



# Monthly Safeguarding Report

Safeguarding Team

Report Period: February 2021  
Date of Report: March 2021

## Contents

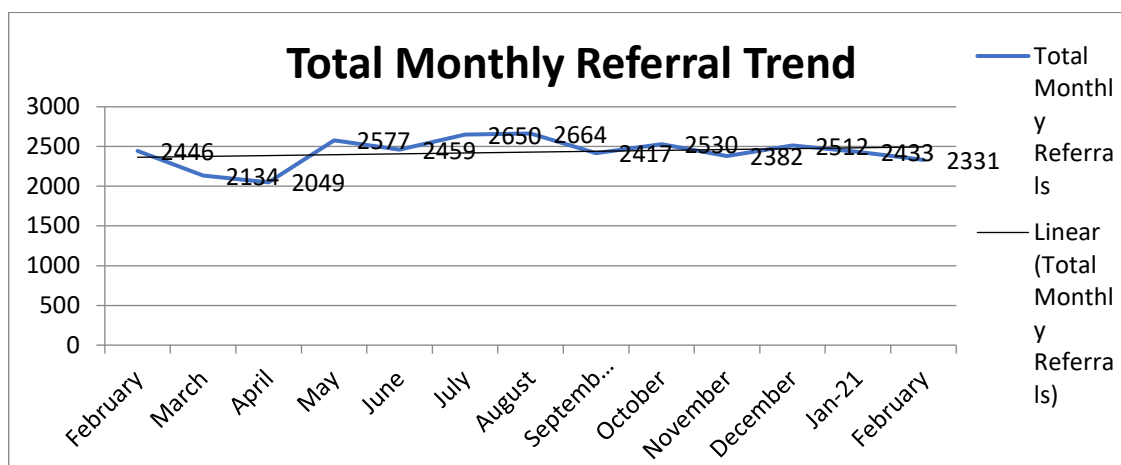
- Summary [Page 3](#)
- Overall Trust Safeguarding Statistics [Page 4](#)
- Audit results [Page 6](#)
- Average SPOC Case Entry Time [Page 11](#)
- SCR/DHR/SAR's [Page 11](#)
- Safeguarding Supervision [Page 12](#)
- Feedback information [Page 12](#)
- RFI & CDOP [Page 13](#)
- Categories of Abuse [Page 13](#)
- Incidents [Page 15](#)
- Frequently Referred [Page 16](#)
- Area & STP Analysis- Detailed referrals & feedback [Page 17](#)

## Summary

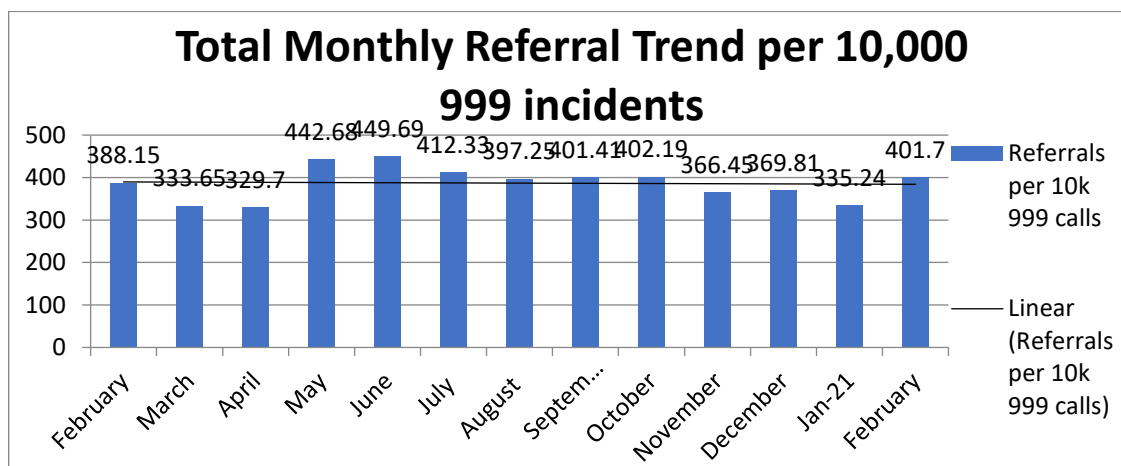
- Safeguarding referrals in February 2021 have decreased to 2331, a 4.93% annual decrease and a 4.37% decrease from the previous month. We are seeing the improved question sets help streamline the referral process and referrals will be sent to the most appropriate service.
- Trust referrals per 10,000 999 incidents increased to 401.70, an annual increase of 15.82% and an increase of 16.5% on the previous month.
- SPOC Case Entry Time decreased at 10.37 minutes per referral.
- The total active amount of Serious Case reviews to date at the end of February has increased to 20, with 7 new cases and 22 closed. The team have worked on lowering this figure and closed inactive cases.
- Compliance for Safeguarding Supervision for managers within EEAST who hold a safeguarding portfolio has increased to 0%. The Safeguarding team are at 63% The Team are working towards an amended list for people receiving supervision.
- 1 feedback email has been provided to staff on referrals during this month, this is due to time restraints as new staff are being trained
- Requests for information has decreased to 66 in February 2021.
- DATIX Safeguarding incidents decreased to 62. Patient Experiences logged in February decreased to 7
- People who have been frequently referred 3 or more times has decreased to 25.

## Overall Trust Safeguarding Statistics

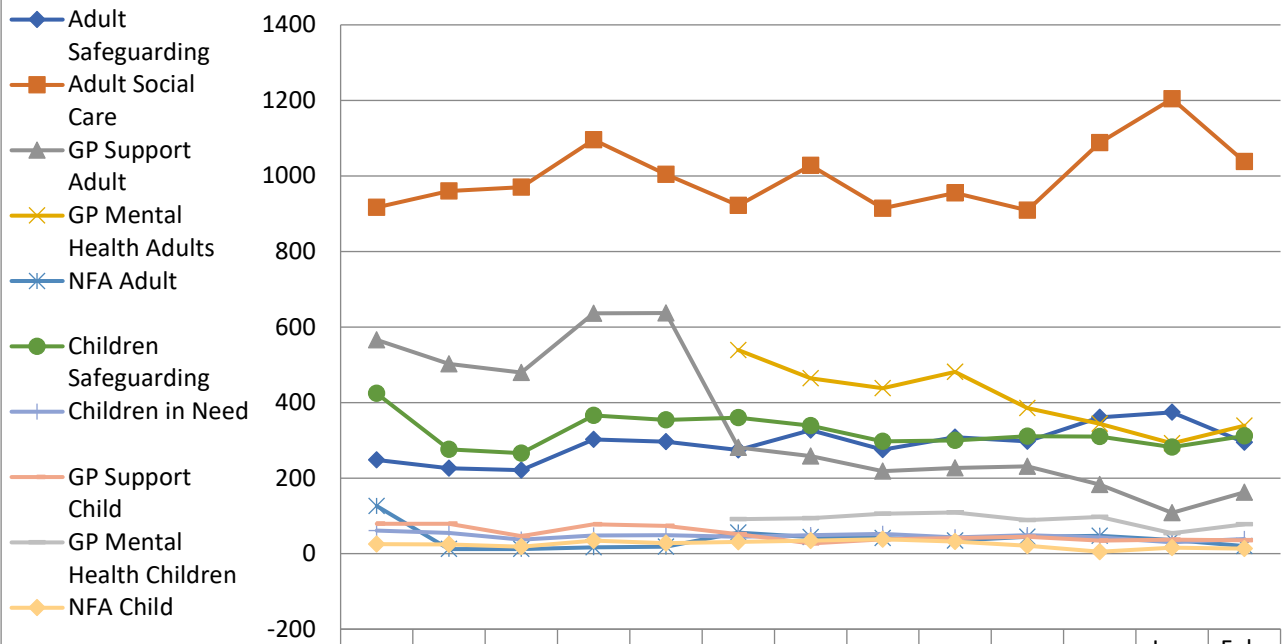
- 2331 Social Care referrals were made as a Trust in February 2021. An annual decrease of 4.93% and a decrease of 4.37% on the previous month.



- Referrals per 10,000 999 calls in February 2021 were 401.70, an annual increase of 15.82% and a monthly increase of 16.5% on the previous month.



## Total referrals by Case Type Trend

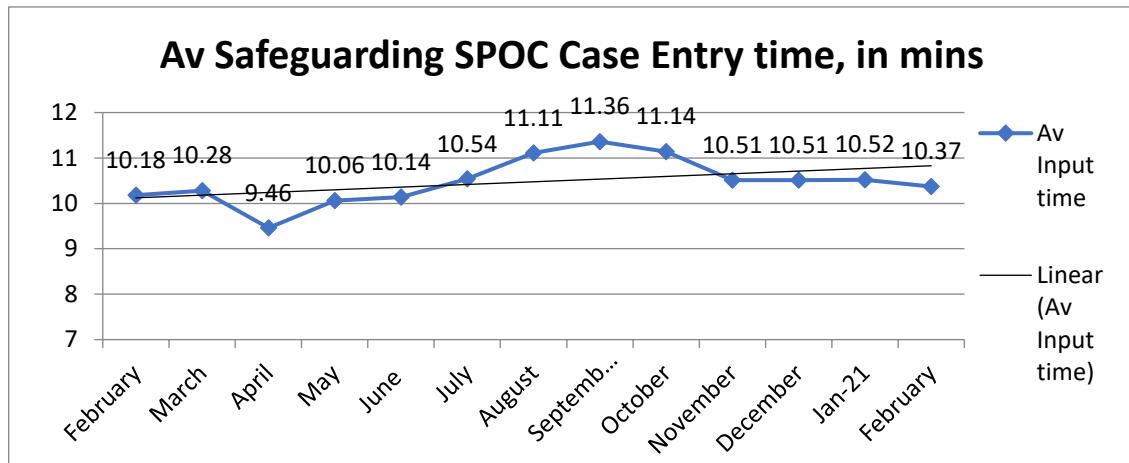


	Feb	Mar	Apr	May	June	July	Aug	Sep	Oct	Nov	Dec	Jan-21	Feb-21
Adult Safeguarding	248	226	221	302	296	274	327	275	308	297	361	374	295
Adult Social Care	917	960	970	1096	1004	922	1028	914	955	909	1088	1204	1038
GP Support Adult	566	502	479	636	637	281	258	218	227	231	183	108	162
GP Mental Health Adults						539	464	438	481	385	344	292	339
NFA Adult	126	12	12	17	18	56	44	41	34	45	47	36	20
Children Safeguarding	424	276	266	366	354	360	339	297	300	311	310	282	312
Children in Need	61	55	37	48	49	45	49	52	43	49	43	30	39
GP Support Child	79	79	46	78	73	51	27	38	41	45	34	37	35
GP Mental Health Children						91	94	106	109	89	97	54	78
NFA Child	25	24	18	34	28	31	34	38	32	21	5	16	13

## Average SPOC Case Entry Time

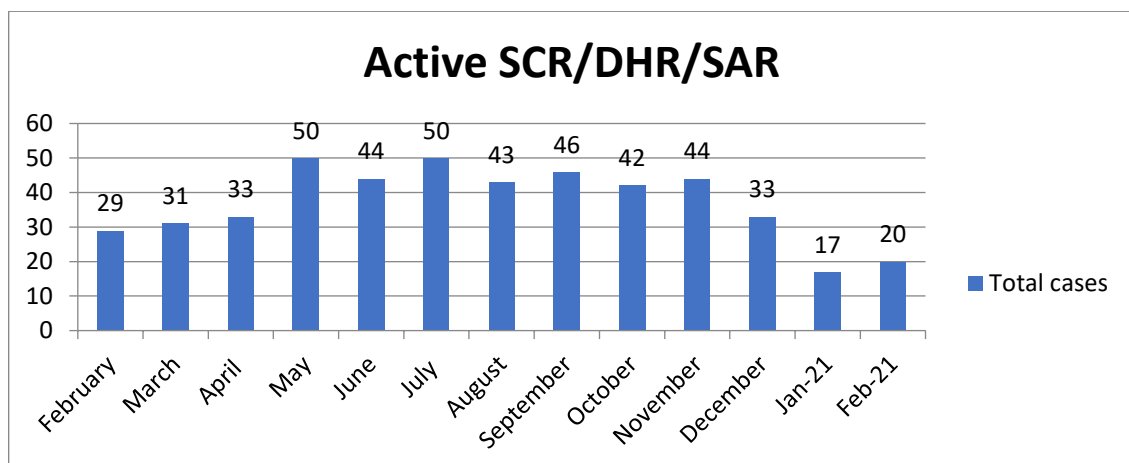
The SPOC Call Centre monitor call statistical information for all the services they provide. The Safeguarding Team requested the average call length of each Safeguarding referral call made by clinicians into the call centre.

SPOC have been able to provide the average time taken to log each referral from the start to finish time recorded on Adastra as a representation of the average time taken to complete each referral.



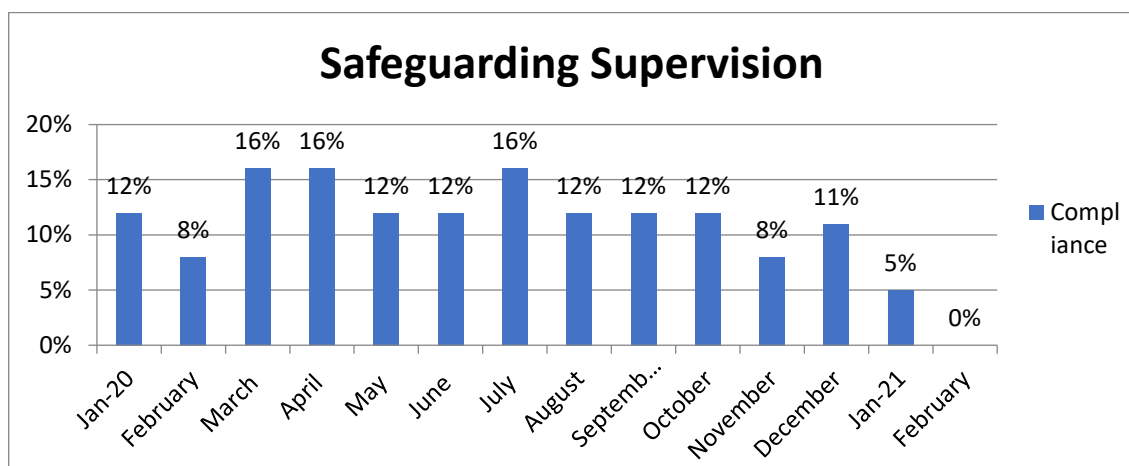
## SCR/DHR/SAR's

The below represents the current amount of active Serious Case Reviews (SCR)/Domestic Homicide Reviews (DHR) and Serious Adults Reviews (SAR), either at stage of scoping or submitted Chronology, draft or submitted Independent Management Review or outstanding recommendations for completion, up to the end of this month. 7 new Case Review notifications were received in February 2021, with 4 cases being closed.



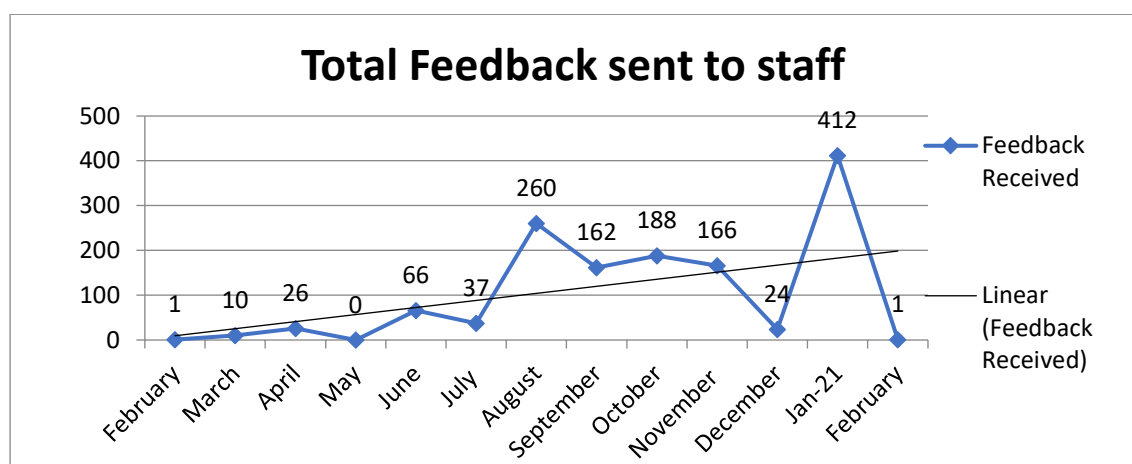
## Safeguarding Supervision

The below represents the 0% of nominated Safeguarding Lead's, Trust Board, Managers and Area Clinical Leads who have had documented Safeguarding Supervision within the last 6 months. There are now 19 identified personnel which require Supervision by the Safeguarding Lead, Named Professional, Safeguarding specialist for Adults & Named Doctor for Safeguarding. This list will be revisited with amendments made in line with the new operations structure.



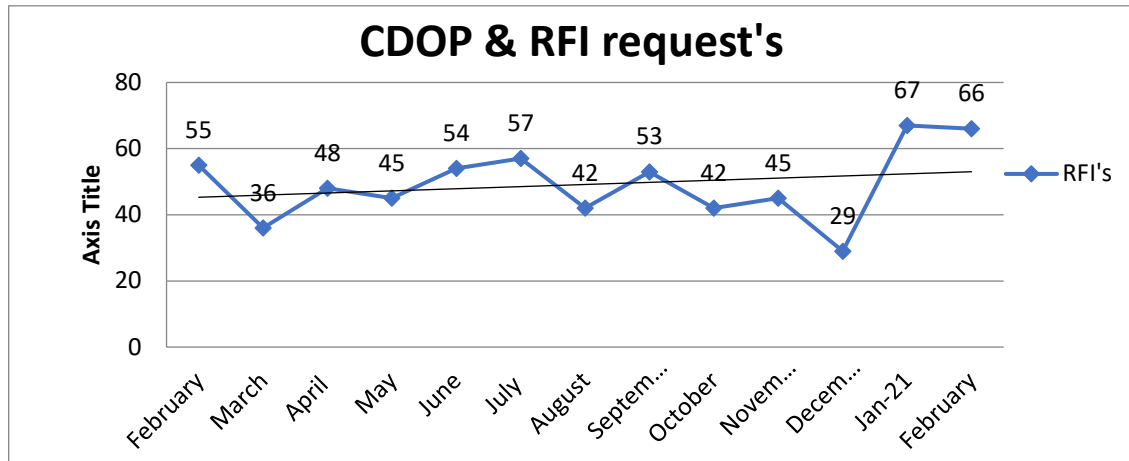
## Overall Trust Feedback for all Safeguarding Referrals

In February 2021, 1 of 2433 feedback was sent out by the safeguarding team. This is due to capacity within the team and ongoing operational pressures.



## RFI's and CDOP Requests

- The below represents the amount of information which was requested from the Safeguarding team from external organisations, excluding Serious Case/Adult or Domestic Homicide reviews.





## Categories of Abuse

- The below details the total categories of abuse for all Safeguarding Adult & Child referrals, to show the reasoning for the Trust's Safeguarding concerns, followed by a breakdown per locality for last month.

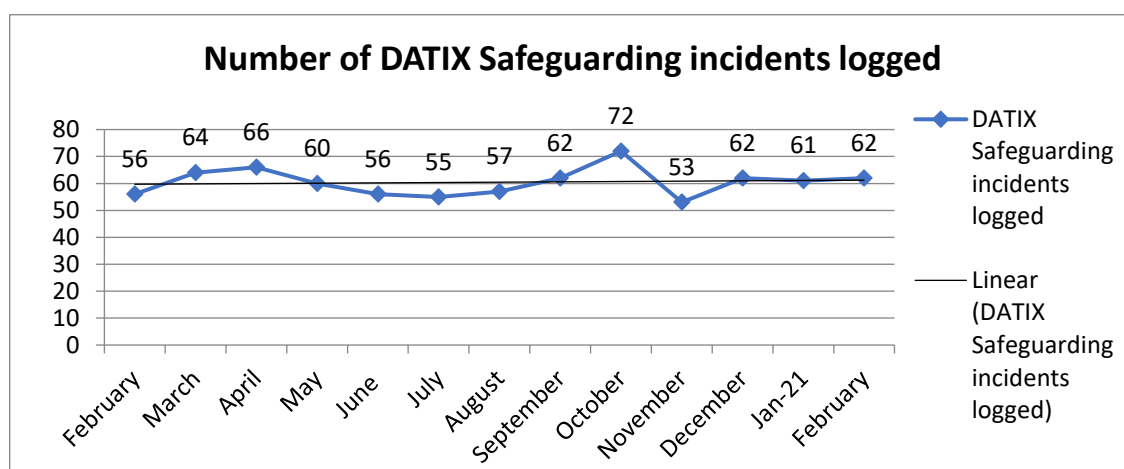
What is the suspected type of abuse?	September 2020		October 2020		November 2020		December 20		January 2021		February 2021	
	Child	Adult	Child	Adult	Child	Adult	Child	Adult	Child	Adult	Child	Adult
Adult conveyed - no care for children	1	0	3	0	0	0	3	0	0	0	1	0
Child Death	1	0	0	0	0	0	3	0	1	0	1	0
Child Exploitation	1	0	0	0	0	0	3	0	0	0	0	0
Child Sexual Exploitation	4	0	4	0	5	0	0	0	1	0	0	0
Concealed pregnancy	1	0	0	0	2	0	0	0	1	0	1	0
Discriminatory	-	-	-	-	-	-	-	-	0	0	0	0
Domestic Abuse/Violence	41	16	21	18	29	19	51	22	30	14	27	19
Emotional	13	0	22	0	15	0	20	0	9	0	14	0
Emotional/ Psychological	0	28	0	28	0	16	0	25	0	10	0	9
Fabricated or Induced Illness	1	0	1	0	0	0	1	0	0	0	0	0
Financial or Material	0	0	-	-	0	4	0	19	0	21	0	15
FGM	0	1	0	0	0	0	0	0	0	0	0	0
Forced Marriage	-	-	-	-	-	-	-	-	0	0	0	0
Human Trafficking	1	0	0	0	3	0	4	0	1	0	6	0
Institutional/Organisational	0	40	0	63	0	47	0	44	0	65	0	38
Modern Slavery	-	-	-	-	-	-	-	-	-	-	0	0
Neglect	-	-	-	-	-	-	-	-	-	-	54	0
Neglect by others	15	116	0	118	0	135	0	121	0	164	0	127
Neglect of home	9	69	11	51	9	43	13	69	16	63	8	73
No adult acting in the best interests of the child	11	-	13	0	18	0	20	0	13	0	10	0
Parent Taking Drugs and/or Alcohol	45	-	33	0	42	0	40	0	38	0	47	0
Parents – Overdose/ Suicidal/ Mental Health	125	-	94	0	119	0	109	0	95	0	118	0
Physical	12	18	13	17	13	13	14	16	10	21	17	13
Refusal of Medical Treatment for Child	2	0	1	0	2	0	3	0	6	0	4	0
Sexual	8	6	3	4	6	5	3	3	5	2	2	0
Sudden death of adult/ carer	2	0	1	0	3	0	3	0	1	0	2	0
Violent Extremism	0	0	0	0	0	1	0	0	0	1	-	1

## Adult and Child Referrals by Sector

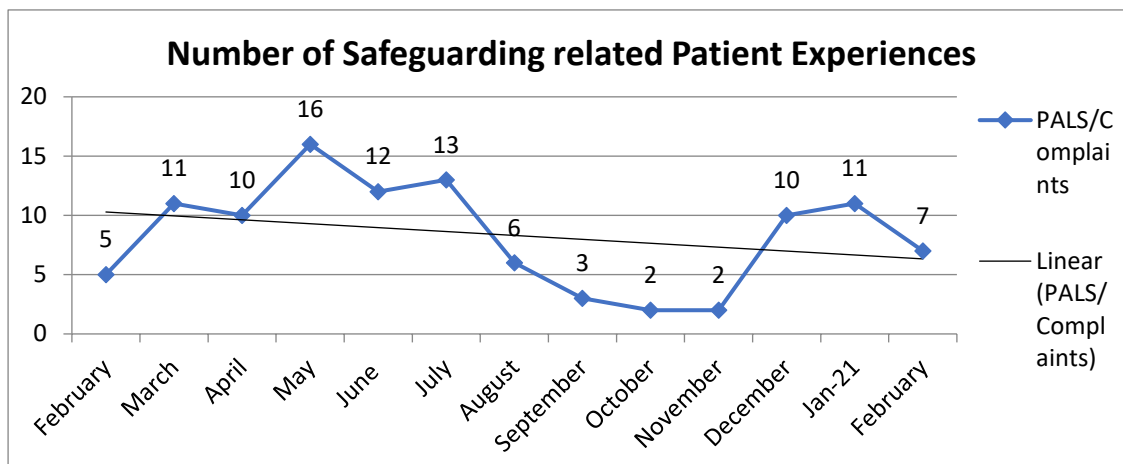
Suspected Type of Abuse	Beds			Herts			Cams			Essex			Norfolk			Suffolk			Misc.			Month Totals		
	Adult	Child	Beds Total	Adult	Child	Herts Total	Adult	Child	Cams Total	Adult	Child	Essex Total	Adult	Child	Norfolk Total	Adult	Child	Suffolk Total	Adult	Child	Misc. Total	Total Child	Total Adult	Total Per Month
Adult conveyed - no care for children	0	0	0	0	0	0	0	0	0	0	0	0	1	1	0	0	0	0	0	0	0	1	0	1
Child Death	0	0	0	0	0	0	0	1	1	0	0	0	0	0	0	0	0	0	0	0	0	1	0	1
Child Exploitation	0	0	0	0	0	0	0	0	0	0	0	0	0	0	0	0	0	0	0	0	0	0	0	0
Child Sexual Exploitation	0	0	0	0	0	0	0	0	0	0	0	0	0	0	0	0	0	0	0	0	0	0	0	0
Concealed Pregnancy	0	0	0	0	0	0	0	0	0	0	0	0	1	1	0	0	0	0	0	0	0	1	0	1
Discriminatory	0	0	0	0	0	0	0	0	0	0	0	0	0	0	0	0	0	0	0	0	0	0	0	0
Domestic Abuse	0	2	2	3	4	7	2	5	7	6	10	16	5	3	8	3	3	6	0	0	0	27	19	46
Emotional	0	1	1	0	4	4	0	2	2	0	4	4	0	1	1	0	2	2	0	0	0	14	0	14
Emotional/ Psychological	1	0	1	2	0	2	2	0	2	2	0	2	1	0	1	1	0	1	0	0	0	0	0	9
Fabricated or Induced Illness	0	0	0	0	0	0	0	0	0	0	0	0	0	0	0	0	0	0	0	0	0	0	0	0
Financial Or Material	0	0	0	0	0	0	4	0	4	8	0	8	1	0	1	2	0	2	0	0	0	0	15	15
Female Genital Mutilation	0	0	0	0	0	0	0	0	0	0	0	0	0	0	0	0	0	0	0	0	0	0	0	0
Forced Marriage	0	0	0	0	0	0	0	0	0	0	0	0	0	0	0	0	0	0	0	0	0	0	0	0
Human Trafficking	0	0	0	0	2	2	0	3	3	0	1	1	0	0	0	0	0	0	0	0	0	6	0	6
Institutional/Organisational	2	0	2	10	0	10	5	0	5	10	0	10	6	0	6	5	0	5	0	0	0	0	38	38
Modern Slavery	0	0	0	0	0	0	0	0	0	0	0	0	0	0	0	0	0	0	0	0	0	0	0	0
Neglect	0	6	6	0	7	7	0	8	8	0	18	18	0	7	7	0	8	8	0	0	0	54	0	54
Neglect By Others	12	0	12	26	0	26	25	0	25	27	0	27	20	0	20	17	0	17	0	0	0	0	127	127
Neglect Of Home	5	0	5	11	3	14	6	1	7	28	2	30	16	2	18	7	0	7	0	0	0	8	73	81
No adult acting in the best interests of the child	0	3	3	0	0	0	0	0	0	0	3	3	0	3	3	0	1	1	0	0	0	10	0	10
Parent Taking Drugs And/Or Alcohol	0	6	6	0	6	6	0	9	9	0	9	9	0	8	8	0	9	9	0	0	0	47	0	47
Parents - Overdose/ Suicidal/ Mental Health	0	8	8	0	20	20	0	11	11	0	37	37	0	18	18	0	24	24	0	0	0	118	0	118
Physical	2	3	5	3	0	3	0	2	2	5	9	14	1	2	3	2	1	3	0	0	0	17	13	30
Refusal Of Medical Treatment For Child	0	0	0	0	1	1	0	1	1	0	2	2	0	0	0	0	0	0	0	0	0	4	0	4
Sexual	0	0	0	0	0	0	1	1	0	0	0	0	1	1	0	0	0	0	0	0	0	2	0	2
Sudden death of parent/ carer	0	0	0	0	0	0	0	2	2	0	0	0	0	0	0	0	0	0	0	0	0	2	0	2
Violent Extremism	0	0	0	1	0	1	0	0	0	0	0	0	0	0	0	0	0	0	0	0	0	0	1	1
<b>Total</b>	<b>22</b>	<b>29</b>	<b>51</b>	<b>56</b>	<b>47</b>	<b>103</b>	<b>44</b>	<b>46</b>	<b>90</b>	<b>86</b>	<b>95</b>	<b>181</b>	<b>50</b>	<b>47</b>	<b>97</b>	<b>37</b>	<b>48</b>	<b>85</b>	<b>0</b>	<b>0</b>	<b>0</b>	<b>312</b>	<b>295</b>	<b>607</b>

## Incidents

- 62 Safeguarding related DATIX incidents were logged in the month of February 2021. Previous month's figures have also been updated.

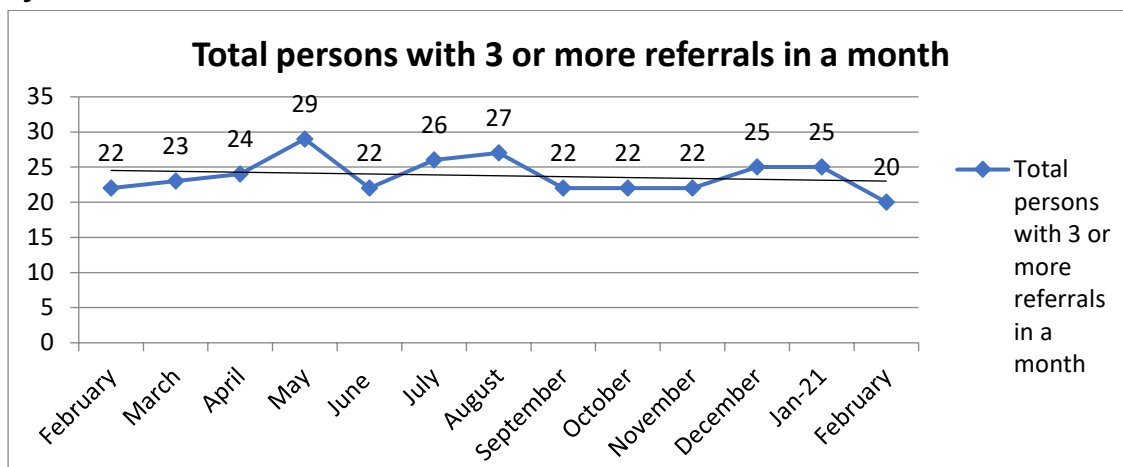


- 7 Patient Experience's had been logged where Safeguarding was highlighted as a concern. Previous month's figures have also been updated.

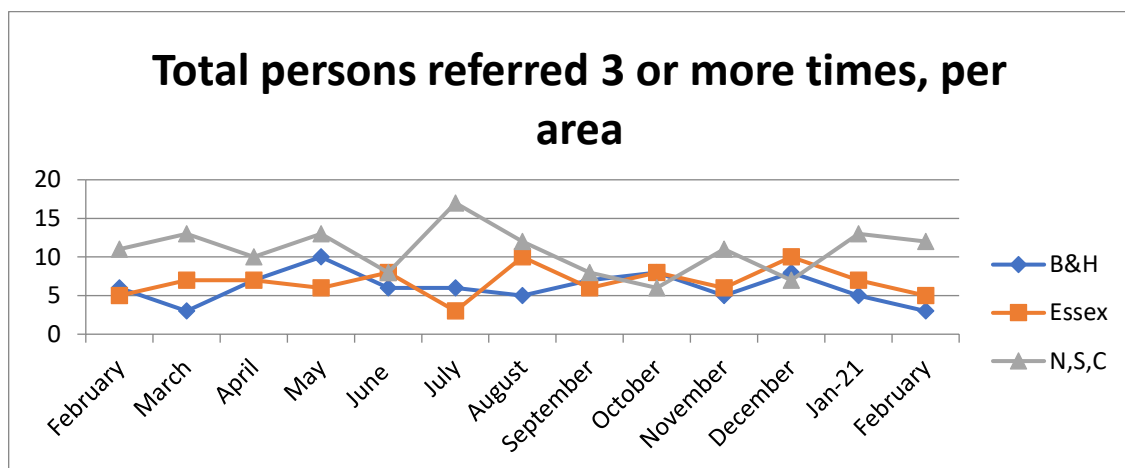


## Frequently Referred

- The Safeguarding Team obtain a monthly report on how many patients are referred 3 or more times in a month, from the Adastra system.

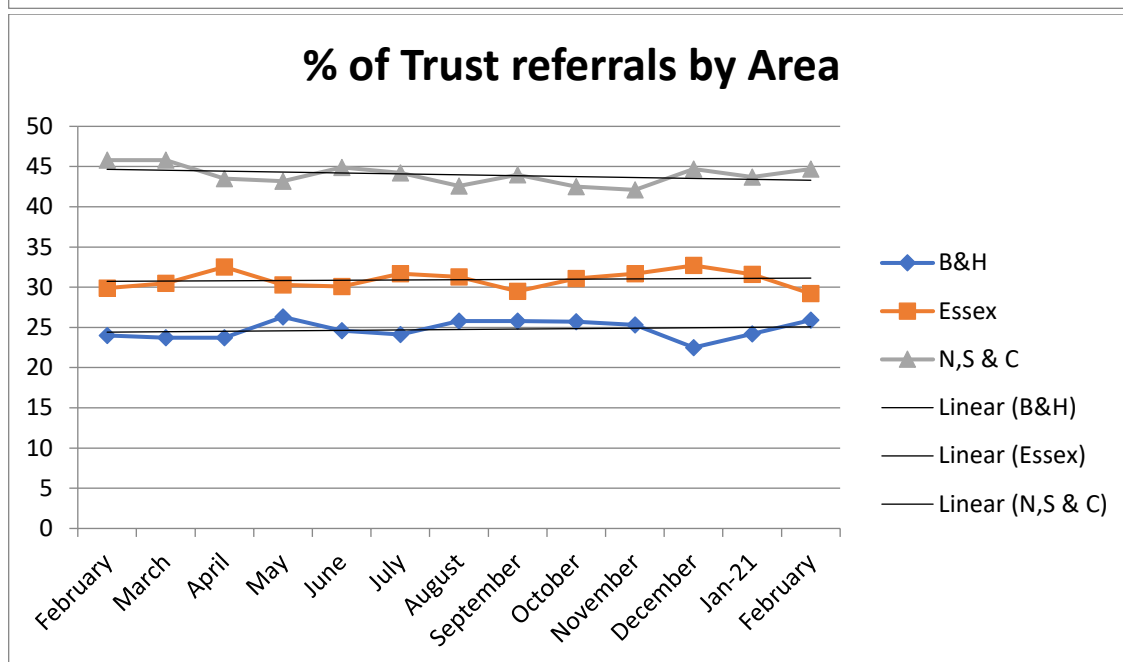
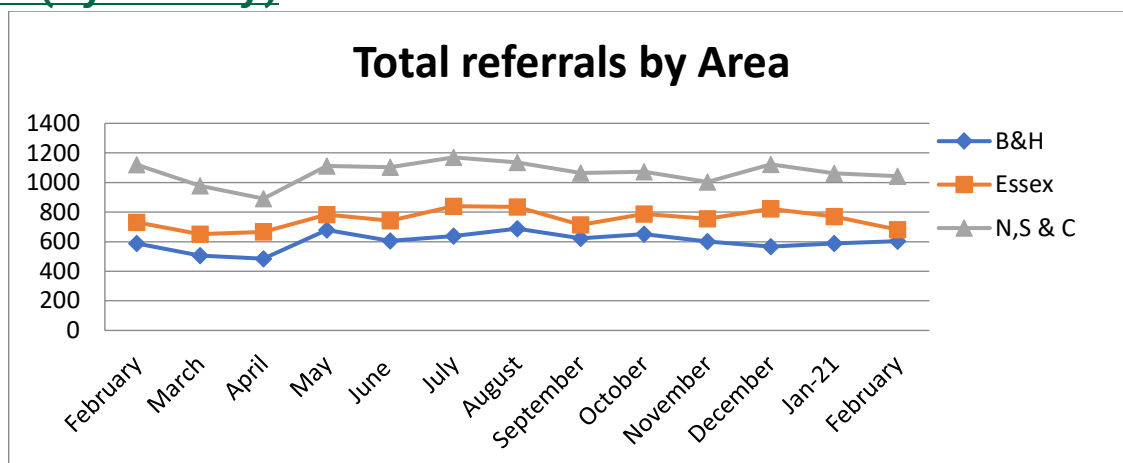


➤



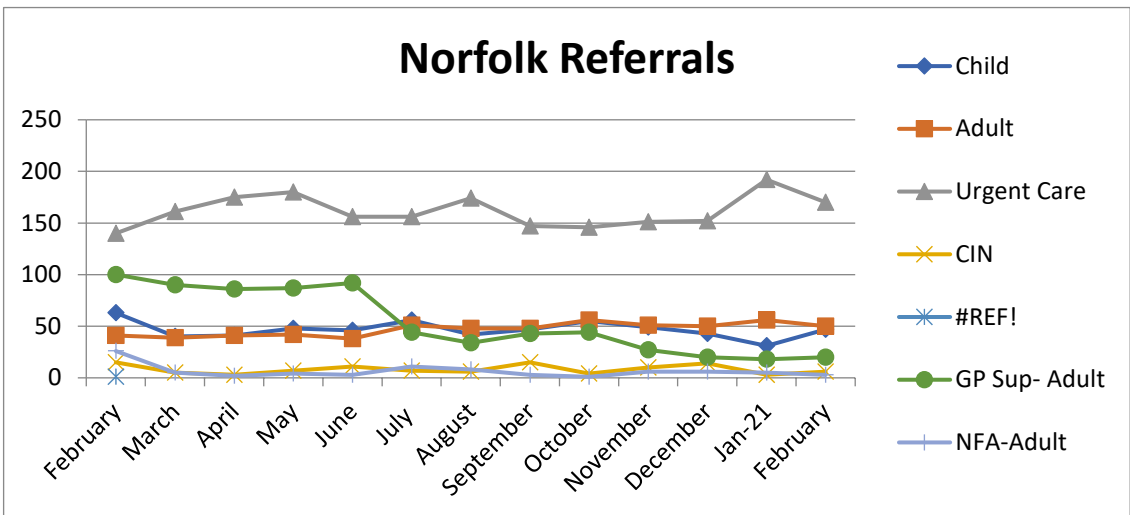
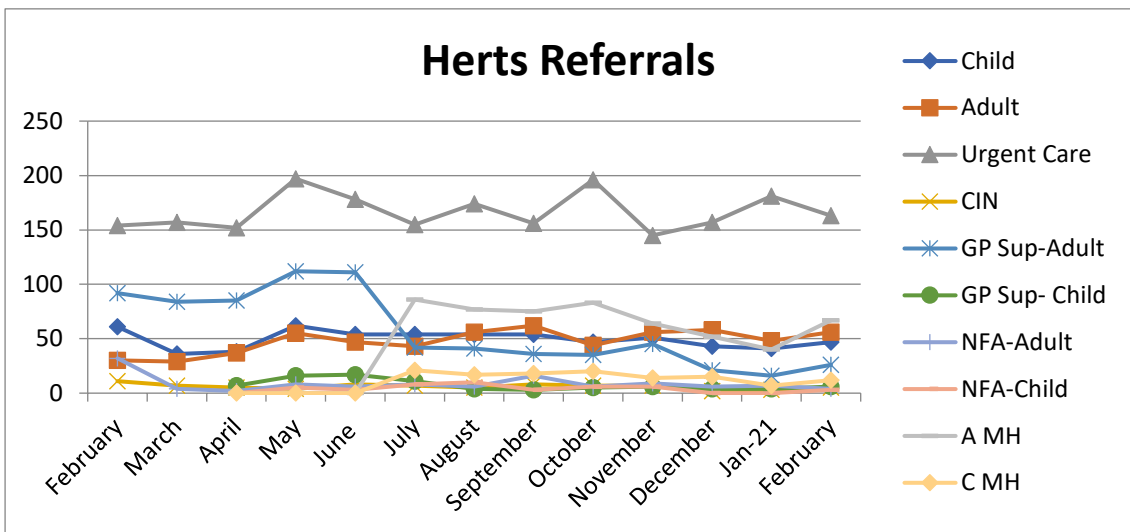
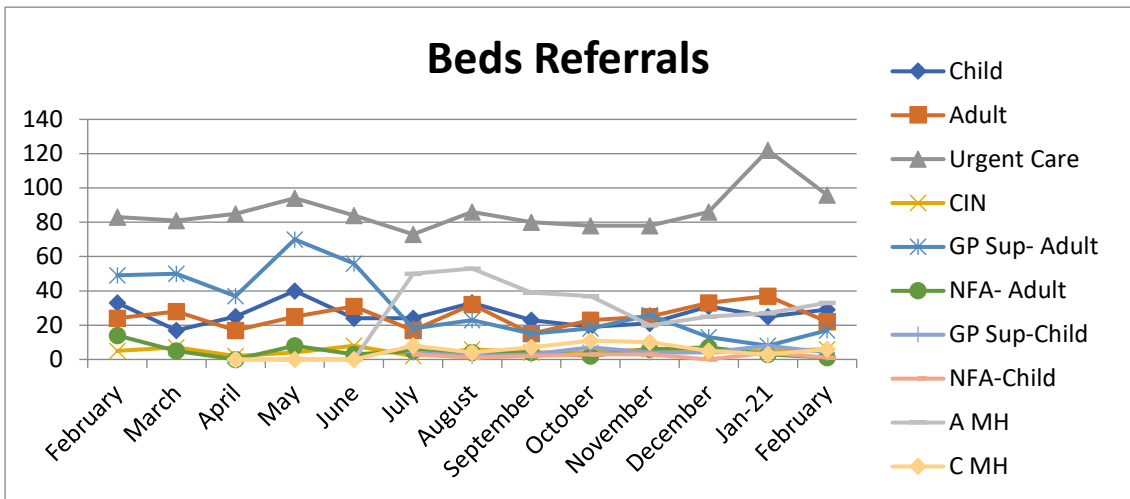
## Area & STP Information

### Area (by County)

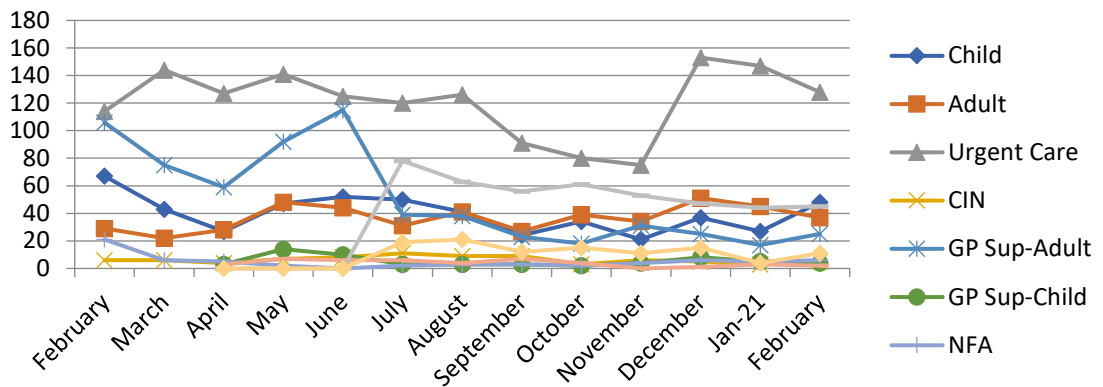


- The below table is a breakdown of referrals by area by Children & Adult, for information only.

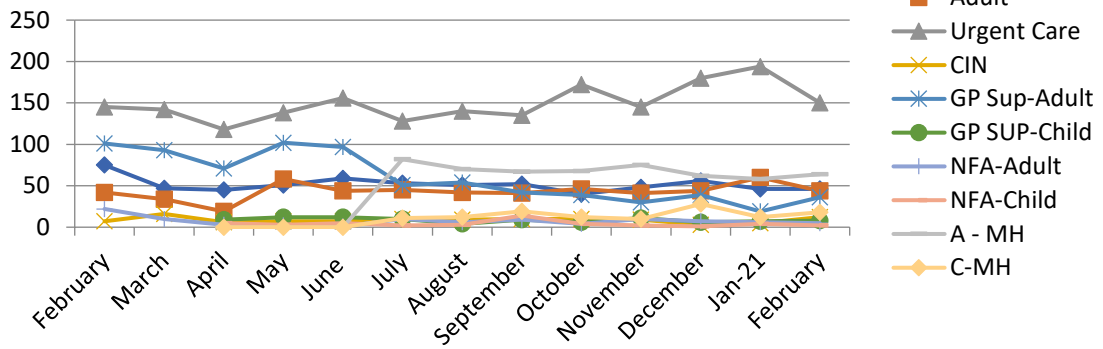
Month/Area Totals	Feb 20	Mar 20	Apr 20	May 20	Jun 20	Jul 20	Aug 20	Sep 20	Oct 20	Nov 20	Dec 20	Jan 21	Feb 21
<b>Beds</b>	208	188	166	241	201	204	244	192	202	199	208	242	215
<b>Herts</b>	380	317	319	438	404	435	444	431	449	403	358	347	389
<b>Cambs</b>	392	342	276	373	381	402	391	398	401	381	426	411	385
<b>Norfolk</b>	385	340	359	381	363	409	395	411	415	384	348	352	347
<b>Suffolk</b>	343	296	256	358	360	359	349	255	258	239	348	300	311
<b>Essex</b>	731	651	666	782	741	840	834	714	787	754	821	769	681



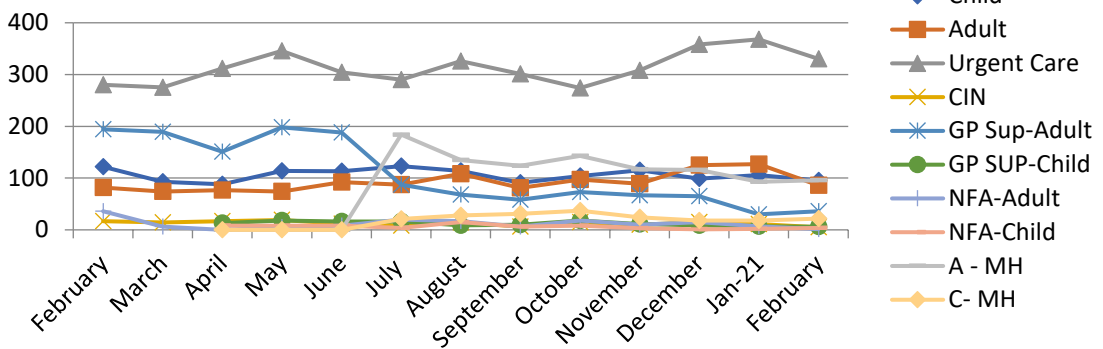
### Suffolk Referrals



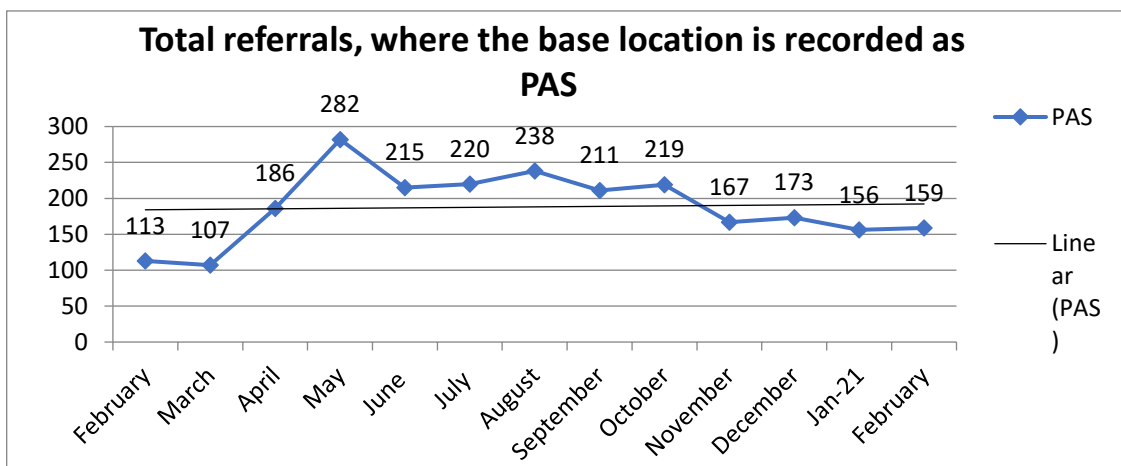
### Cambs Referrals



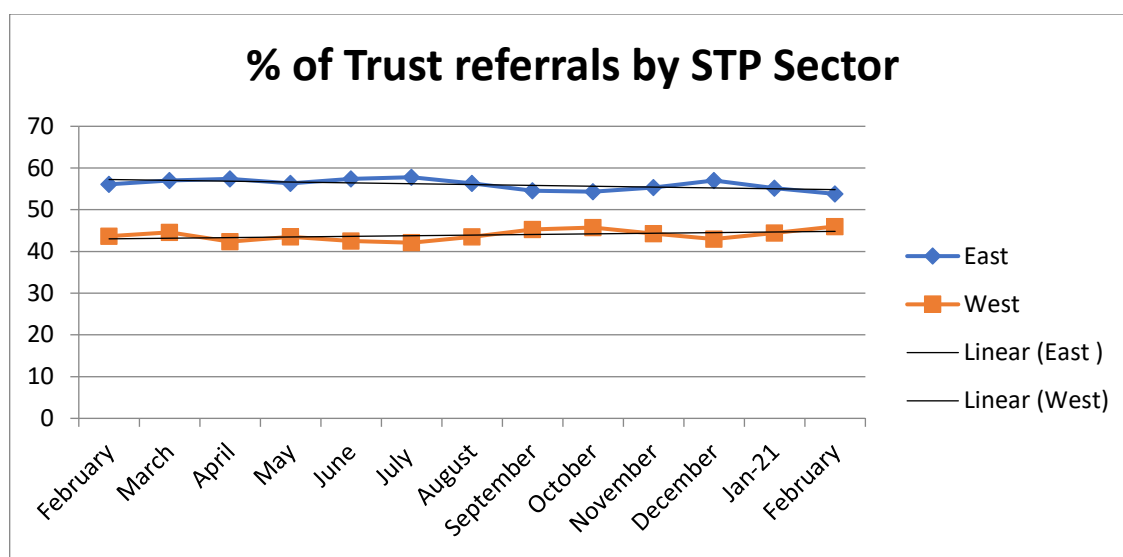
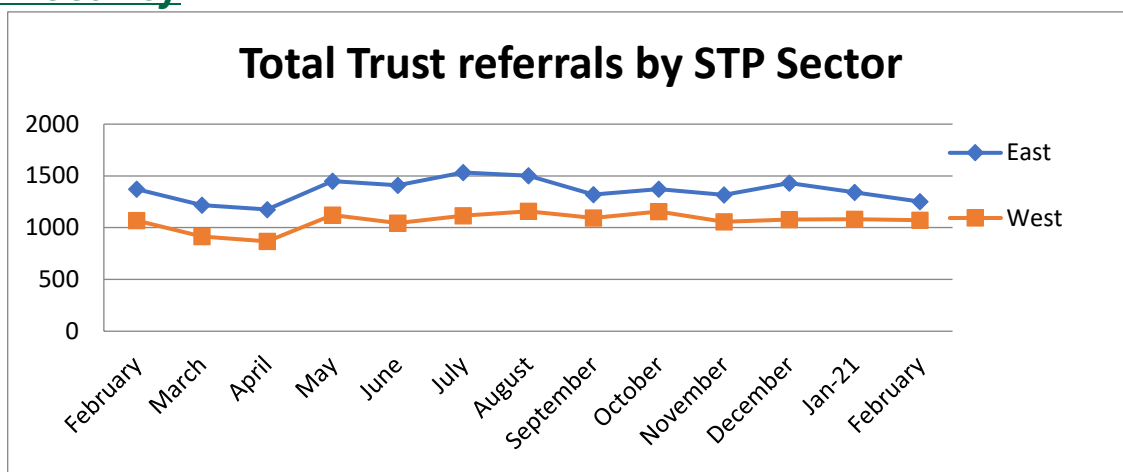
### Essex Referrals



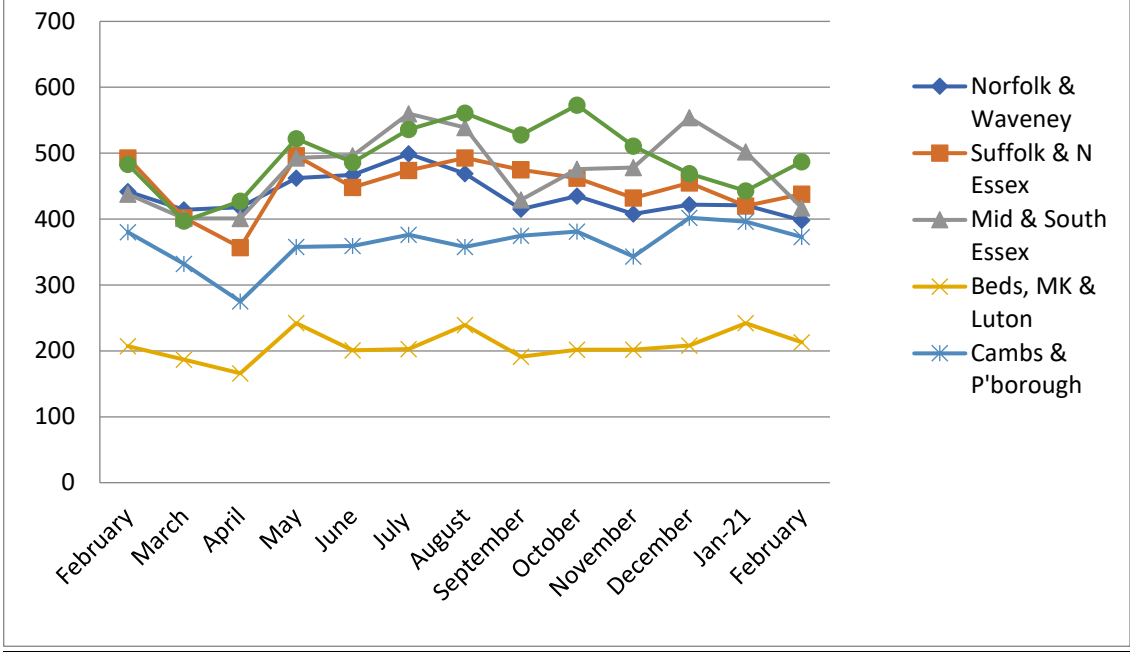
The Safeguarding team collate information on Private Ambulance Services, from the Base Station location provided on the referral. The accuracy of the information is subject to human error, due to inaccuracies with reporting referrer's base location.



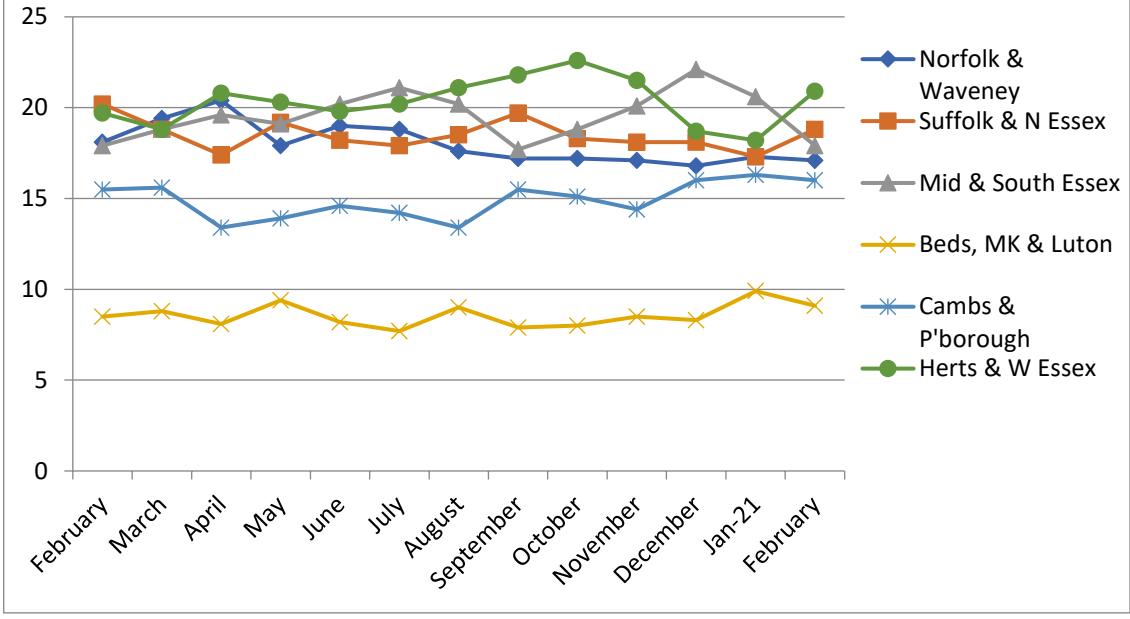
## STP Locality



### Total Trust referrals by STP Area



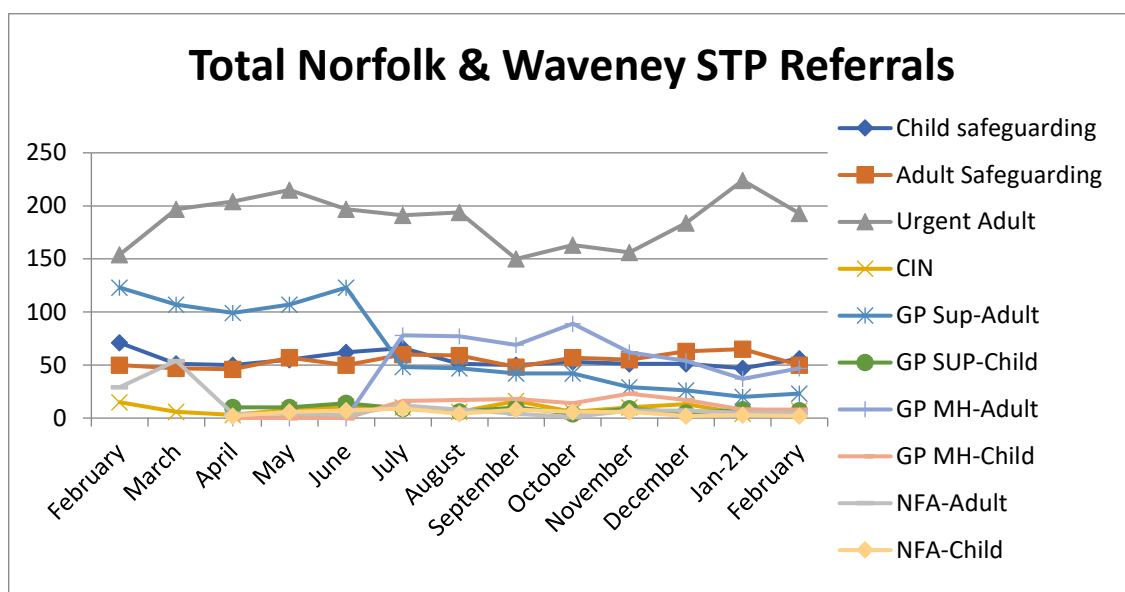
### % of Trust referrals by STP Area



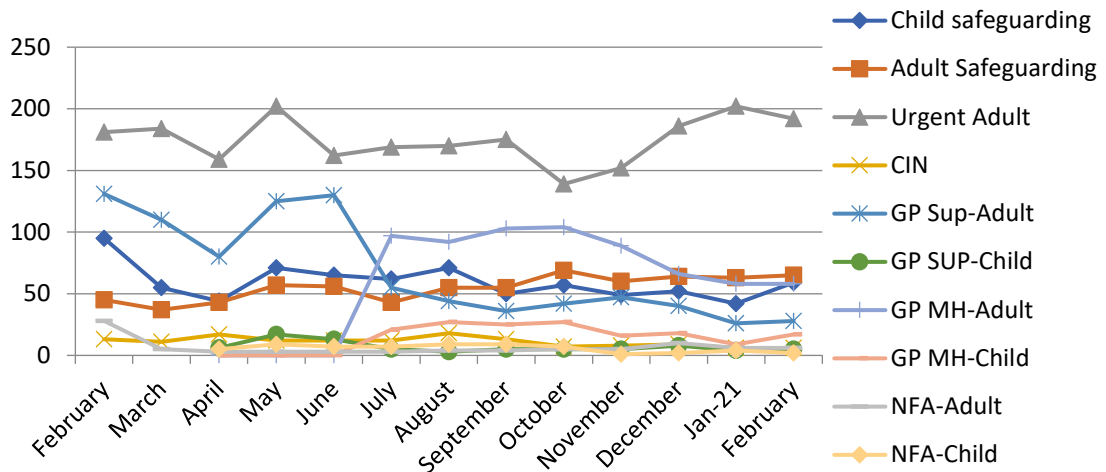


➤ The below table is a breakdown of referrals by STP area by Children & Adult.

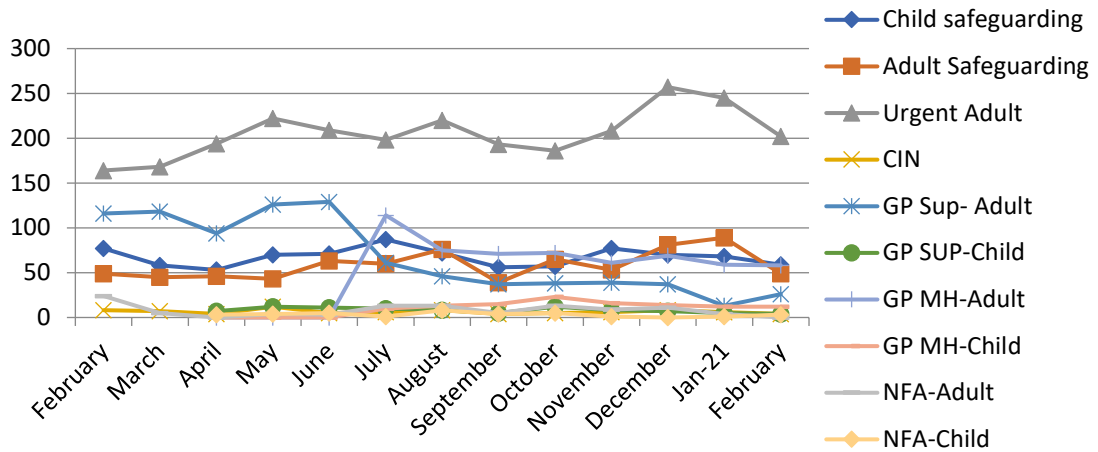
Month/Area Totals		Feb 20	Mar 20	Apr 20	May 20	Jun 20	Jul 20	Aug 20	Sep 20	Oct 20	Nov 20	Dec 20	Jan 21	Feb 21
EAST	Norfolk & Waveney	442	414	418	462	467	499	469	415	435	408	422	421	398
	Suffolk & North Essex	493	402	357	496	448	474	493	475	462	432	455	420	438
	Mid & South Essex	438	401	401	493	496	560	539	429	476	478	554	502	417
WEST	MK, Beds & Luton	207	187	166	242	201	203	239	191	202	202	208	242	213
	Cambs & P 'Borough	380	332	275	358	359	376	358	375	381	343	402	396	373
	Herts & West Essex	483	397	427	522	486	536	561	528	573	511	469	443	487



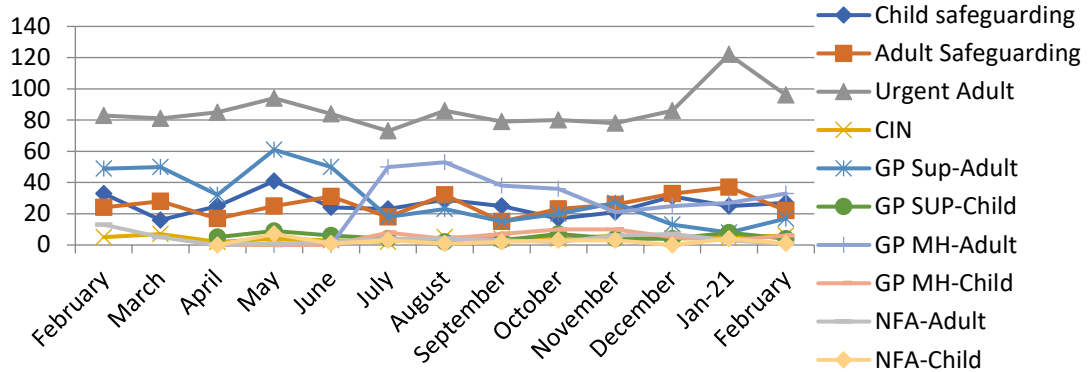
### Total Suffolk & N Essex STP Referrals

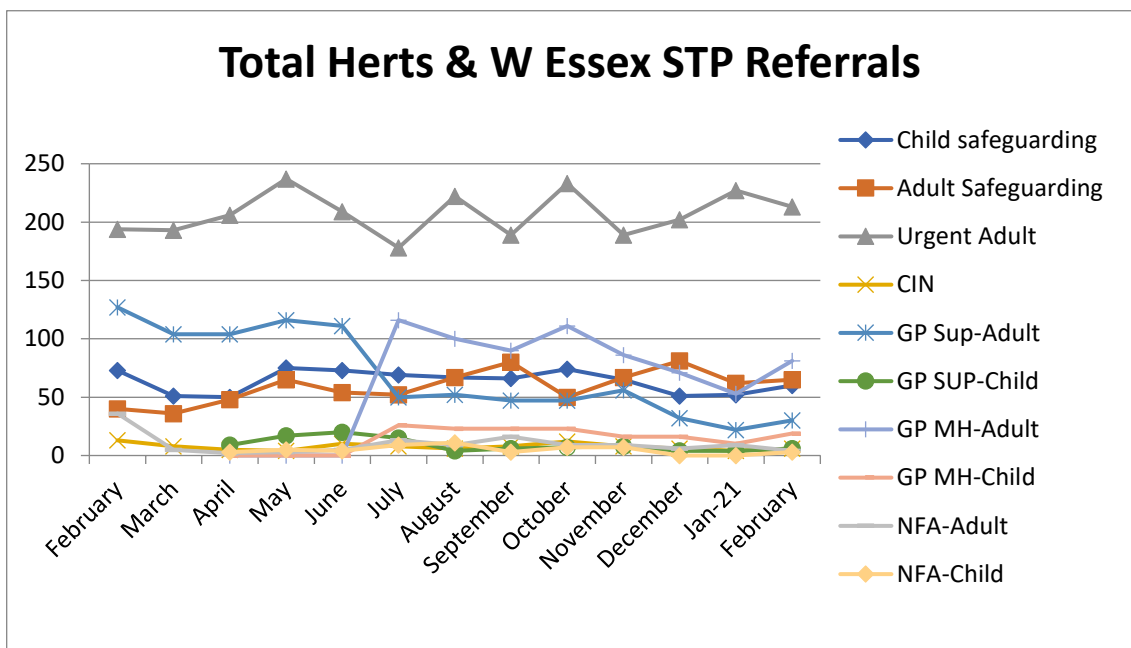
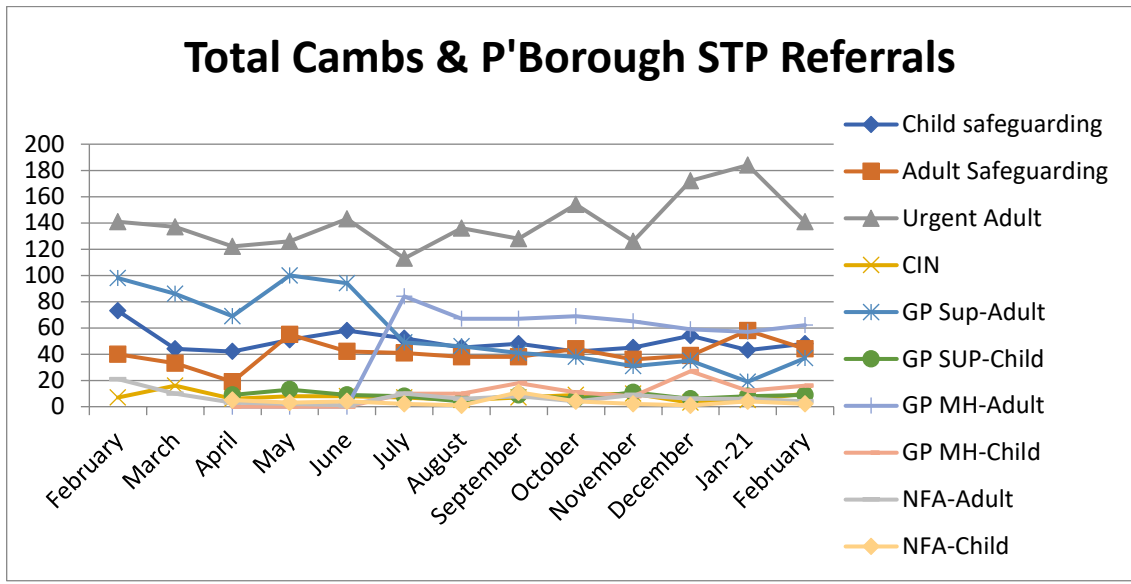


### Total Mid & South Essex STP Referrals



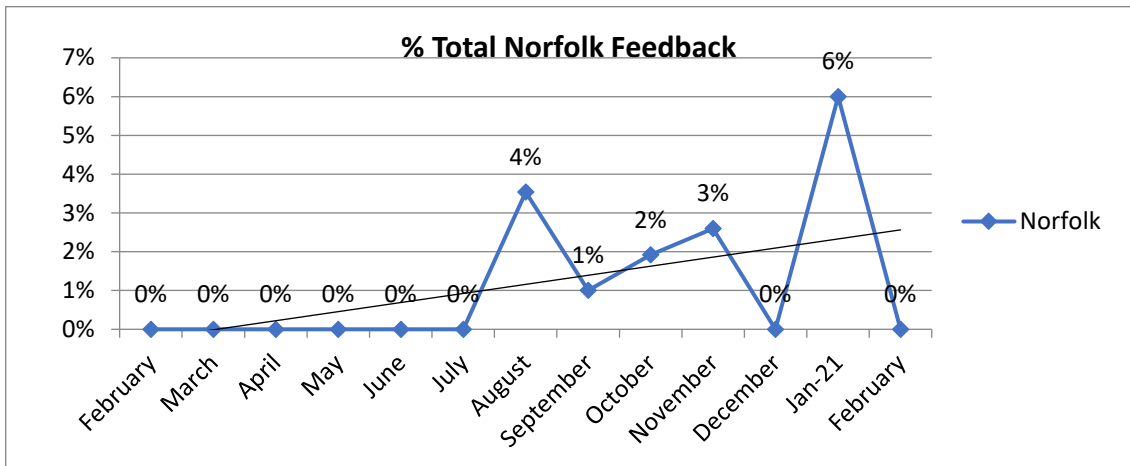
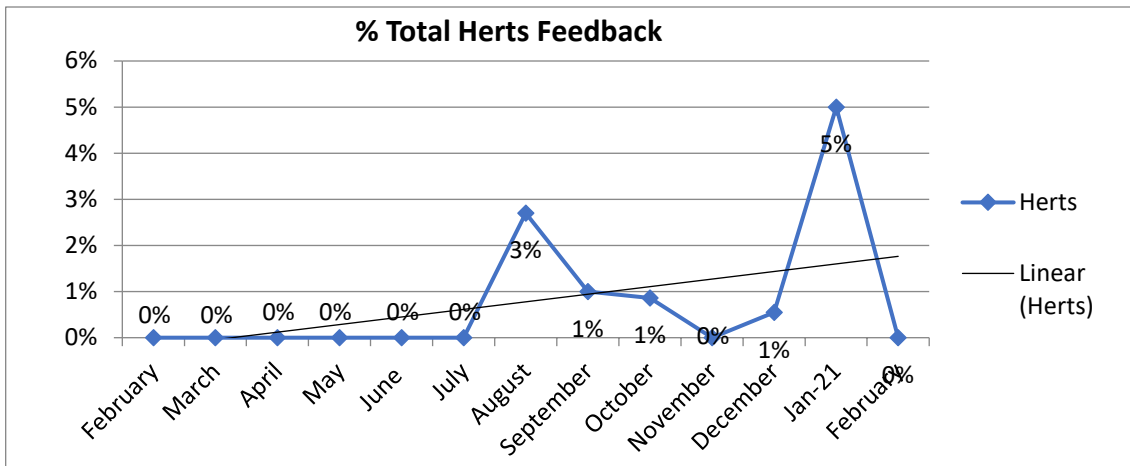
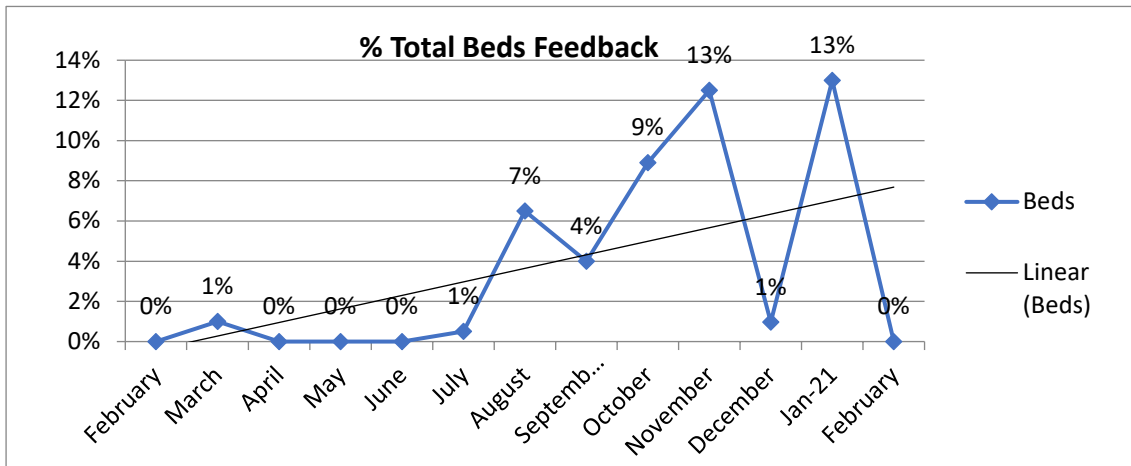
### Total MK, Beds & Luton STP Referrals

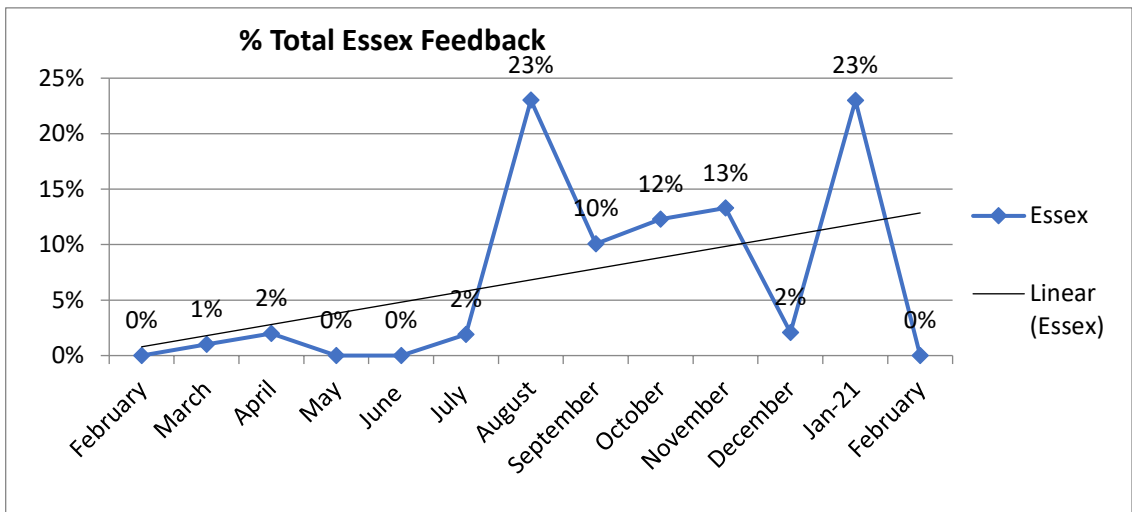
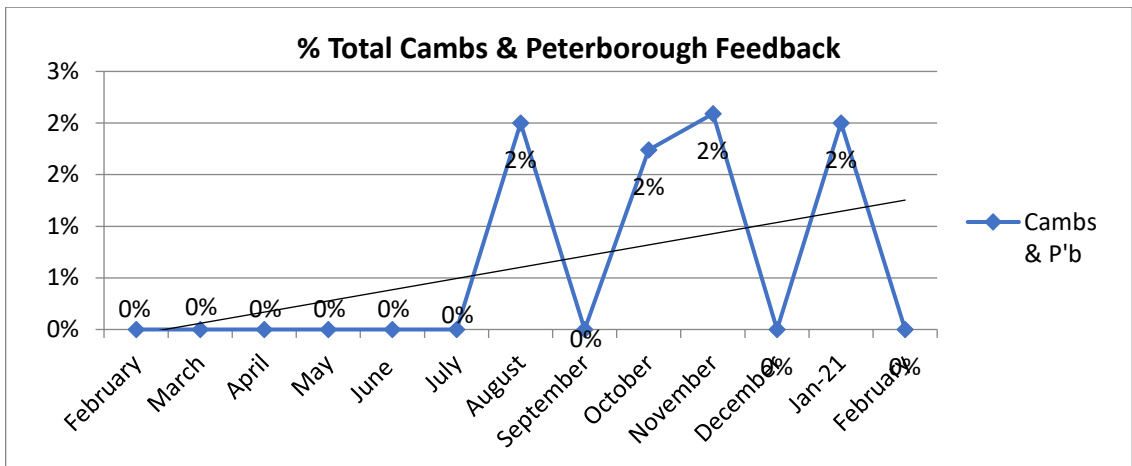
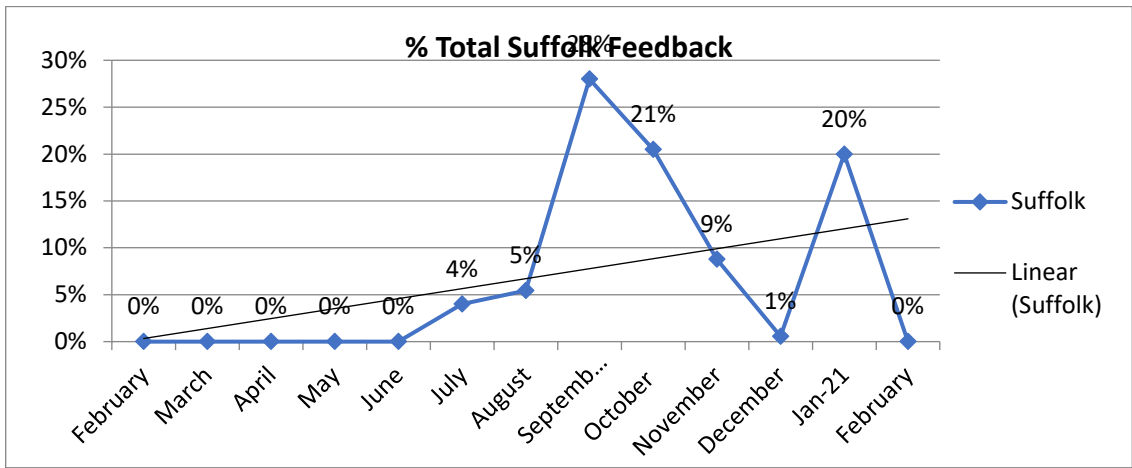


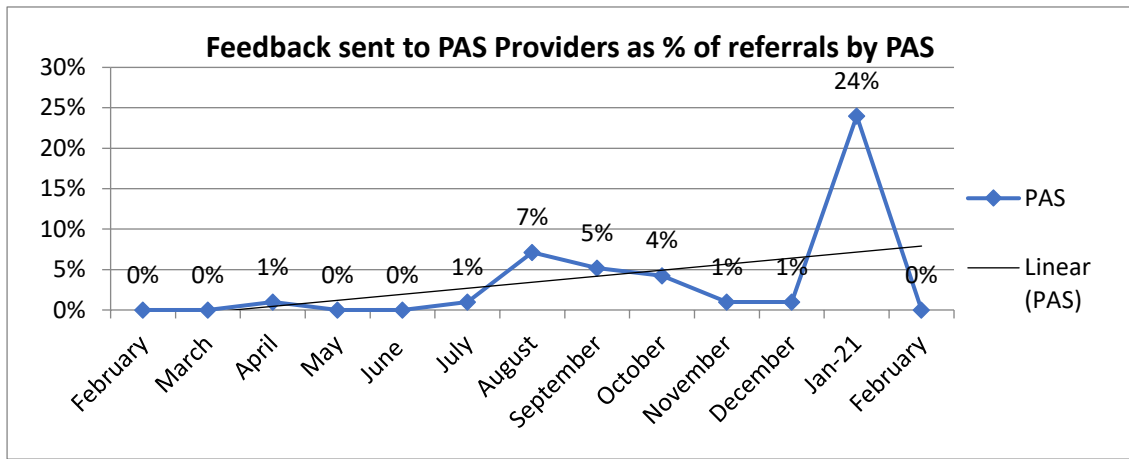


## Feedback

- The below represents the amount of feedback sent out to staff/volunteers in Sector area from both GP and LA's.







Author: Angela Jones

Date: March 2021