



# Monthly Safeguarding Report

Safeguarding Team

Report Period: June 2021  
Date of Report: July 2021

## Contents

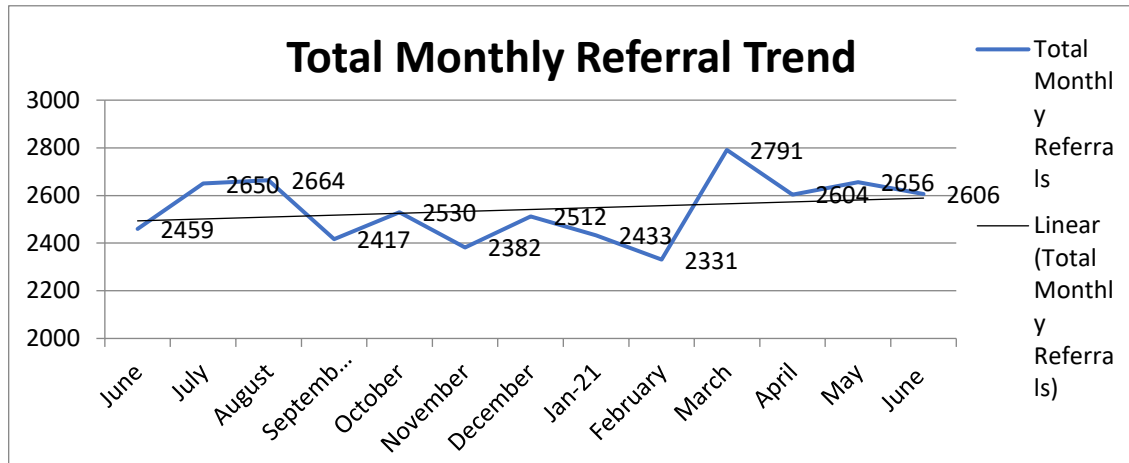
- Summary [Page 3](#)
- Overall Trust Safeguarding Statistics [Page 4](#)
- Audit results [Page 6](#)
- Average SPOC Case Entry Time [Page 11](#)
- SCR/DHR/SAR's [Page 11](#)
- Safeguarding Supervision [Page 12](#)
- Feedback information [Page 12](#)
- RFI & CDOP [Page 13](#)
- Categories of Abuse [Page 13](#)
- Incidents [Page 15](#)
- Frequently Referred [Page 16](#)
- Area & STP Analysis- Detailed referrals & feedback [Page 17](#)

## Summary

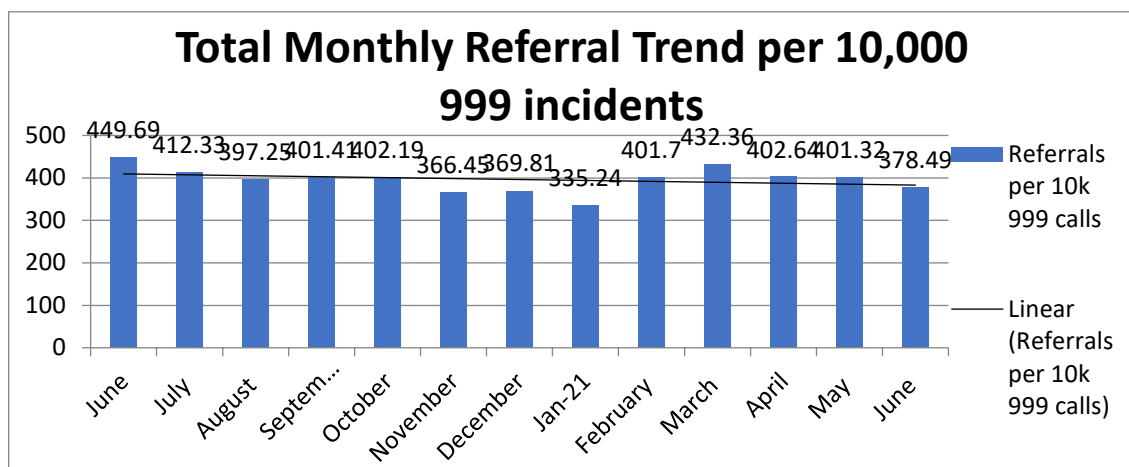
- Safeguarding referrals in June 2021 have increased to 2606, an annual increase of 5.64% and a 1.91% decrease from the previous month. We are seeing the improved question sets help streamline the referral process and referrals will be sent to the most appropriate service.
- Trust referrals per 10,000 999 incidents decreased to 378.39, an annual decrease of 18.8% and a decrease of 6.03% on the previous month.
- SPOC Case Entry Time increased to 11.28 minutes per referral.
- The total active amount of Serious Case reviews to date at the end of June has increased to 36, with 8 new cases and 0 closed. The team will continue working on lowering this figure and closing inactive cases.
- Compliance for Safeguarding Supervision for managers within EEAST who hold a safeguarding portfolio has decreased to 0%. The Safeguarding team are at 63% The Team are working towards an amended list for people receiving supervision.
- 144 feedback email has been provided to staff on referrals during this month.
- Requests for information has increased to 106 in June 2021.
- DATIX Safeguarding incidents decreased to 67. Patient Experiences logged in June increased to 6.
- People who have been frequently referred 3 or more times has increased to 18.

## Overall Trust Safeguarding Statistics

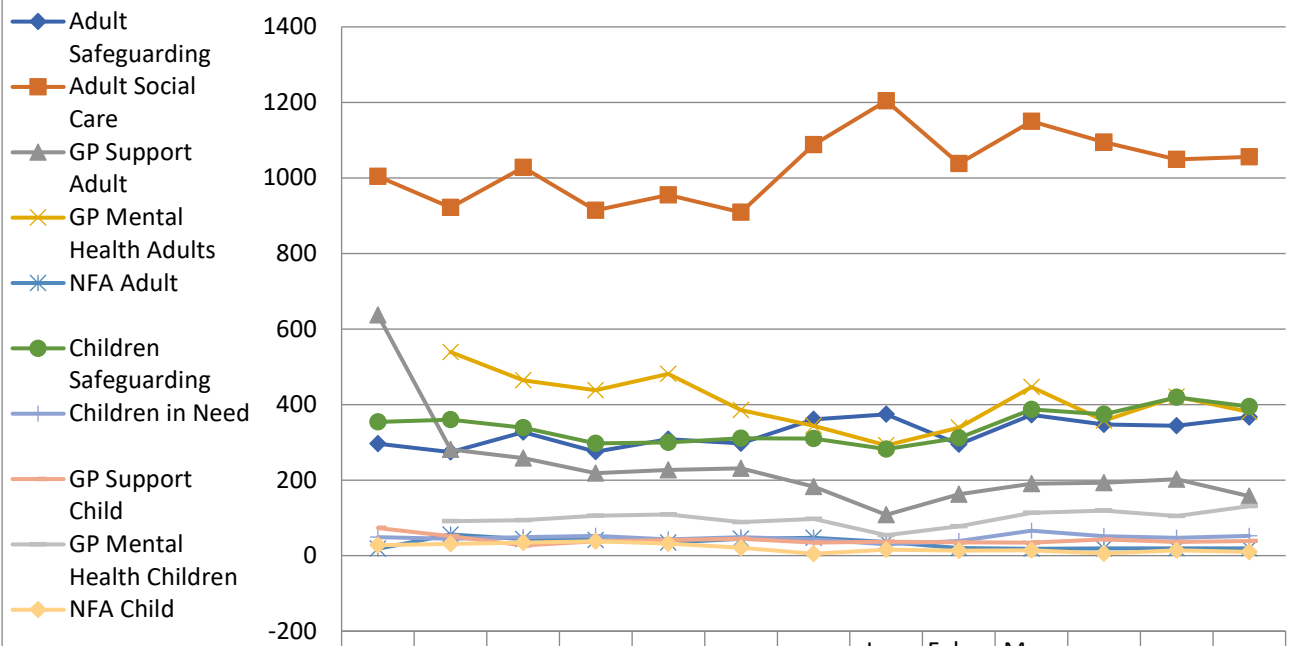
- 2606 Social Care referrals were made as a Trust in June 2021. An annual increase of 5.64% and a decrease of 1.91% on the previous month.



- Referrals per 10,000 999 calls in June 2021 were 378.49, an annual decrease of 18.8% and a monthly decrease of 6.03% on the previous month.



## Total referrals by Case Type Trend

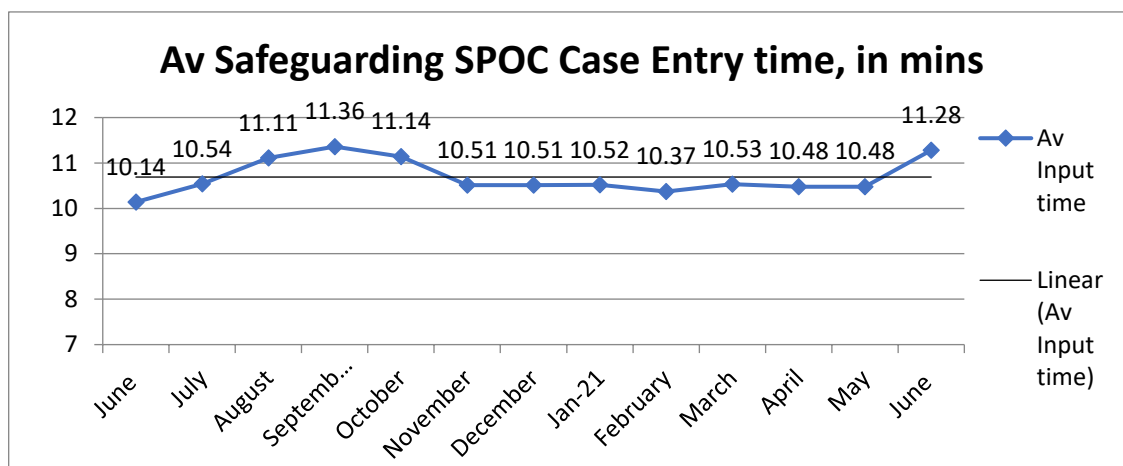


	June	July	Aug	Sep	Oct	Nov	Dec	Jan-21	February	March	April	May	June
Adult Safeguarding	296	274	327	275	308	297	361	374	295	373	347	344	367
Adult Social Care	1004	922	1028	914	955	909	1088	1204	1038	1150	1095	1049	1056
GP Support Adult	637	281	258	218	227	231	183	108	162	190	193	202	157
GP Mental Health Adults		539	464	438	481	385	344	292	339	446	357	421	380
NFA Adult	18	56	44	41	34	45	47	36	20	18	19	19	19
Children Safeguarding	354	360	339	297	300	311	310	282	312	387	374	419	395
Children in Need	49	45	49	52	43	49	43	30	39	66	51	47	52
GP Support Child	73	51	27	38	41	45	34	37	35	34	43	36	39
GP Mental Health Children		91	94	106	109	89	97	54	78	113	119	105	131
NFA Child	28	31	34	38	32	21	5	16	13	14	6	14	10

## Average SPOC Case Entry Time

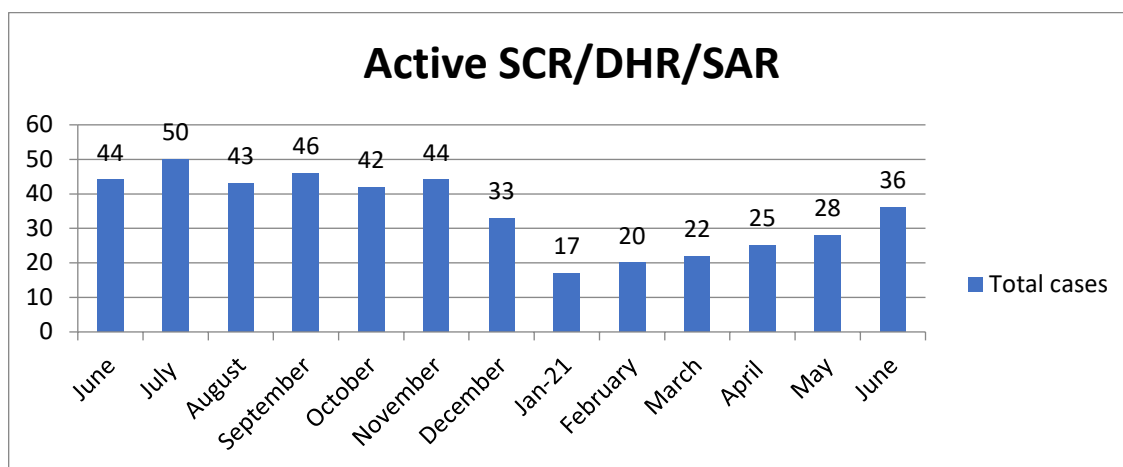
The SPOC Call Centre monitor call statistical information for all the services they provide. The Safeguarding Team requested the average call length of each Safeguarding referral call made by clinicians into the call centre.

SPOC have been able to provide the average time taken to log each referral from the start to finish time recorded on Adastra as a representation of the average time taken to complete each referral.



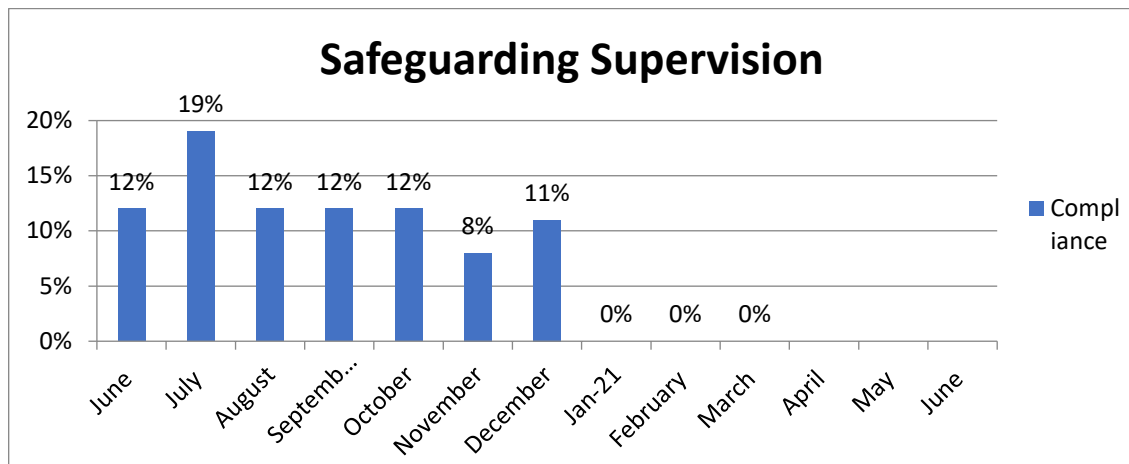
## SCR/DHR/SAR's

The below represents the current amount of active Serious Case Reviews (SCR)/Domestic Homicide Reviews (DHR) and Serious Adults Reviews (SAR), either at stage of scoping or submitted Chronology, draft or submitted Independent Management Review or outstanding recommendations for completion, up to the end of this month. 3 new Case Review notifications were received in May 2021, with 0 cases being closed.



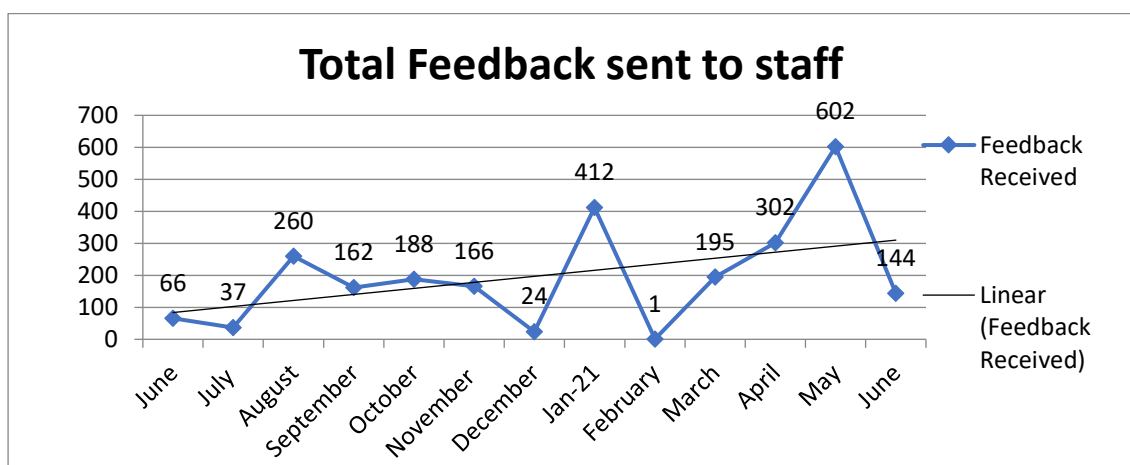
## Safeguarding Supervision

The below represents the 0% of nominated Safeguarding Lead's, Trust Board, Managers and Area Clinical Leads who have had documented Safeguarding Supervision within the last 6 months. There are now 19 identified personnel which require Supervision by the Safeguarding Lead, Named Professional, Safeguarding specialist for Adults & Named Doctor for Safeguarding. This list will be revisited with amendments made in line with the new operations structure.



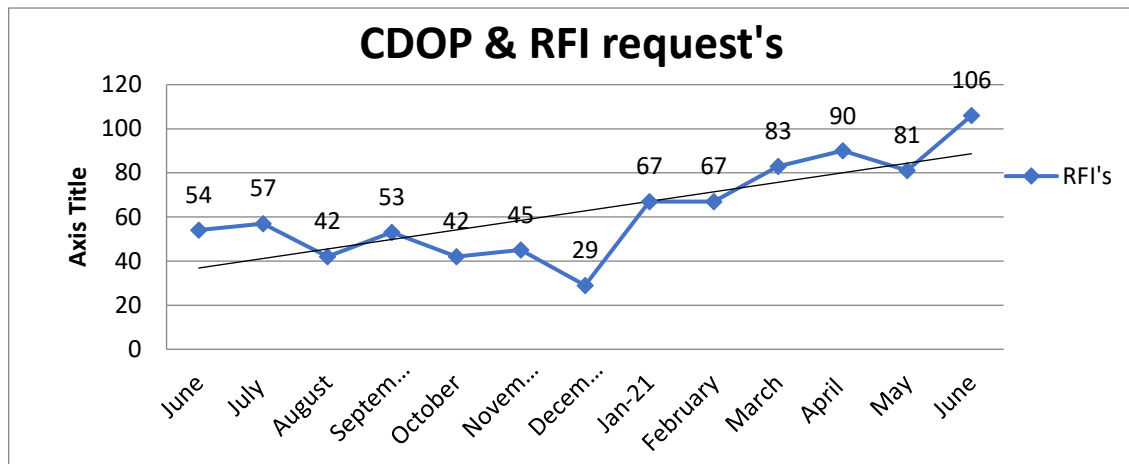
## Overall Trust Feedback for all Safeguarding Referrals

In June 2021, 144 of 2606 feedback was sent out by the safeguarding team. This is due to capacity within the team and ongoing operational pressures.



## RFI's and CDOP Requests

- The below represents the amount of information which was requested from the Safeguarding team from external organisations, excluding Serious Case/Adult or Domestic Homicide reviews.





## Categories of Abuse

- The below details the total categories of abuse for all Safeguarding Adult & Child referrals, to show the reasoning for the Trust's Safeguarding concerns, followed by a breakdown per locality for last month.

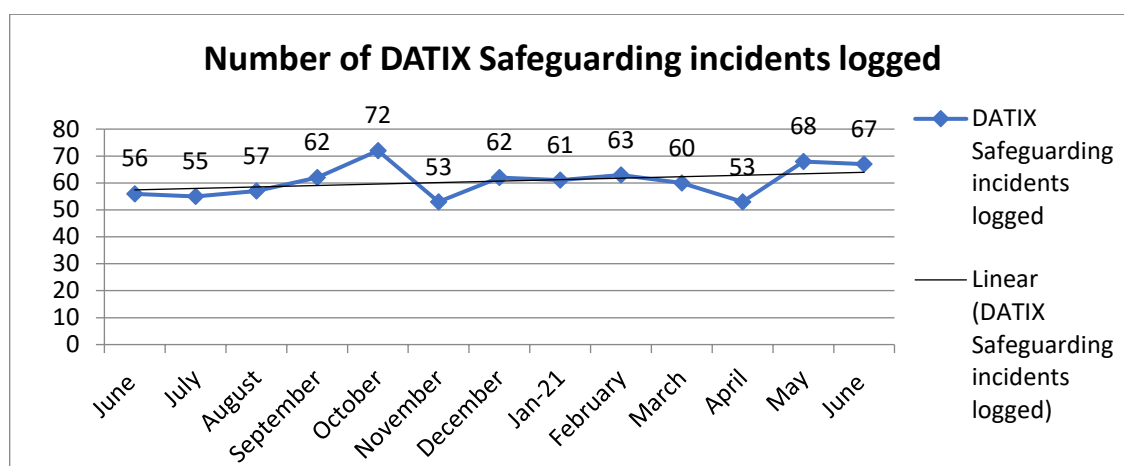
What is the suspected type of abuse?	January 2021		February 2021		March 2021		April 2021		May 2021		June 2021	
	Child	Adult	Child	Adult	Child	Adult	Child	Adult	Child	Adult	Child	Adult
Adult conveyed - no care for children	0	0	1	0	2	0	0	0	3	0	2	0
Child Death	1	0	1	0	3	0	9	0	1	0	9	0
Child Exploitation	0	0	0	0	0	0	1	0	3	0	0	0
Child Sexual Exploitation	1	0	0	0	3	0	4	0	4	0	5	0
Concealed pregnancy	1	0	1	0	1	0	1	0	4	0	0	0
Discriminatory	0	0	0	0	0	0	0	0	0	0	0	0
Domestic Abuse/Violence	30	14	27	19	40	21	30	21	37	22	32	22
Emotional	9	0	14	0	22	0	29	0	15	0	20	0
Emotional/ Psychological	0	10	0	9	0	32	0	30	0	30	0	19
Fabricated or Induced Illness	0	0	0	0	0	0	0	0	0	0	0	0
Financial or Material	0	21	0	15	0	29	0	19	0	17	0	23
FGM	0	0	0	0	0	0	0	0	0	0	0	0
Forced Marriage	0	0	0	0	0	0	0	0	0	0	0	0
Human Trafficking	1	0	6	0	1	2	4	0	0	0	3	0
Institutional/Organisational	0	65	0	38	0	49	0	61	0	51	0	60
Modern Slavery	-	-	0	0	2	3	0	1	0	0	0	0
Neglect	-	-	54	0	81	0	67	0	80	0	87	0
Neglect by others	0	164	0	127	0	129	0	125	0	139	0	140
Neglect of home	16	63	8	73	14	77	7	61	20	63	13	76
No adult acting in the best interests of the child	13	0	10	0	14	0	16	0	12	0	16	0
Parent Taking Drugs and/or Alcohol	38	0	47	0	49	0	36	0	36	0	47	0
Parents – Overdose/ Suicidal/ Mental Health	95	0	118	0	128	0	142	0	165	0	132	0
Physical	10	21	17	13	19	26	17	23	25	17	18	22
Refusal of Medical Treatment for Child	6	0	4	0	1	0	1	0	2	0	1	0
Sexual	5	2	2	0	6	4	6	5	8	5	9	5
Sudden death of adult/ carer	1	0	2	0	1	0	4	0	4	0	1	0
Violent Extremism	0	1	-	1	0	1	0	1	0	0	0	0

## Adult and Child Referrals by Sector

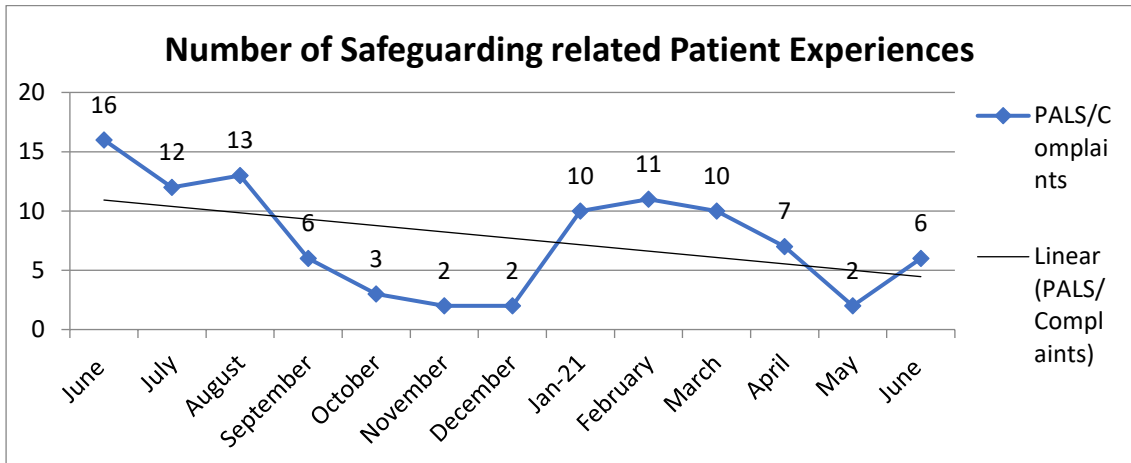
Suspected Type of Abuse	Beds			Herts			Cams			Essex			Norfolk			Suffolk			Misc.			Month Totals		
	Adult	Child	Beds Total	Adult	Child	Herts Total	Adult	Child	Cams Total	Adult	Child	Essex Total	Adult	Child	Norfolk Total	Adult	Child	Suffolk Total	Adult	Child	Misc. Total	Total Child	Total Adult	Total Per Month
Adult conveyed - no care for children	0	1	1	0	0	0	0	0	0	0	0	0	0	0	0	0	1	1	0	0	0	2	0	2
Child Death	0	1	1	0	1	1	0	0	0	0	3	3	0	0	0	0	1	1	0	3	3	9	0	9
Child Exploitation	0	0	0	0	0	0	0	0	0	0	0	0	0	0	0	0	0	0	0	0	0	0	0	0
Child Sexual Exploitation	0	0	0	0	0	0	0	1	1	0	3	3	0	0	0	0	1	1	0	0	0	5	0	5
Concealed Pregnancy	0	0	0	0	0	0	0	0	0	0	0	0	0	0	0	0	0	0	0	0	0	0	0	0
Discriminatory	0	0	0	0	0	0	0	0	0	0	0	0	0	0	0	0	0	0	0	0	0	0	0	0
Domestic Abuse	0	3	3	1	4	5	6	3	9	10	14	24	0	4	4	5	3	8	0	1	1	32	22	54
Emotional	0	2	2	0	2	2	0	5	5	0	4	4	0	3	3	0	4	4	0	0	0	20	0	20
Emotional/ Psychological	0	0	0	2	0	2	3	0	3	5	0	5	5	0	5	4	0	4	0	0	0	0	19	19
Fabricated or Induced Illness	0	0	0	0	0	0	0	0	0	0	0	0	0	0	0	0	0	0	0	0	0	0	0	0
Financial Or Material	1	0	1	2	0	2	1	0	1	8	0	8	4	0	4	7	0	7	0	0	0	0	23	23
Female Genital Mutilation	0	0	0	0	0	0	0	0	0	0	0	0	0	0	0	0	0	0	0	0	0	0	0	0
Forced Marriage	0	0	0	0	0	0	0	0	0	0	0	0	0	0	0	0	0	0	0	0	0	0	0	0
Human Trafficking	0	1	1	0	0	0	0	2	2	0	0	0	0	0	0	0	0	0	0	0	0	3	0	3
Institutional/Organisational	3	0	3	10	0	10	5	0	5	22	0	22	14	0	14	6	0	6	0	0	0	60	0	60
Modern Slavery	0	0	0	0	0	0	0	0	0	0	0	0	0	0	0	0	0	0	0	0	0	0	0	0
Neglect	0	12	12	0	15	15	0	11	11	0	21	21	0	15	15	0	12	12	0	1	1	87	0	87
Neglect By Others	11	0	11	26	0	26	26	0	26	38	0	38	15	0	15	24	0	24	0	0	0	0	140	140
Neglect Of Home	6	0	6	20	4	24	19	3	22	17	3	20	6	1	7	8	2	10	0	0	0	13	76	89
No adult acting in the best interests of the child	0	0	0	0	3	3	0	0	0	0	6	6	0	1	1	0	6	6	0	0	0	16	0	16
Parent Taking Drugs And/Or Alcohol	0	4	4	0	9	9	0	6	6	0	17	17	0	5	5	0	6	6	0	0	0	47	0	47
Parents - Overdose/ Suicidal/ Mental Health	0	14	14	0	22	22	0	24	24	0	33	33	0	13	13	0	26	26	0	0	0	132	0	132
Physical	3	2	5	2	1	3	8	0	8	6	9	15	2	4	6	1	2	3	0	0	0	18	22	40
Refusal Of Medical Treatment For Child	0	0	0	0	0	0	0	0	0	0	1	1	0	0	0	0	0	0	0	0	0	1	0	1
Sexual	0	1	1	0	0	0	2	1	3	3	4	7	0	0	0	0	3	3	0	0	0	9	5	14
Sudden death of parent/ carer	0	0	0	0	0	0	0	0	0	0	0	0	0	0	0	0	1	1	0	0	0	1	0	1
Violent Extremism	0	0	0	0	0	0	0	0	0	0	0	0	0	0	0	0	0	0	0	0	0	0	0	0
<b>Total</b>	<b>24</b>	<b>41</b>	<b>65</b>	<b>63</b>	<b>61</b>	<b>124</b>	<b>70</b>	<b>56</b>	<b>126</b>	<b>109</b>	<b>118</b>	<b>227</b>	<b>46</b>	<b>46</b>	<b>92</b>	<b>55</b>	<b>68</b>	<b>123</b>	<b>0</b>	<b>5</b>	<b>5</b>	<b>395</b>	<b>367</b>	<b>762</b>

## Incidents

- 68 Safeguarding related DATIX incidents were logged in the month of May 2021. Previous month's figures have also been updated.

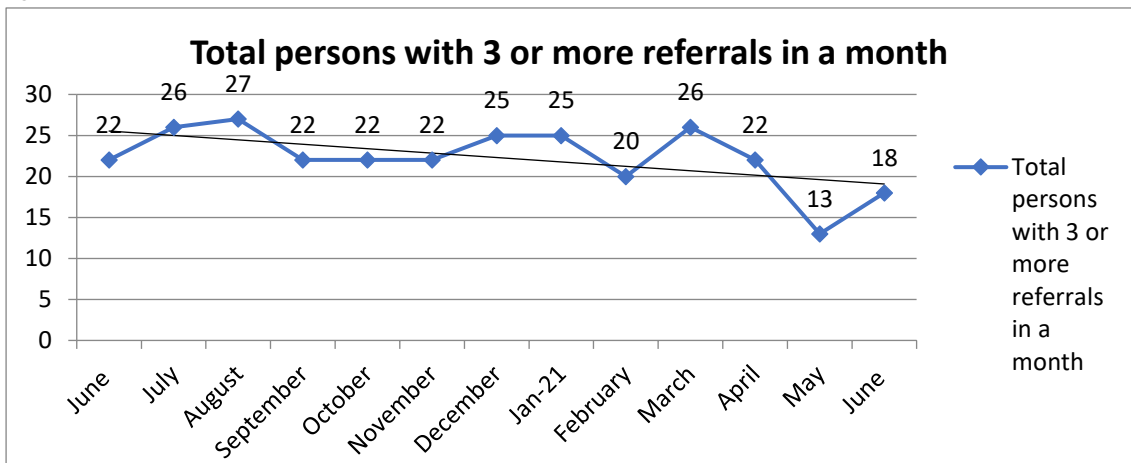


- 2 Patient Experience's had been logged where Safeguarding was highlighted as a concern. Previous month's figures have also been updated.

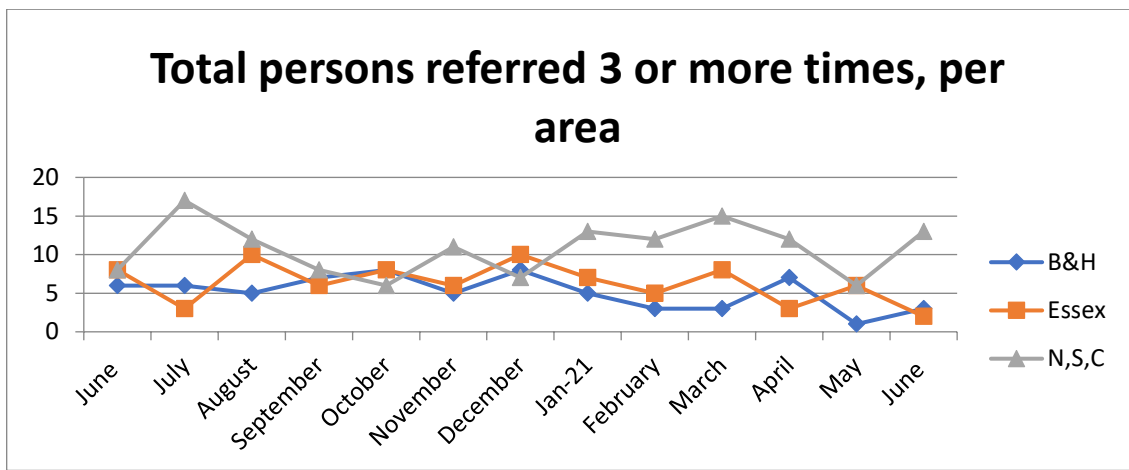


## Frequently Referred

- The Safeguarding Team obtain a monthly report on how many patients are referred 3 or more times in a month, from the Adastra system.

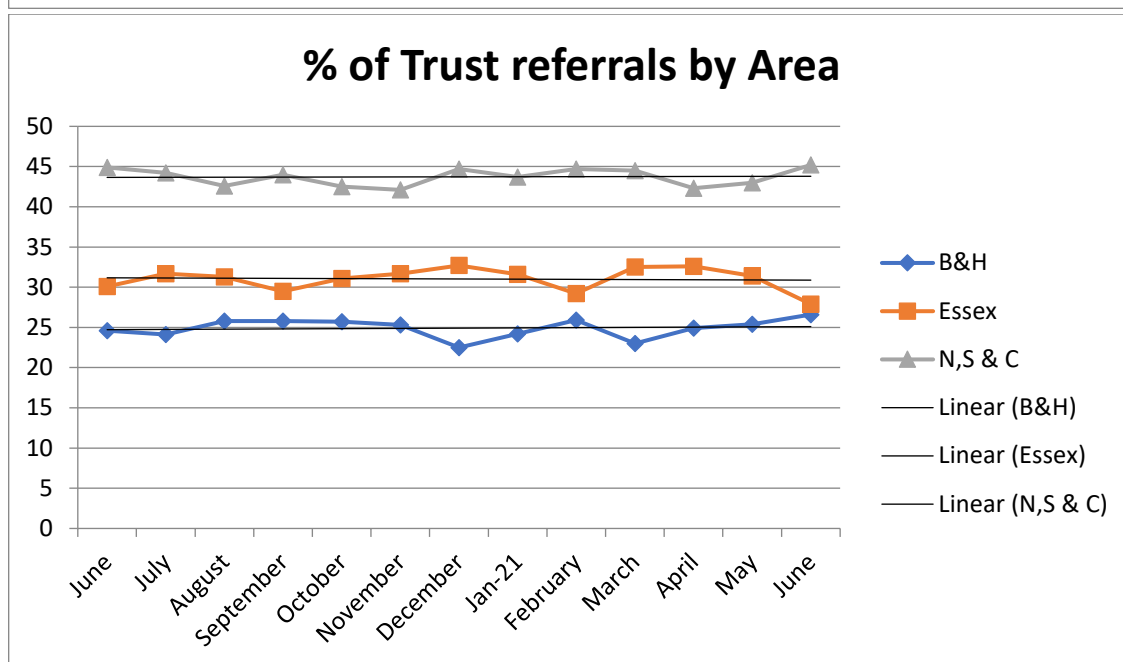
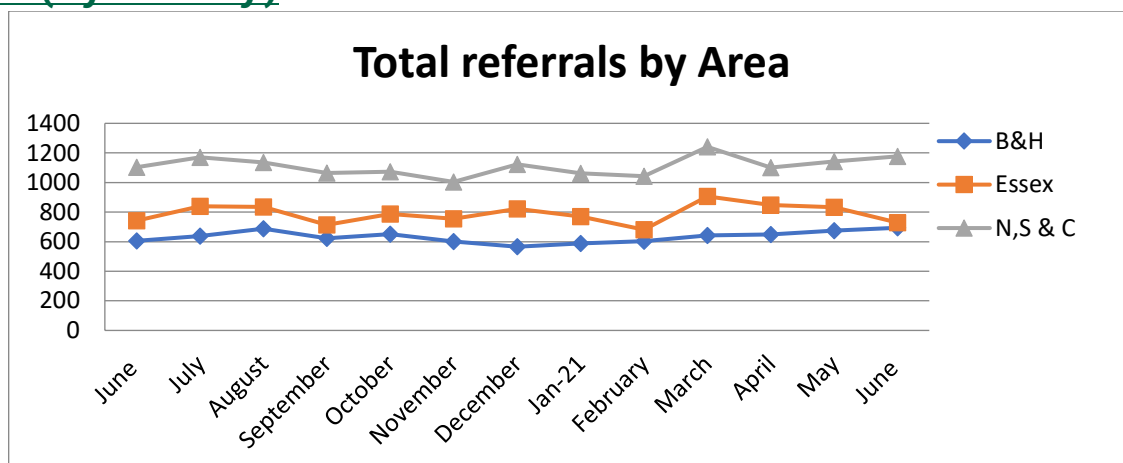


➤



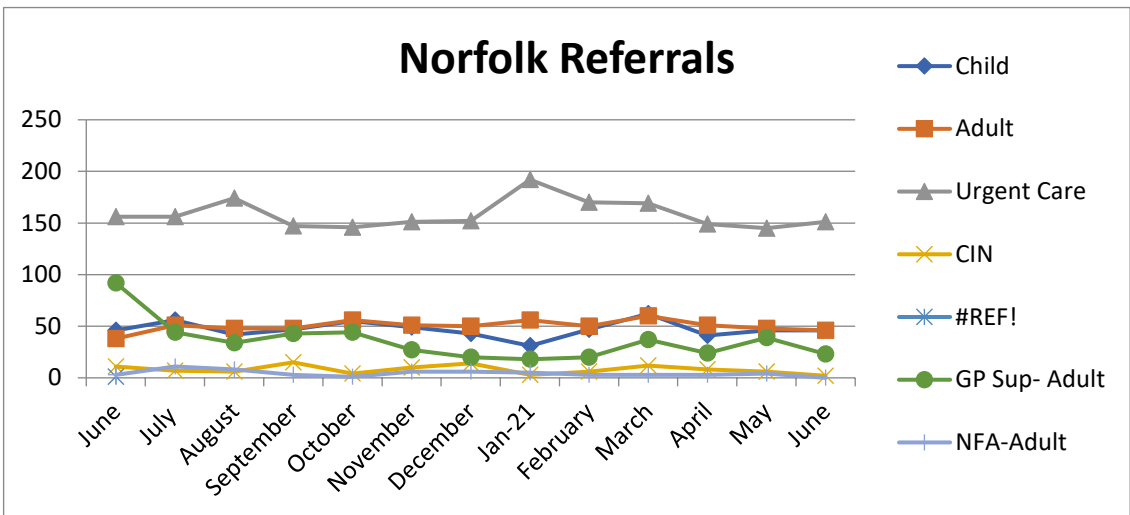
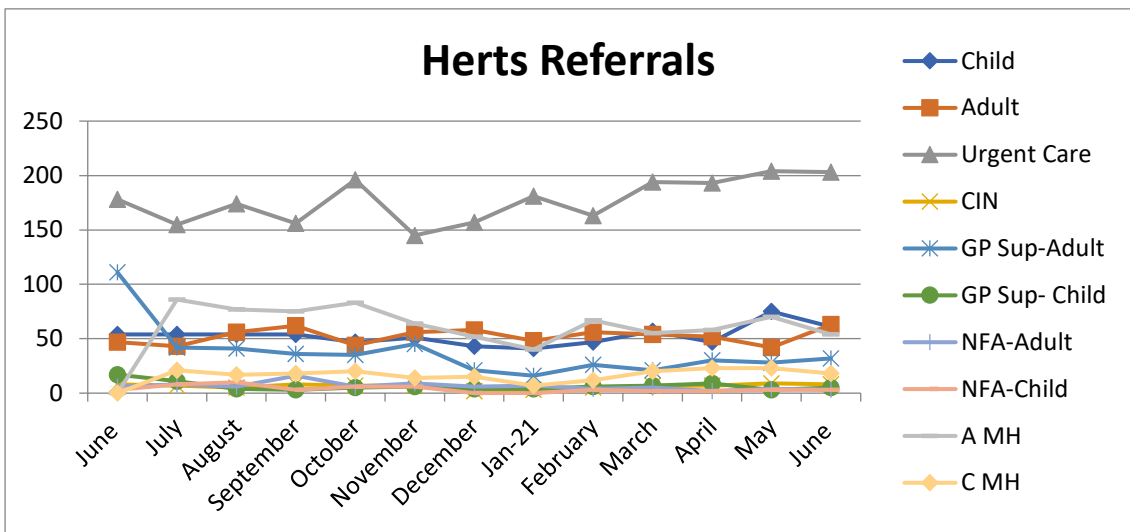
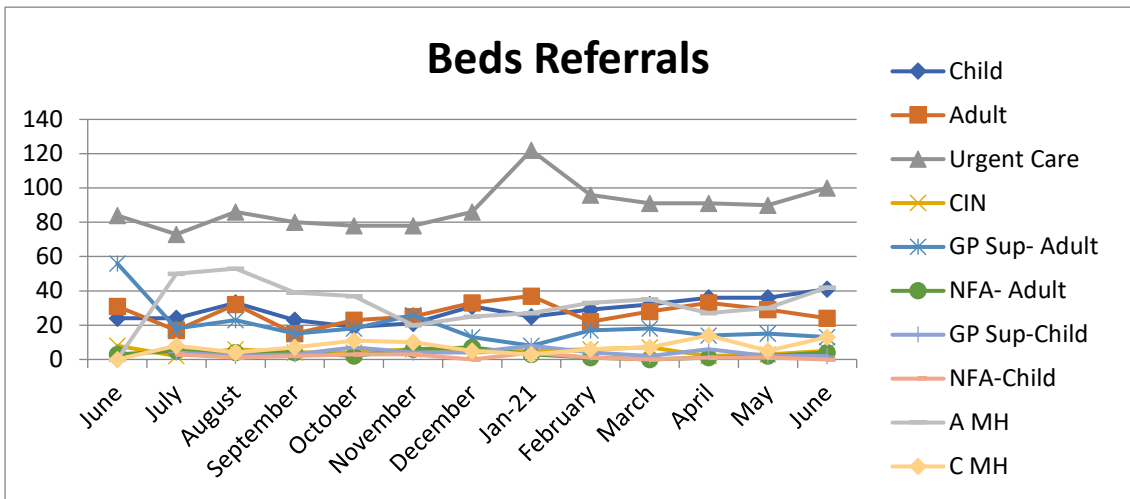
## Area & STP Information

### Area (by County)

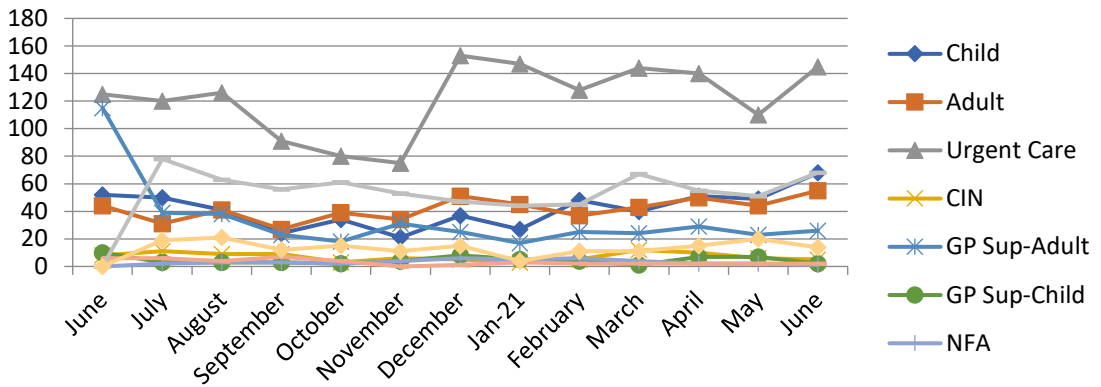


- The below table is a breakdown of referrals by area by Children & Adult, for information only.

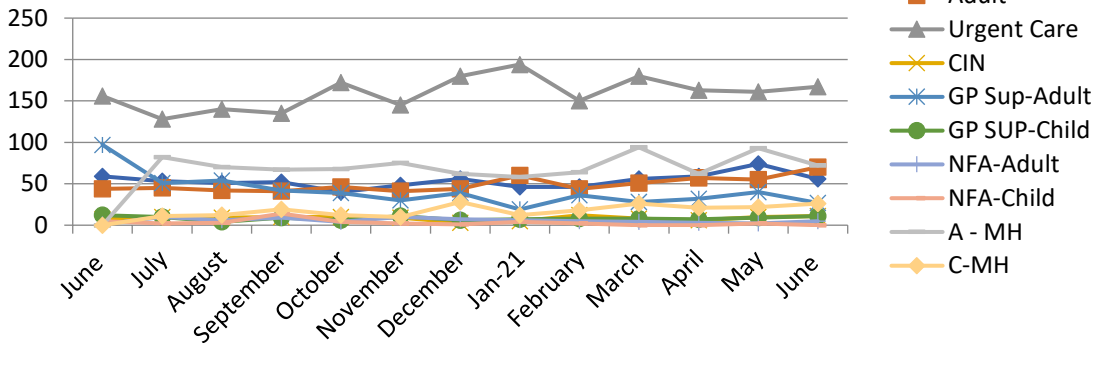
Month/Area Totals	Jun	Jul	Aug	Sep	Oct	Nov	Dec	Jan 21	Feb	Mar	Apr	May	June
<b>Beds</b>	201	204	244	192	202	199	208	242	215	220	225	213	244
<b>Herts</b>	404	435	444	431	449	403	358	347	389	422	423	461	450
<b>Cambs</b>	381	402	391	398	401	381	426	411	385	455	410	468	445
<b>Norfolk</b>	363	409	395	411	415	384	348	352	347	438	331	361	346
<b>Suffolk</b>	360	359	349	255	258	239	348	300	311	348	361	314	386
<b>Essex</b>	741	840	834	714	787	754	821	769	681	906	849	833	728



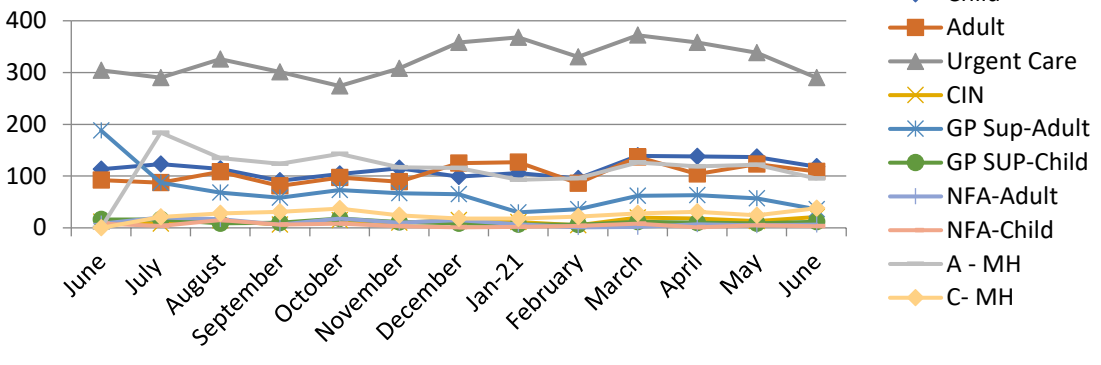
### Suffolk Referrals



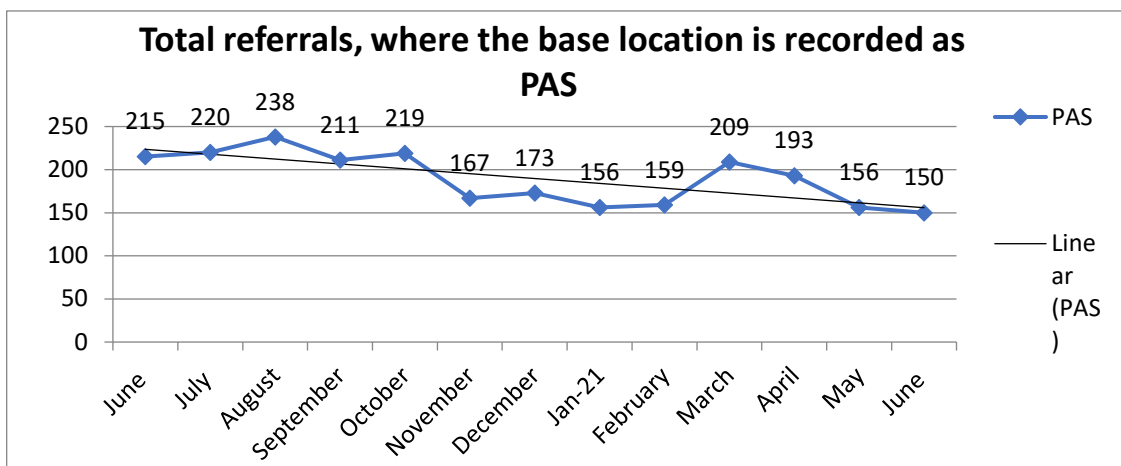
### Cambs Referrals



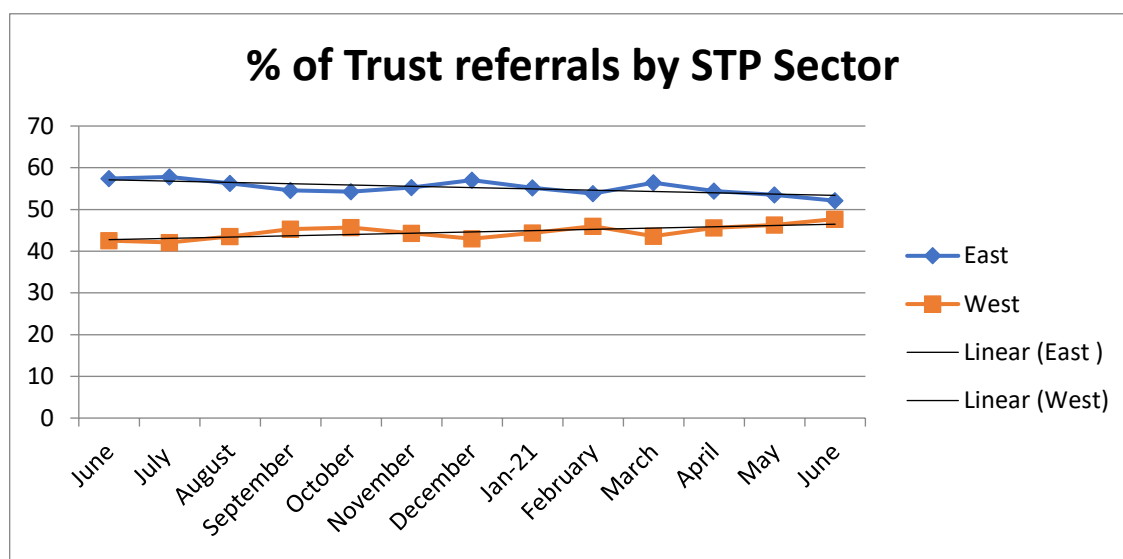
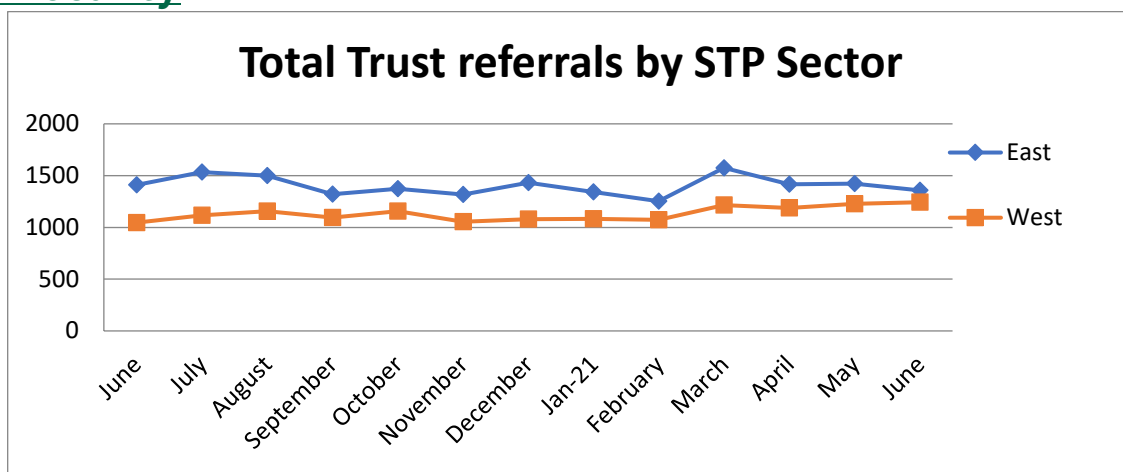
### Essex Referrals



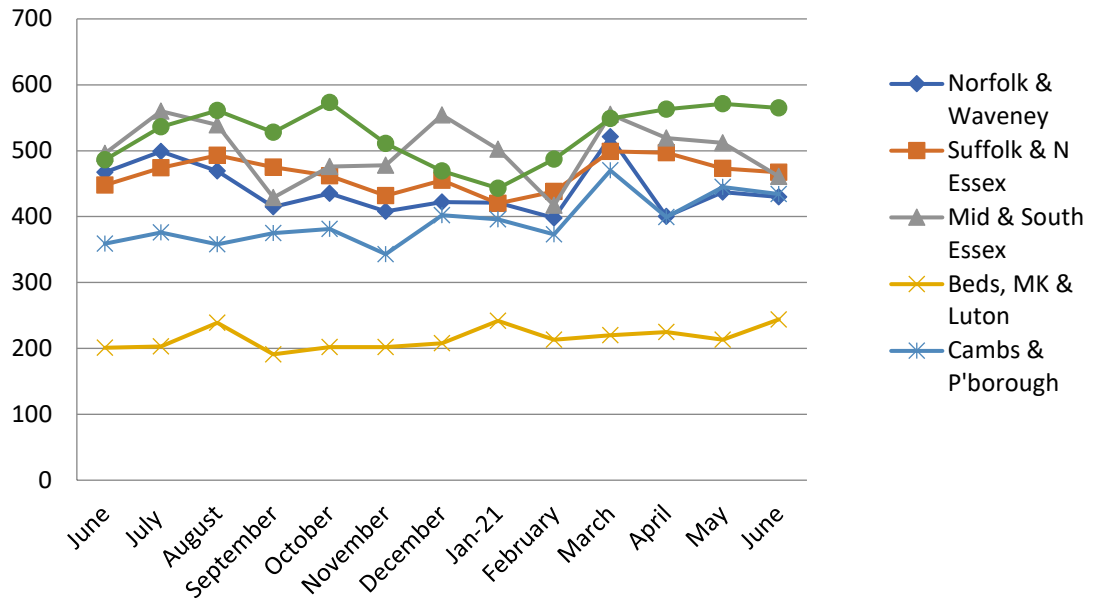
The Safeguarding team collate information on Private Ambulance Services, from the Base Station location provided on the referral. The accuracy of the information is subject to human error, due to inaccuracies with reporting referrer's base location.



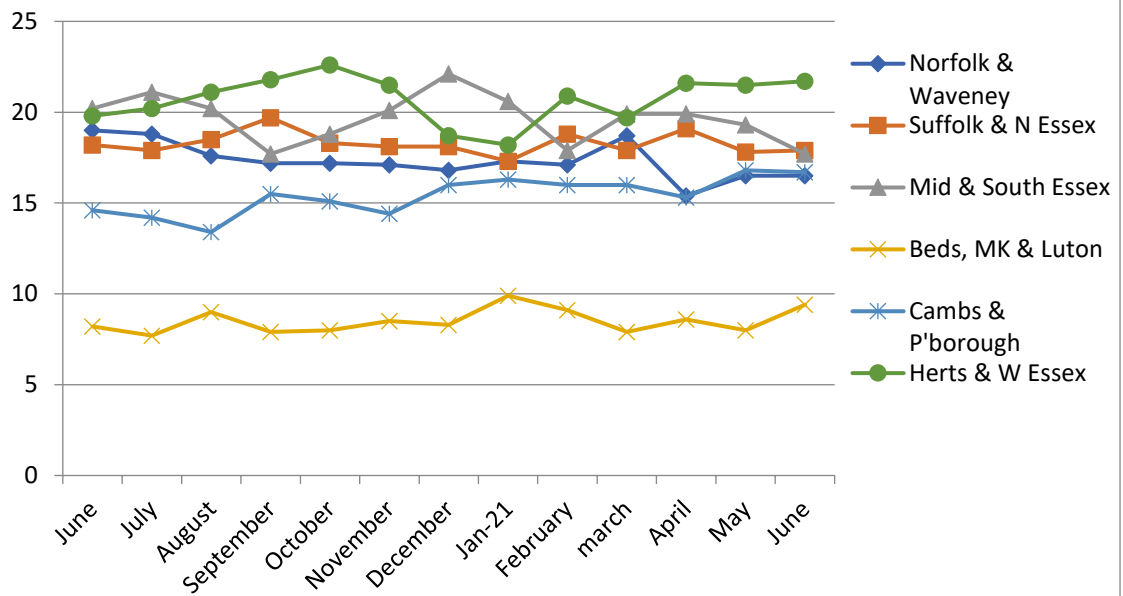
## STP Locality



### Total Trust referrals by STP Area



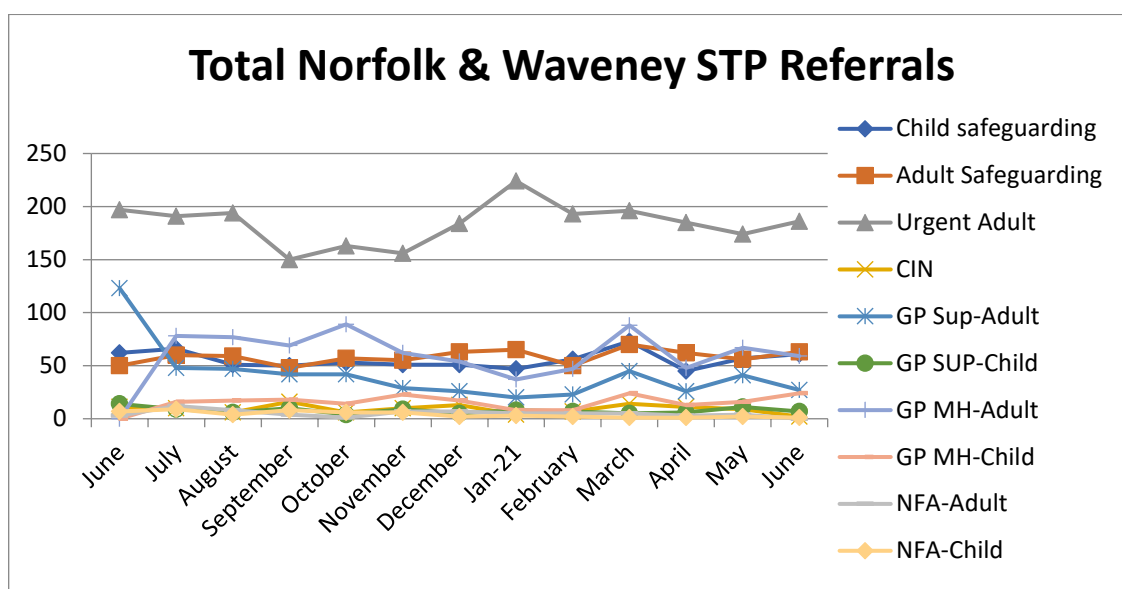
### % of Trust referrals by STP Area



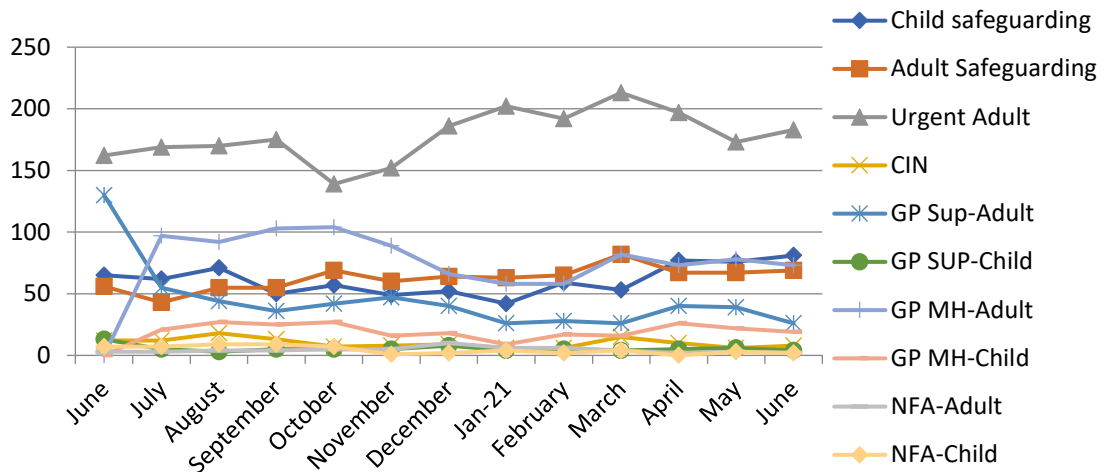


➤ The below table is a breakdown of referrals by STP area by Children & Adult.

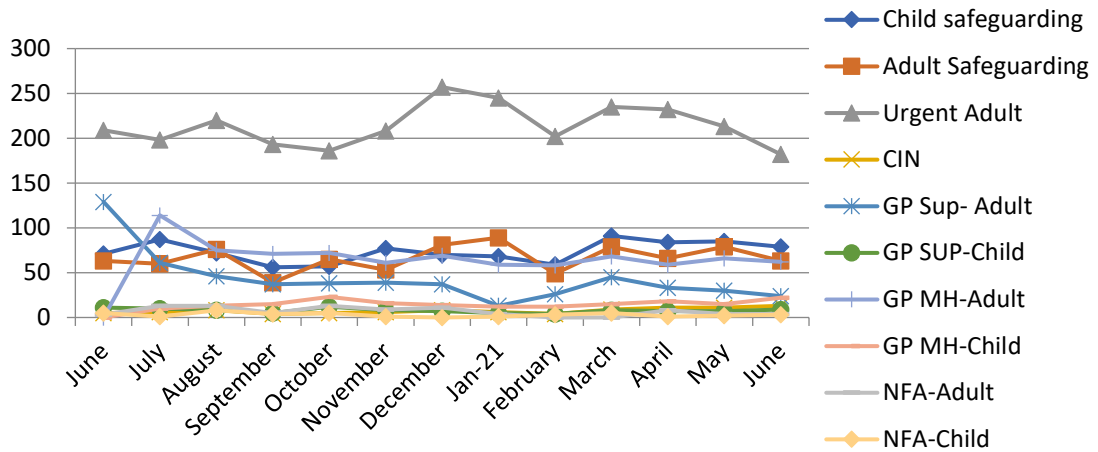
Month/Area Totals		Jun	Jul	Aug	Sep	Oct	Nov	Dec	Jan 21	Feb	Mar	Apr	May	June
EAST	Norfolk & Waveney	467	499	469	415	435	408	422	421	398	521	400	437	430
	Suffolk & North Essex	448	474	493	475	462	432	455	420	438	499	497	473	467
	Mid & South Essex	496	560	539	429	476	478	554	502	417	555	519	512	461
WEST	MK, Beds & Luton	201	203	239	191	202	202	208	242	213	220	225	213	244
	Cambs & P 'Borough	359	376	358	375	381	343	402	396	373	447	399	445	434
	Herts & West Essex	486	536	561	528	573	511	469	443	487	549	563	571	565



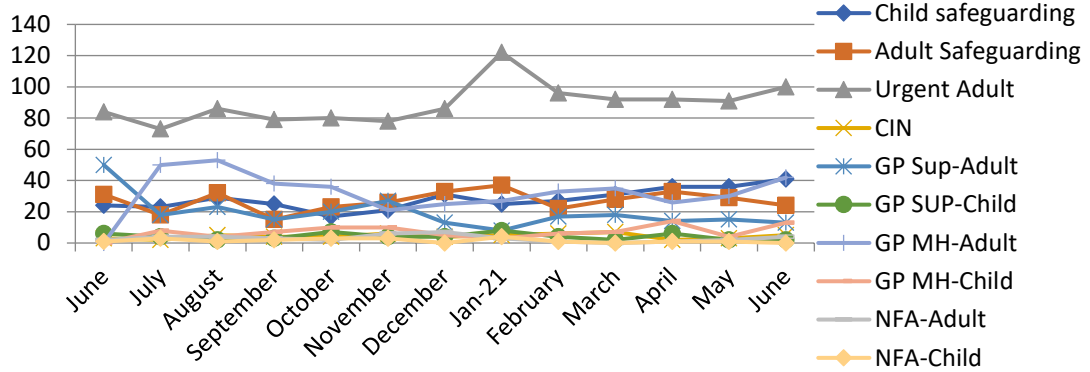
### Total Suffolk & N Essex STP Referrals

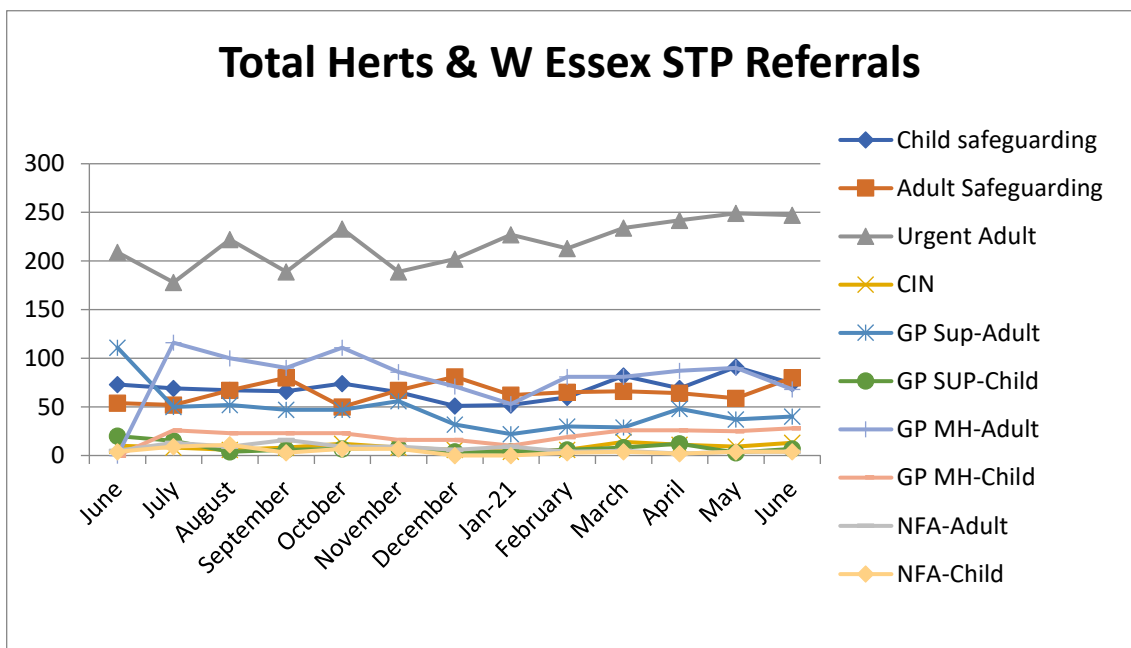
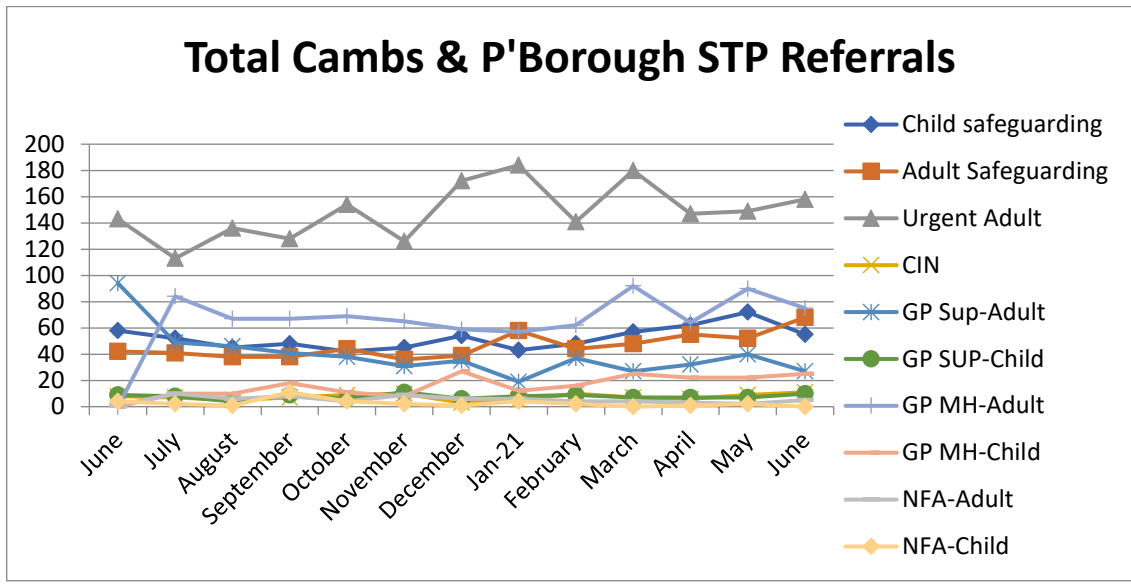


### Total Mid & South Essex STP Referrals



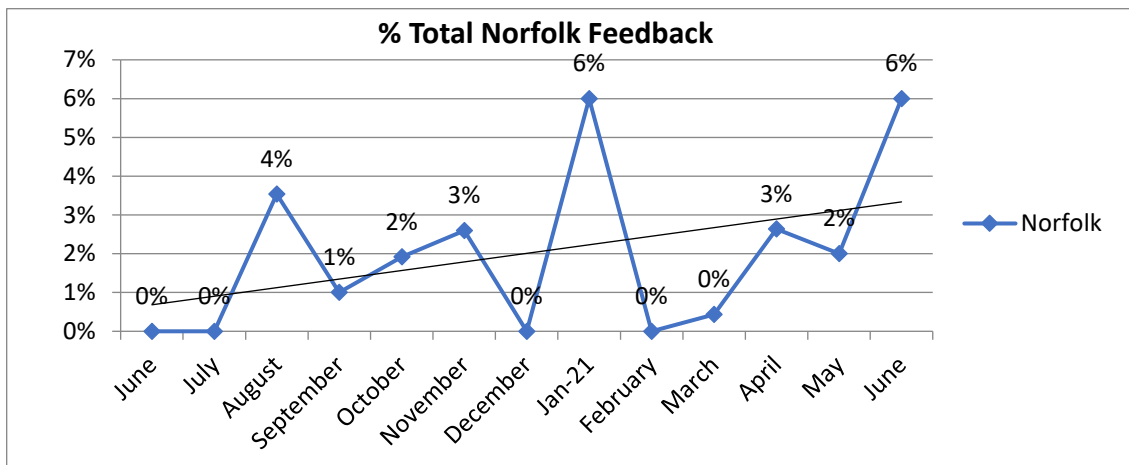
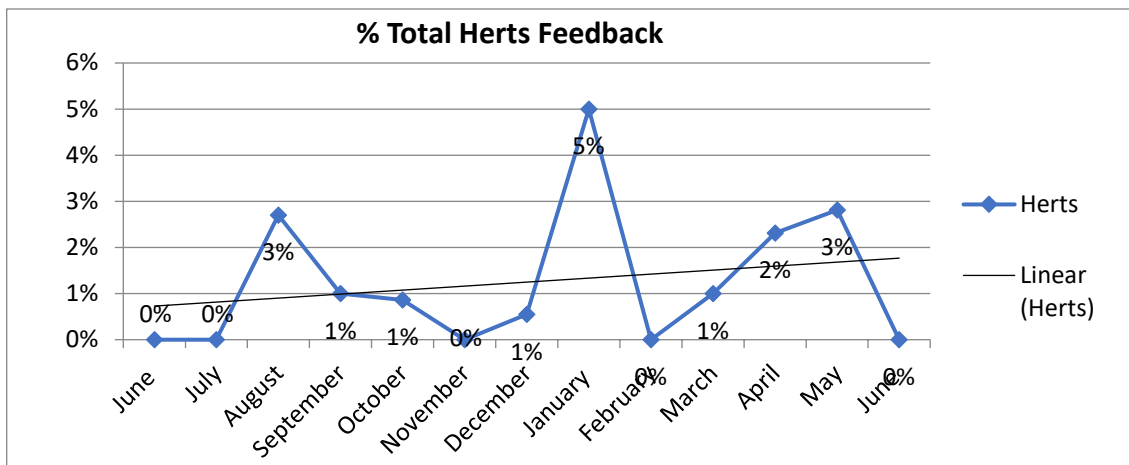
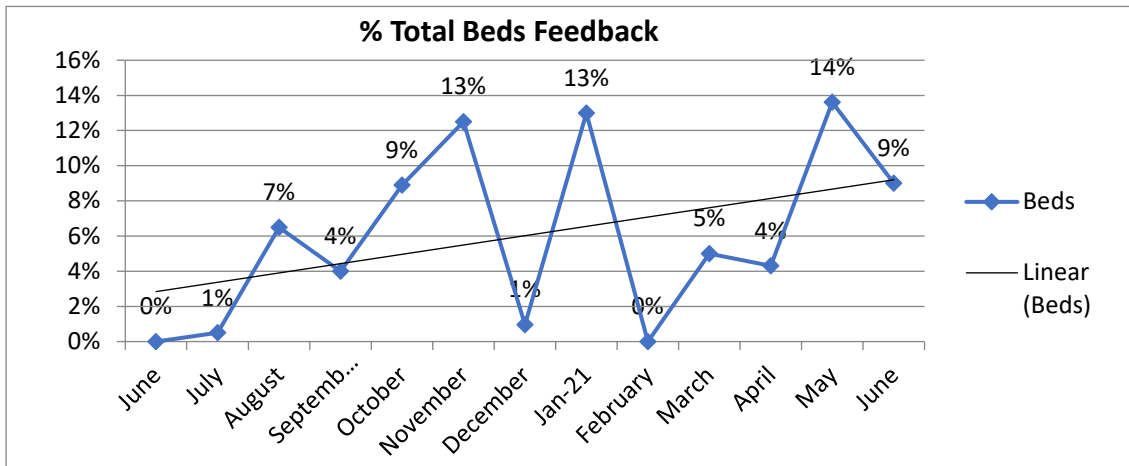
### Total MK, Beds & Luton STP Referrals

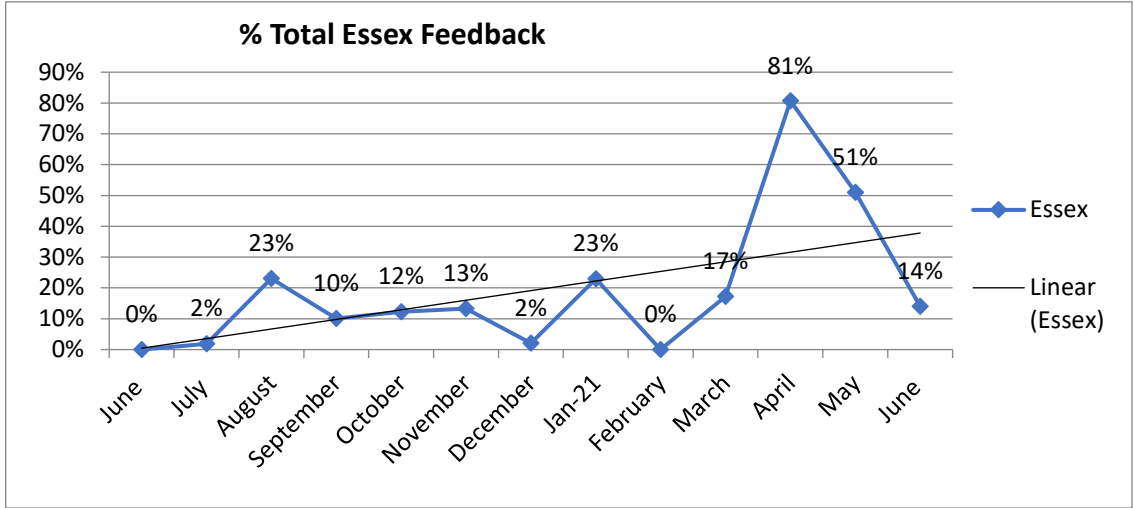
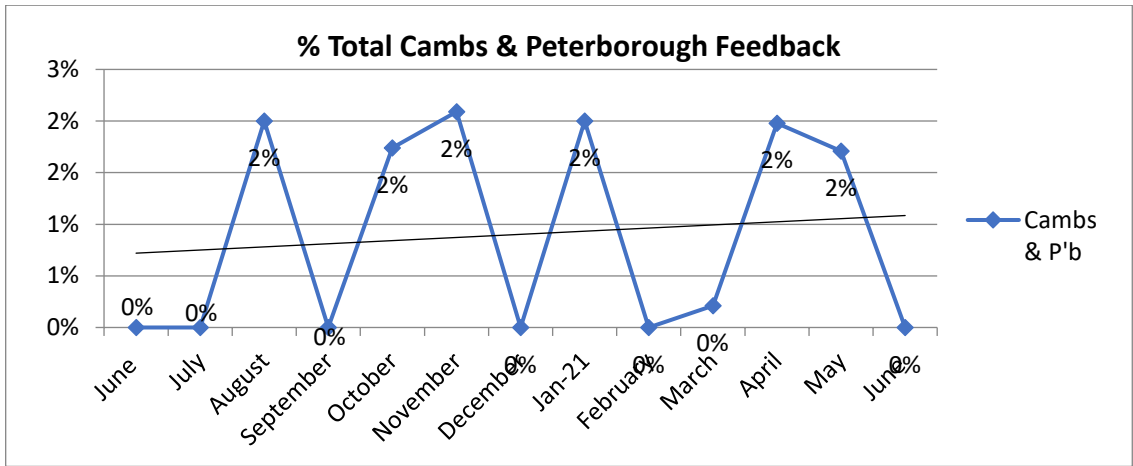
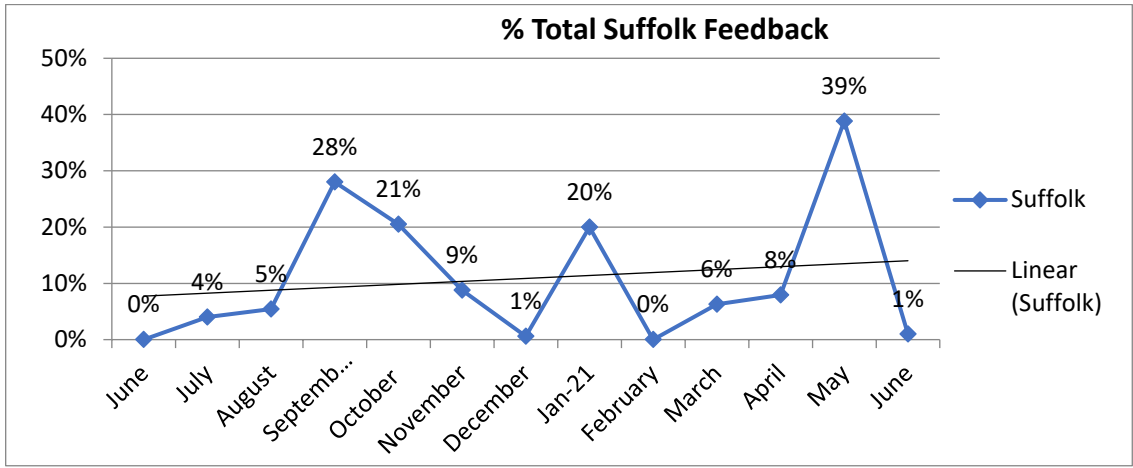


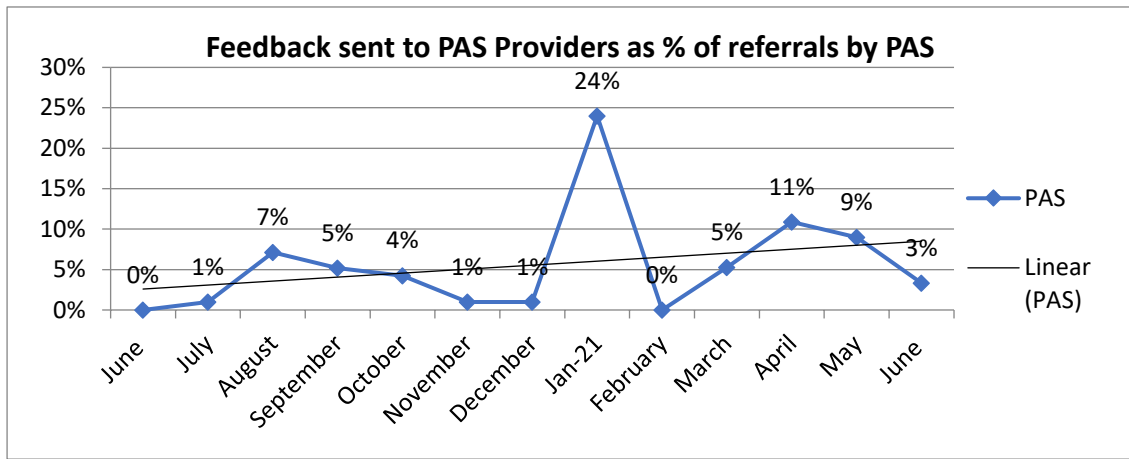


## Feedback

- The below represents the amount of feedback sent out to staff/volunteers in Sector area from both GP and LA's.







Author: Angela Jones

Date: July 2021