



Monthly Safeguarding Report

Safeguarding Team

Report Period: May 2021
Date of Report: June 2021

Contents

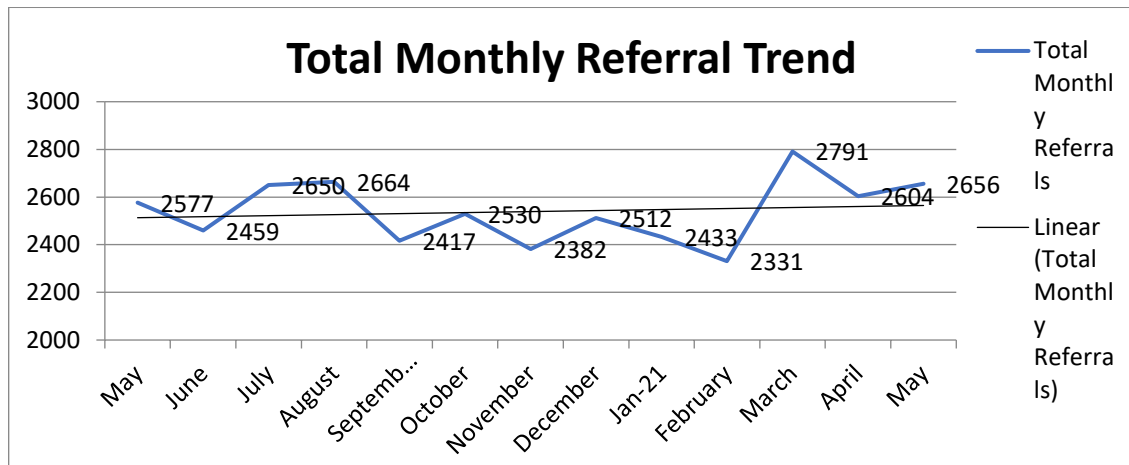
- Summary [Page 3](#)
- Overall Trust Safeguarding Statistics [Page 4](#)
- Audit results [Page 6](#)
- Average SPOC Case Entry Time [Page 11](#)
- SCR/DHR/SAR's [Page 11](#)
- Safeguarding Supervision [Page 12](#)
- Feedback information [Page 12](#)
- RFI & CDOP [Page 13](#)
- Categories of Abuse [Page 13](#)
- Incidents [Page 15](#)
- Frequently Referred [Page 16](#)
- Area & STP Analysis- Detailed referrals & feedback [Page 17](#)

Summary

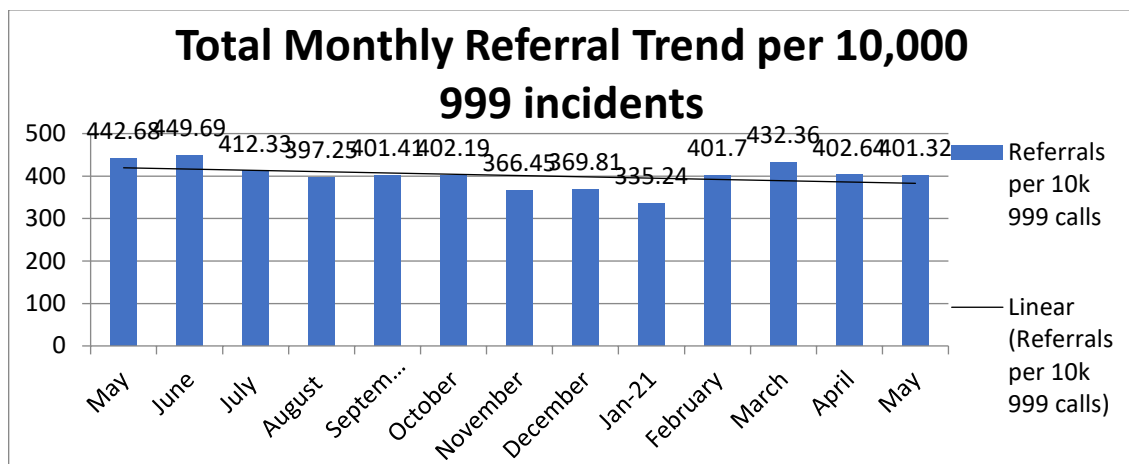
- Safeguarding referrals in May 2021 have increased to 2656, an annual increase of 3.06% and a 1.99% increase from the previous month. We are seeing the improved question sets help streamline the referral process and referrals will be sent to the most appropriate service.
- Trust referrals per 10,000 999 incidents decreased to 401.32, an annual decrease of 9.34% and a decrease of 0.32% on the previous month.
- SPOC Case Entry Time remained at 10.48 minutes per referral.
- The total active amount of Serious Case reviews to date at the end of May has increased to 28, with 3 new cases and 0 closed. The team will continue working on lowering this figure and closing inactive cases.
- Compliance for Safeguarding Supervision for managers within EEAST who hold a safeguarding portfolio has decreased to 0%. The Safeguarding team are at 63% The Team are working towards an amended list for people receiving supervision.
- 602 feedback email has been provided to staff on referrals during this month.
- Requests for information has decreased to 80 in May 2021.
- DATIX Safeguarding incidents increased to 68. Patient Experiences logged in May decreased to 2.
- People who have been frequently referred 3 or more times has decreased to 13.

Overall Trust Safeguarding Statistics

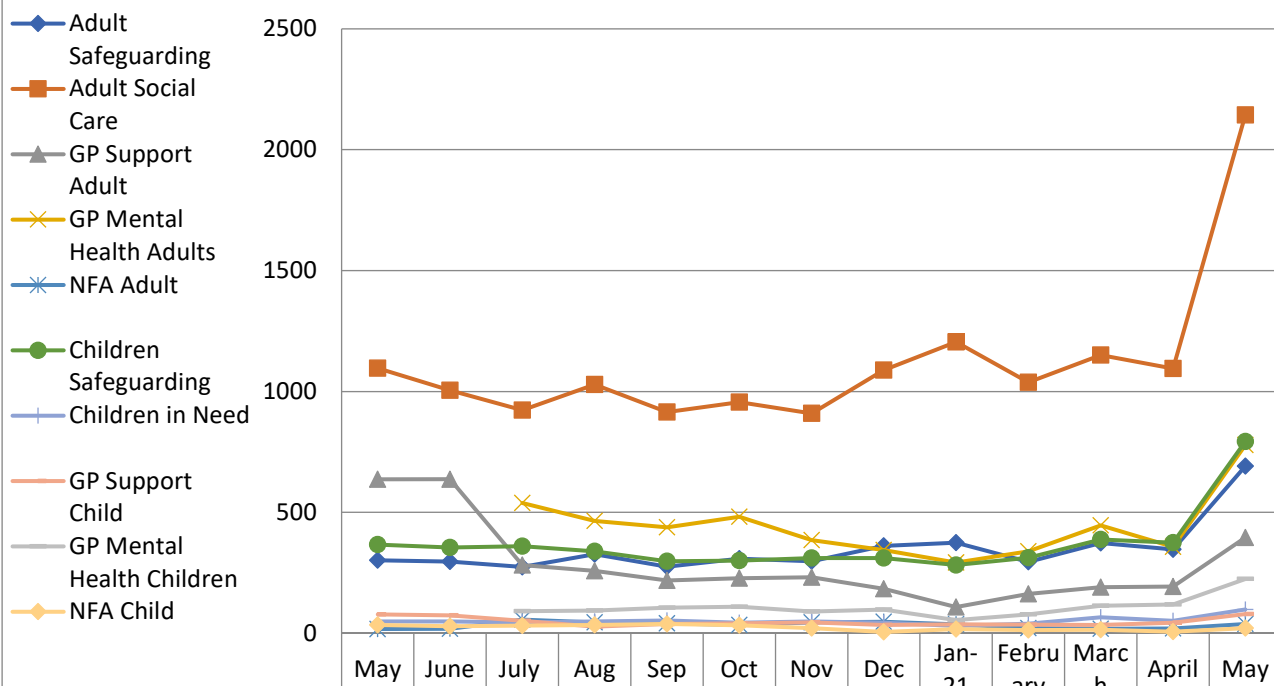
- 2656 Social Care referrals were made as a Trust in May 2021. An annual increase of 3.06% and an increase of 1.99% on the previous month.



- Referrals per 10,000 999 calls in May 2021 were 401.32, an annual decrease of 9.34% and a monthly decrease of 0.32% on the previous month.



Total referrals by Case Type Trend

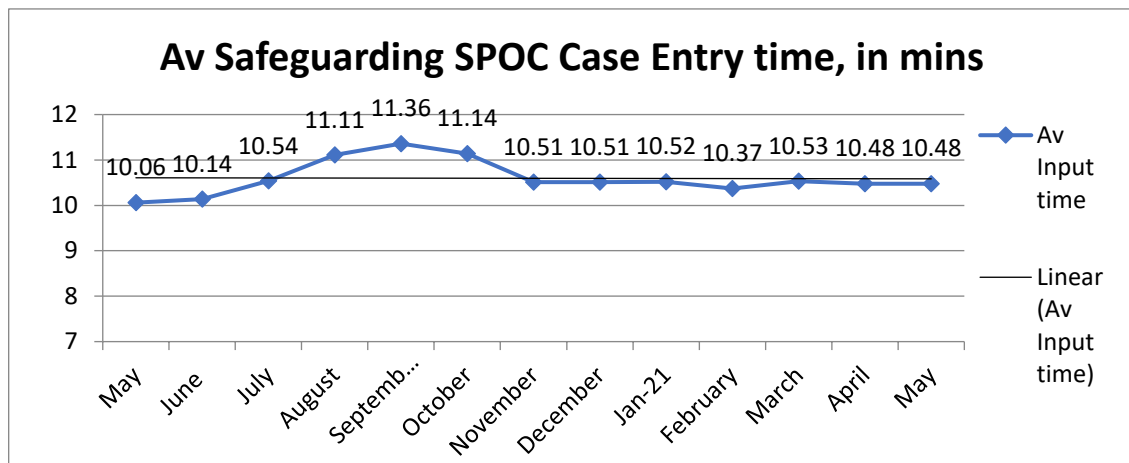


	May	June	July	Aug	Sep	Oct	Nov	Dec	Jan-21	February	March	April	May
Adult Safeguarding	302	296	274	327	275	308	297	361	374	295	373	347	691
Adult Social Care	1096	1004	922	1028	914	955	909	1088	1204	1038	1150	1095	2144
GP Support Adult	636	637	281	258	218	227	231	183	108	162	190	193	395
GP Mental Health Adults			539	464	438	481	385	344	292	339	446	357	778
NFA Adult	17	18	56	44	41	34	45	47	36	20	18	19	38
Children Safeguarding	366	354	360	339	297	300	311	310	282	312	387	374	793
Children in Need	48	49	45	49	52	43	49	43	30	39	66	51	98
GP Support Child	78	73	51	27	38	41	45	34	37	35	34	43	79
GP Mental Health Children			91	94	106	109	89	97	54	78	113	119	224
NFA Child	34	28	31	34	38	32	21	5	16	13	14	6	20

Average SPOC Case Entry Time

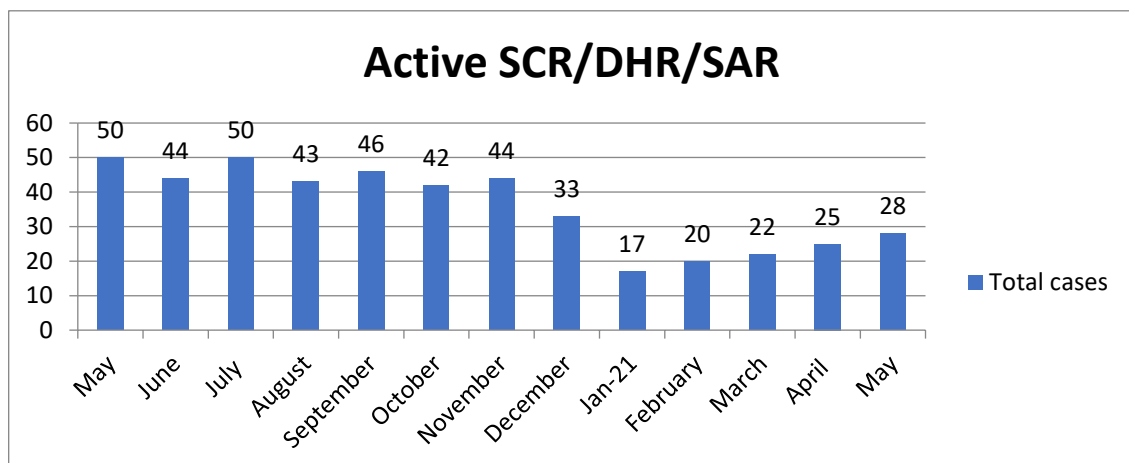
The SPOC Call Centre monitor call statistical information for all the services they provide. The Safeguarding Team requested the average call length of each Safeguarding referral call made by clinicians into the call centre.

SPOC have been able to provide the average time taken to log each referral from the start to finish time recorded on Adastra as a representation of the average time taken to complete each referral.



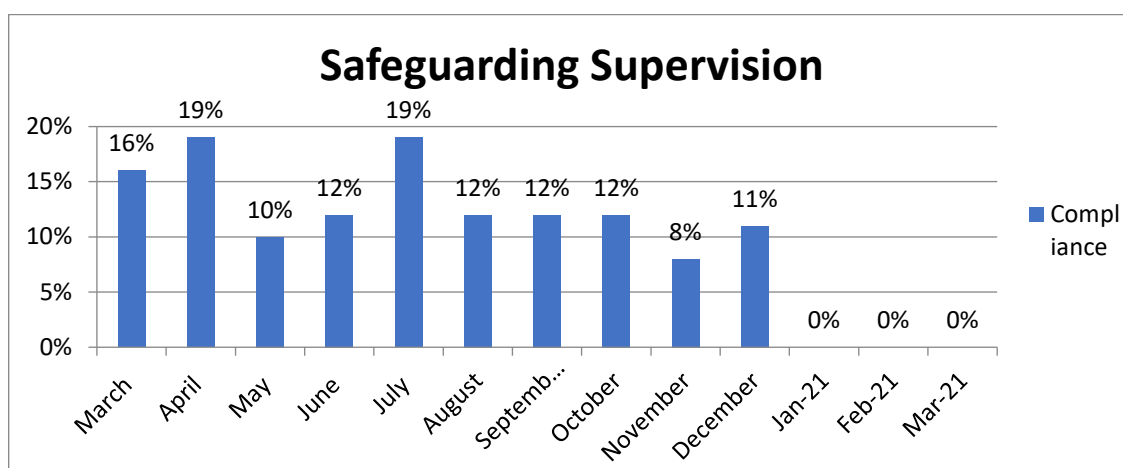
SCR/DHR/SAR's

The below represents the current amount of active Serious Case Reviews (SCR)/Domestic Homicide Reviews (DHR) and Serious Adults Reviews (SAR), either at stage of scoping or submitted Chronology, draft or submitted Independent Management Review or outstanding recommendations for completion, up to the end of this month. 3 new Case Review notifications were received in May 2021, with 0 cases being closed.



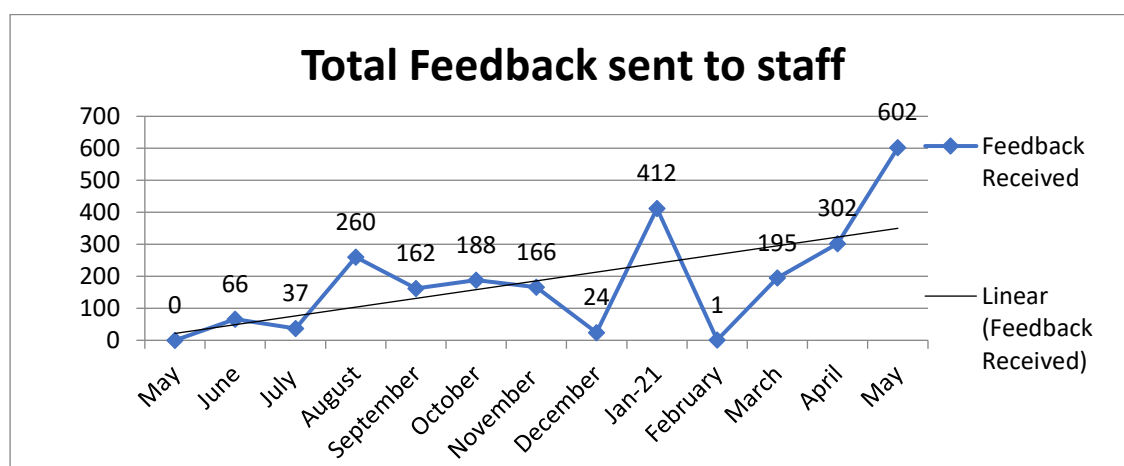
Safeguarding Supervision

The below represents the 0% of nominated Safeguarding Lead's, Trust Board, Managers and Area Clinical Leads who have had documented Safeguarding Supervision within the last 6 months. There are now 19 identified personnel which require Supervision by the Safeguarding Lead, Named Professional, Safeguarding specialist for Adults & Named Doctor for Safeguarding. This list will be revisited with amendments made in line with the new operations structure.



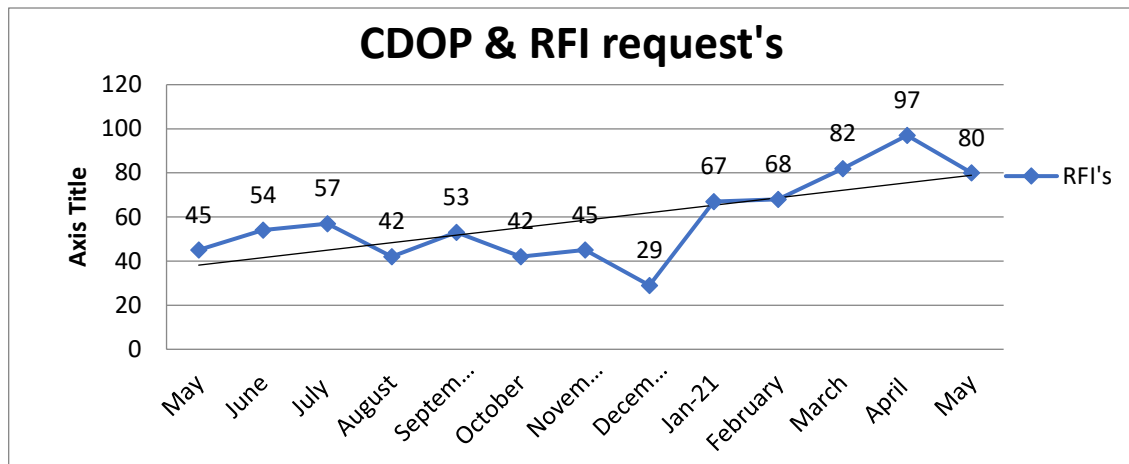
Overall Trust Feedback for all Safeguarding Referrals

In May 2021, 602 of 2656 feedback was sent out by the safeguarding team. This is due to capacity within the team and ongoing operational pressures.



RFI's and CDOP Requests

- The below represents the amount of information which was requested from the Safeguarding team from external organisations, excluding Serious Case/Adult or Domestic Homicide reviews.



Categories of Abuse

- The below details the total categories of abuse for all Safeguarding Adult & Child referrals, to show the reasoning for the Trust's Safeguarding concerns, followed by a breakdown per locality for last month.

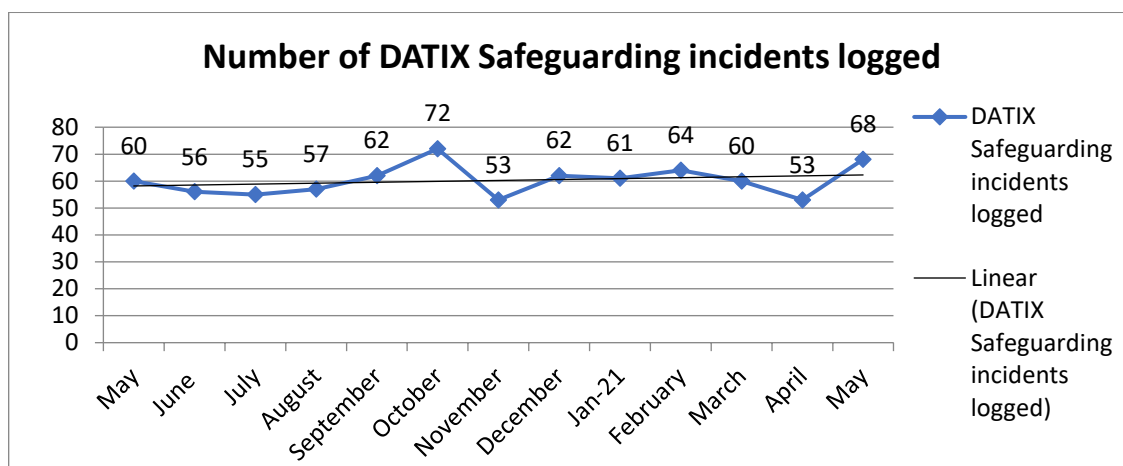
What is the suspected type of abuse?	December 20		January 2021		February 2021		March 2021		April 2021		May 2021	
	Child	Adult	Child	Adult	Child	Adult	Child	Adult	Child	Adult	Child	Adult
Adult conveyed - no care for children	3	0	0	0	1	0	2	0	0	0	3	0
Child Death	3	0	1	0	1	0	3	0	9	0	1	0
Child Exploitation	3	0	0	0	0	0	0	0	1	0	3	0
Child Sexual Exploitation	0	0	1	0	0	0	3	0	4	0	4	0
Concealed pregnancy	0	0	1	0	1	0	1	0	1	0	4	0
Discriminatory	-	-	0	0	0	0	0	0	0	0	0	0
Domestic Abuse/Violence	51	22	30	14	27	19	40	21	30	21	37	22
Emotional	20	0	9	0	14	0	22	0	29	0	15	0
Emotional/ Psychological	0	25	0	10	0	9	0	32	0	30	0	30
Fabricated or Induced Illness	1	0	0	0	0	0	0	0	0	0	0	0
Financial or Material	0	19	0	21	0	15	0	29	0	19	0	17
FGM	0	0	0	0	0	0	0	0	0	0	0	0
Forced Marriage	-	-	0	0	0	0	0	0	0	0	0	0
Human Trafficking	4	0	1	0	6	0	1	2	4	0	0	0
Institutional/Organisational	0	44	0	65	0	38	0	49	0	61	0	51
Modern Slavery	-	-	-	-	0	0	2	3	0	1	0	0
Neglect	-	-	-	-	54	0	81	0	67	0	80	0
Neglect by others	0	121	0	164	0	127	0	129	0	125	0	139
Neglect of home	13	69	16	63	8	73	14	77	7	61	20	63
No adult acting in the best interests of the child	20	0	13	0	10	0	14	0	16	0	12	0
Parent Taking Drugs and/or Alcohol	40	0	38	0	47	0	49	0	36	0	36	0
Parents – Overdose/ Suicidal/ Mental Health	109	0	95	0	118	0	128	0	142	0	165	0
Physical	14	16	10	21	17	13	19	26	17	23	25	17
Refusal of Medical Treatment for Child	3	0	6	0	4	0	1	0	1	0	2	0
Sexual	3	3	5	2	2	0	6	4	6	5	8	5
Sudden death of adult/ carer	3	0	1	0	2	0	1	0	4	0	4	0
Violent Extremism	0	0	0	1	-	1	0	1	0	1	0	0

Adult and Child Referrals by Sector

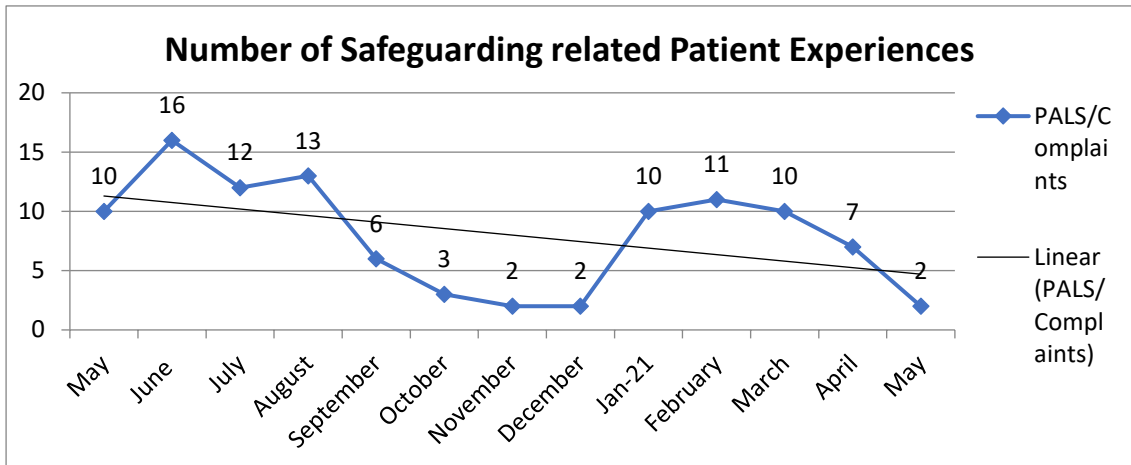
Suspected Type of Abuse	Beds			Herts			Cambs			Essex			Norfolk			Suffolk			Misc.		
	Adult	Child	Beds Total	Adult	Child	Herts Total	Adult	Child	Cambs Total	Adult	Child	Essex Total	Adult	Child	Norfolk Total	Adult	Child	Suffolk Total	Adult	Child	Misc. Total
Adult conveyed - no care for children	0	0	0	0	0	0	0	1	1	0	1	1	0	1	1	0	0	0	0	0	0
Child Death	0	0	0	0	0	0	0	0	0	0	1	1	0	0	0	0	0	0	0	0	0
Child Exploitation	0	0	0	0	2	2	0	0	0	0	1	1	0	0	0	0	0	0	0	0	0
Child Sexual Exploitation	0	0	0	0	1	1	0	0	0	0	1	1	0	1	1	0	1	1	0	0	0
Concealed Pregnancy	0	0	0	0	1	1	0	0	0	0	1	1	0	0	0	0	2	2	0	0	0
Discriminatory	0	0	0	0	0	0	0	0	0	0	0	0	0	0	0	0	0	0	0	0	0
Domestic Abuse	1	5	6	3	8	11	4	8	12	5	6	11	6	6	12	3	4	7	0	0	0
Emotional	0	3	3	0	1	1	0	4	4	0	5	5	0	0	0	0	2	2	0	0	0
Emotional/ Psychological	8	0	8	6	0	6	7	0	7	5	0	5	2	0	2	0	0	0	2	0	2
Fabricated or Induced Illness	0	0	0	0	0	0	0	0	0	0	0	0	0	0	0	0	0	0	0	0	0
Financial Or Material	1	0	1	1	0	1	5	0	5	7	0	7	1	0	1	2	0	2	0	0	0
Female Genital Mutilation	0	0	0	0	0	0	0	0	0	0	0	0	0	0	0	0	0	0	0	0	0
Forced Marriage	0	0	0	0	0	0	0	0	0	0	0	0	0	0	0	0	0	0	0	0	0
Human Trafficking	0	0	0	0	0	0	0	0	0	0	0	0	0	0	0	0	0	0	0	0	0
Institutional/Organisational	2	0	2	5	0	5	5	0	5	22	0	22	9	0	9	8	0	8	0	0	0
Modern Slavery	0	0	0	0	0	0	0	0	0	0	0	0	0	0	0	0	0	0	0	0	0
Neglect	0	12	12	0	12	12	0	14	14	0	25	25	0	7	7	0	9	9	0	1	1
Neglect By Others	14	0	14	18	0	18	22	0	22	44	0	44	20	0	20	20	0	20	1	0	1
Neglect Of Home	3	0	3	9	5	14	10	4	14	24	7	31	9	2	11	8	2	10	0	0	0
No adult acting in the best interests of the child	0	0	0	0	1	1	0	3	3	0	5	5	0	1	1	0	2	2	0	0	0
Parent Taking Drugs And/Or Alcohol	0	1	1	0	5	5	0	6	6	0	18	18	0	4	4	0	2	2	0	0	0
Parents - Overdose/ Suicidal/ Mental Health	0	12	12	0	34	34	0	23	23	0	55	55	0	20	20	0	20	20	0	1	1
Physical	0	3	3	0	3	3	2	4	6	12	8	20	1	4	5	2	3	5	0	0	0
Refusal Of Medical Treatment For Child	0	0	0	0	0	0	0	0	0	0	1	1	0	0	0	0	1	1	0	0	0
Sexual	0	0	0	0	1	1	0	5	5	4	1	5	0	0	0	1	1	2	0	0	0
Sudden death of parent/ carer	0	0	0	0	1	1	0	2	2	0	1	1	0	0	0	0	0	0	0	0	0
Violent Extremism	0	0	0	0	0	0	0	0	0	0	0	0	0	0	0	0	0	0	0	0	0
Total	29	36	65	42	75	117	55	74	129	123	137	260	48	46	94	44	49	93	3	2	5

Incidents

- 68 Safeguarding related DATIX incidents were logged in the month of May 2021. Previous month's figures have also been updated.

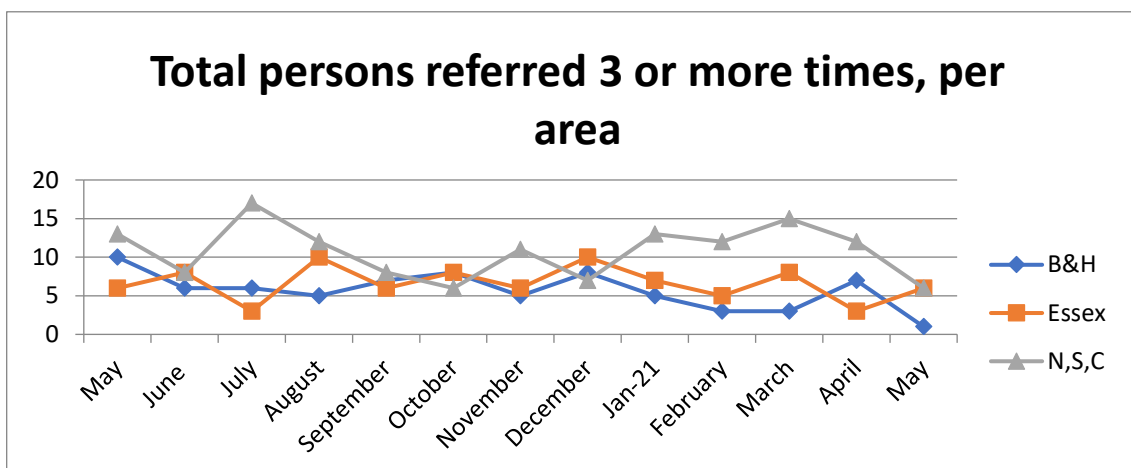
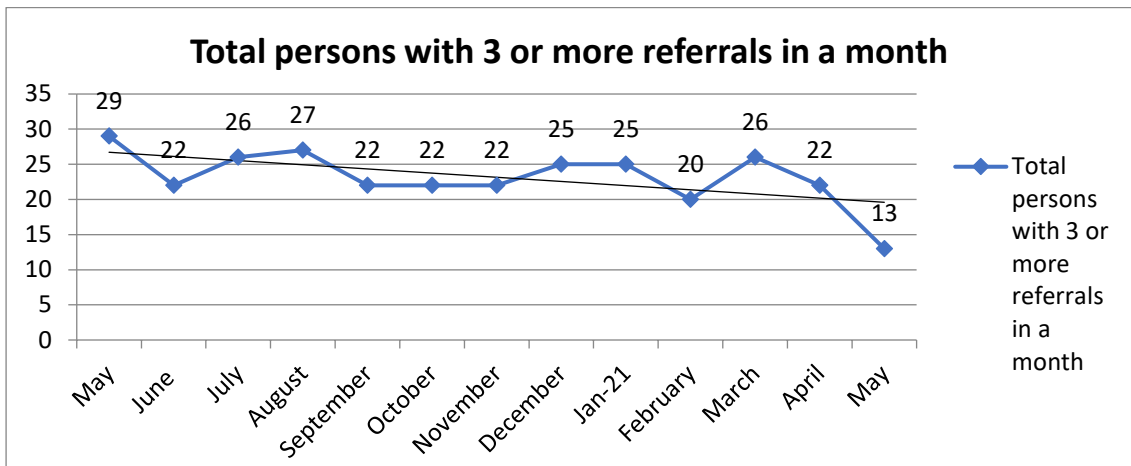


- 2 Patient Experience's had been logged where Safeguarding was highlighted as a concern. Previous month's figures have also been updated.



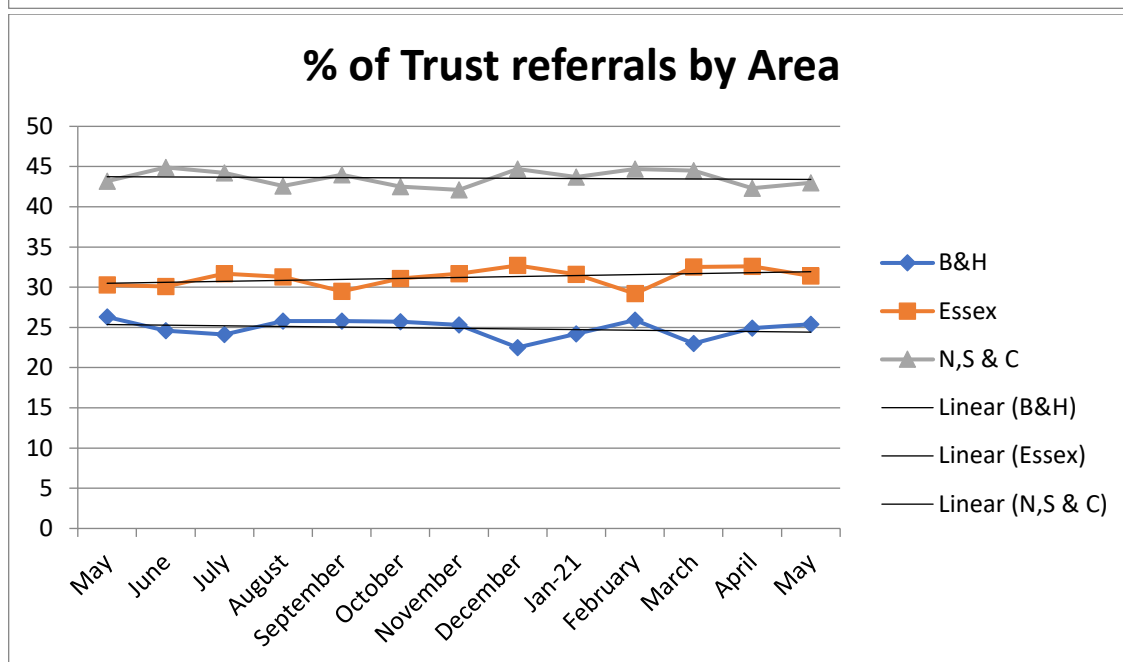
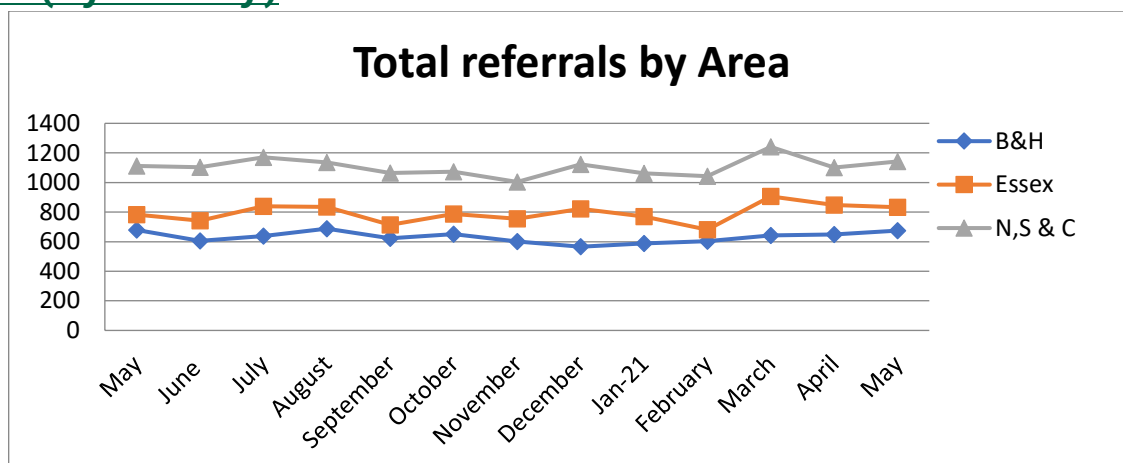
Frequently Referred

- The Safeguarding Team obtain a monthly report on how many patients are referred 3 or more times in a month, from the Adastra system.



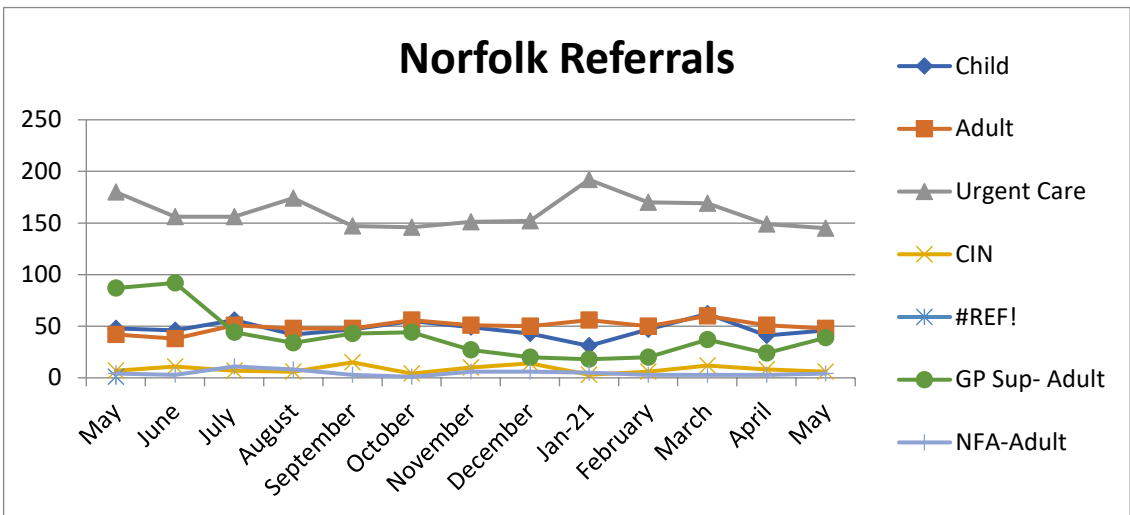
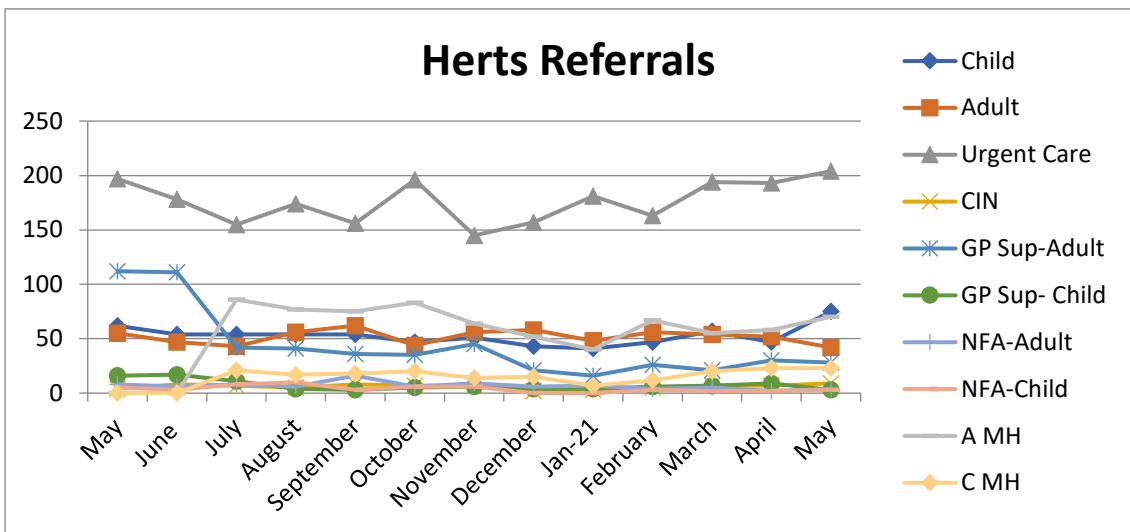
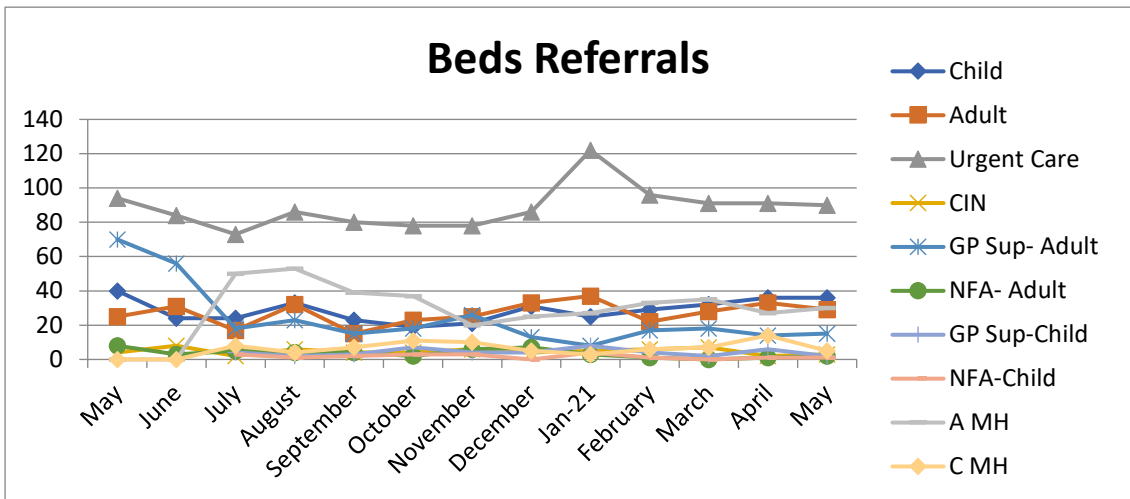
Area & STP Information

Area (by County)

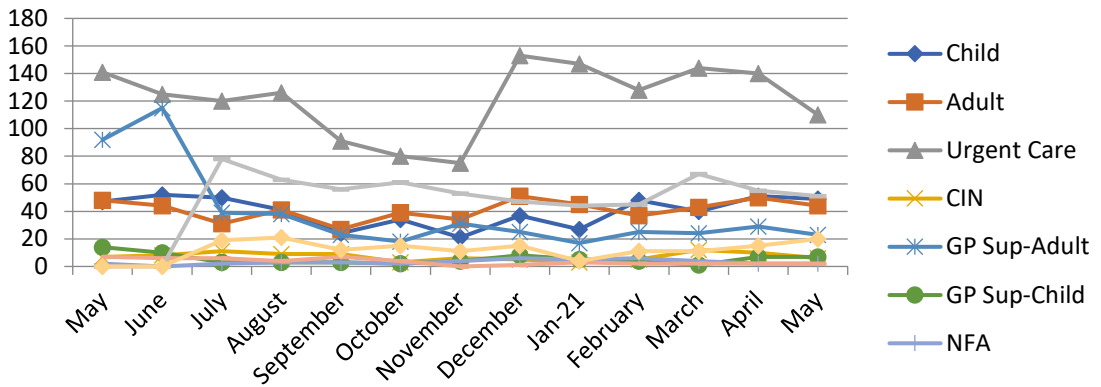


- The below table is a breakdown of referrals by area by Children & Adult, for information only.

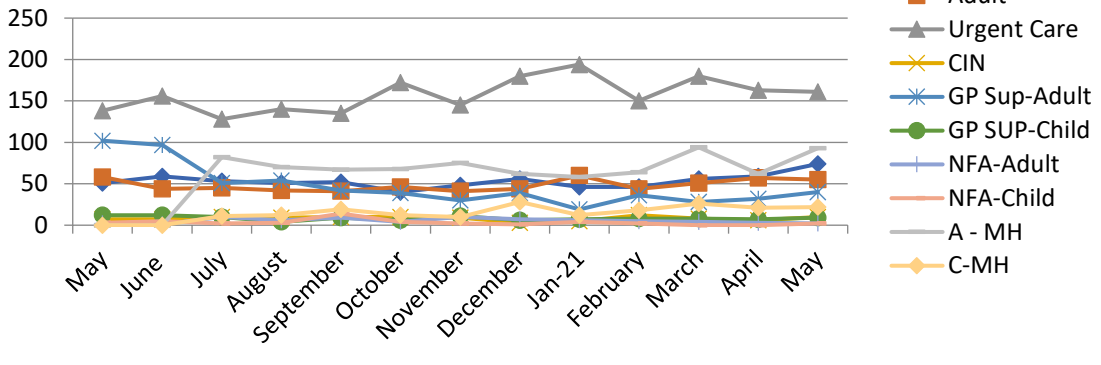
Month/Area Totals	May	Jun	Jul	Aug	Sep	Oct	Nov	Dec	Jan 21	Feb	Mar	Apr	May
Beds	241	201	204	244	192	202	199	208	242	215	220	225	213
Herts	438	404	435	444	431	449	403	358	347	389	422	423	461
Cambs	373	381	402	391	398	401	381	426	411	385	455	410	468
Norfolk	381	363	409	395	411	415	384	348	352	347	438	331	361
Suffolk	358	360	359	349	255	258	239	348	300	311	348	361	314
Essex	782	741	840	834	714	787	754	821	769	681	906	849	833



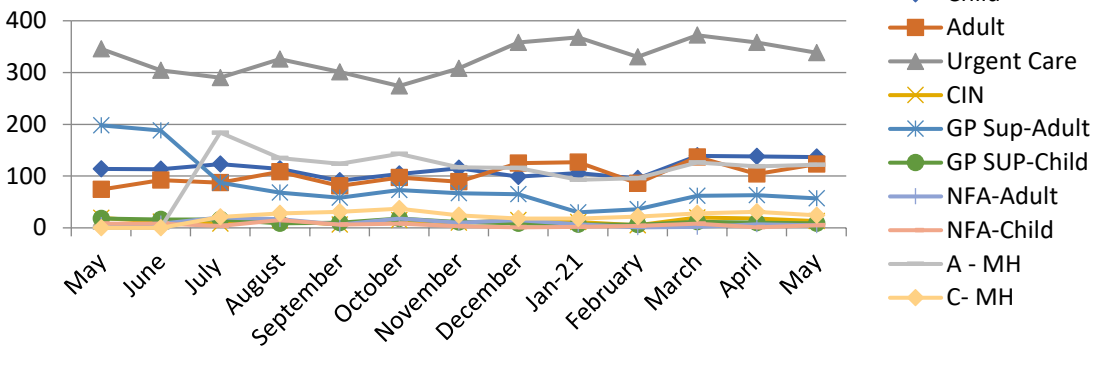
Suffolk Referrals



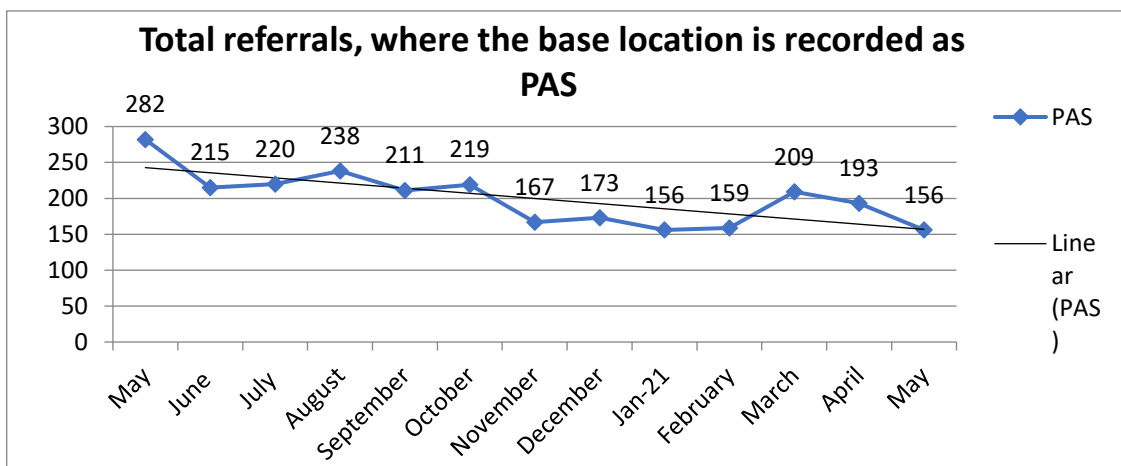
Cambs Referrals



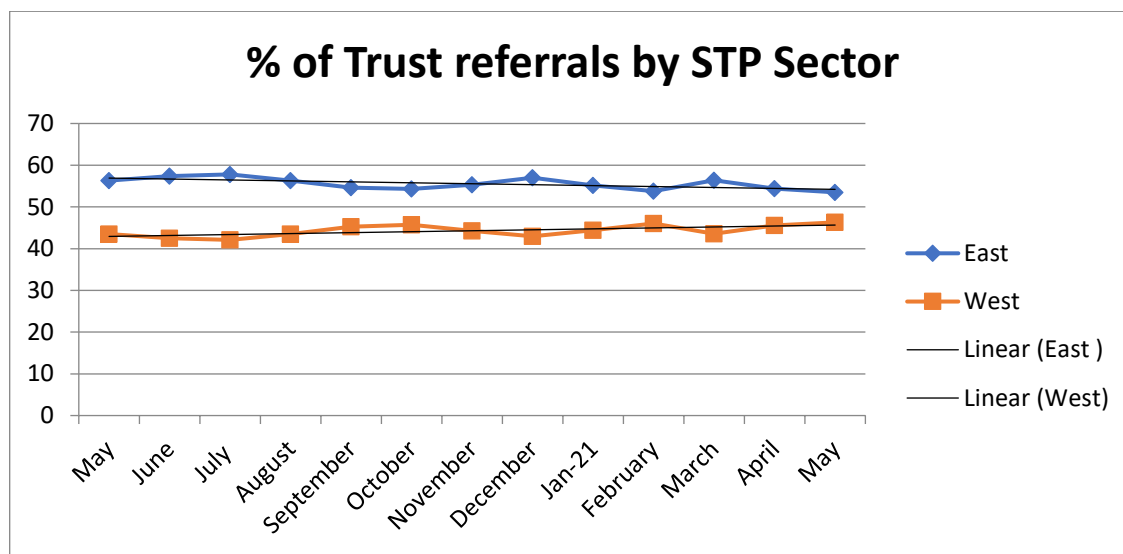
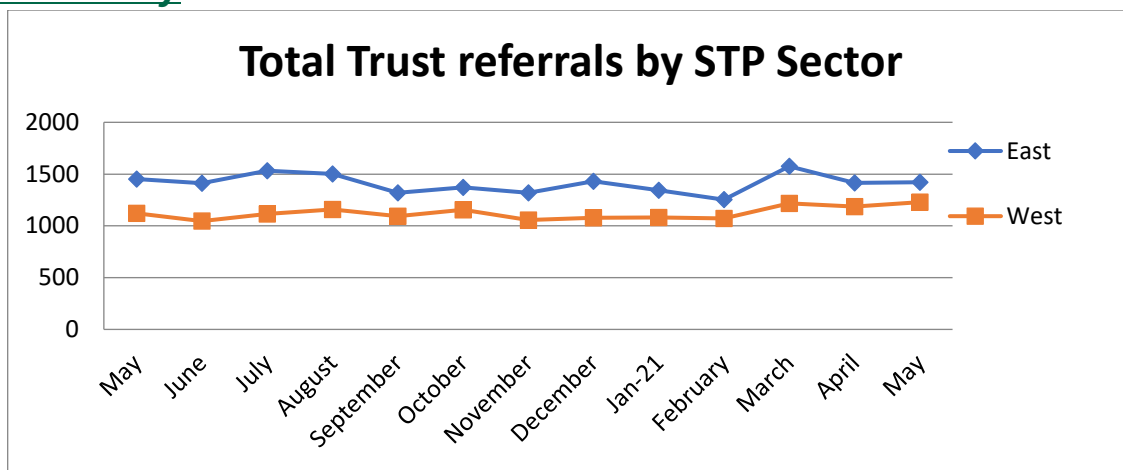
Essex Referrals



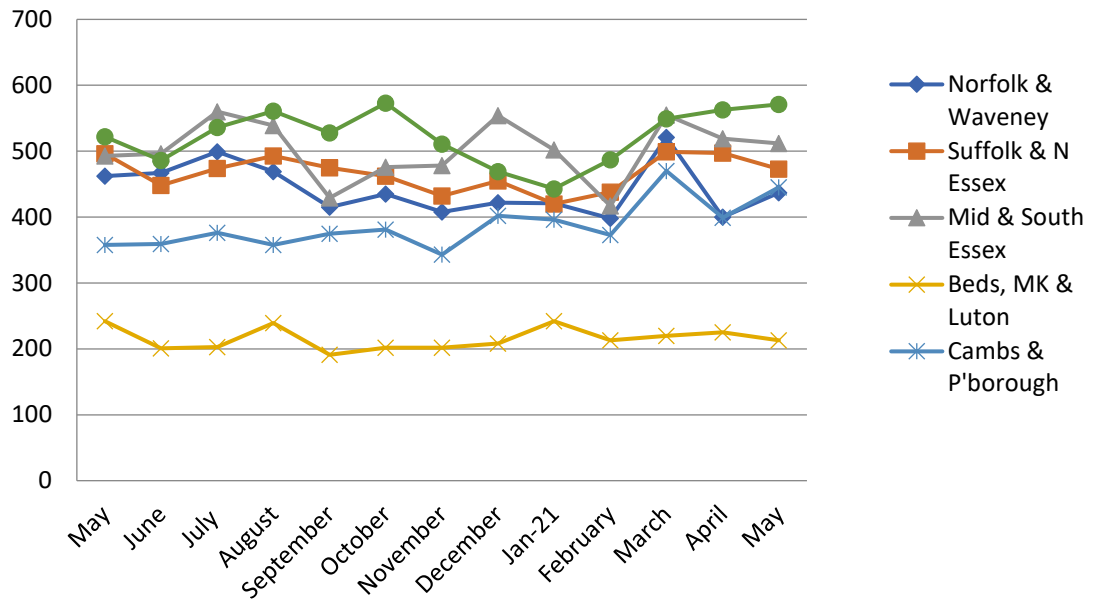
The Safeguarding team collate information on Private Ambulance Services, from the Base Station location provided on the referral. The accuracy of the information is subject to human error, due to inaccuracies with reporting referrer's base location.



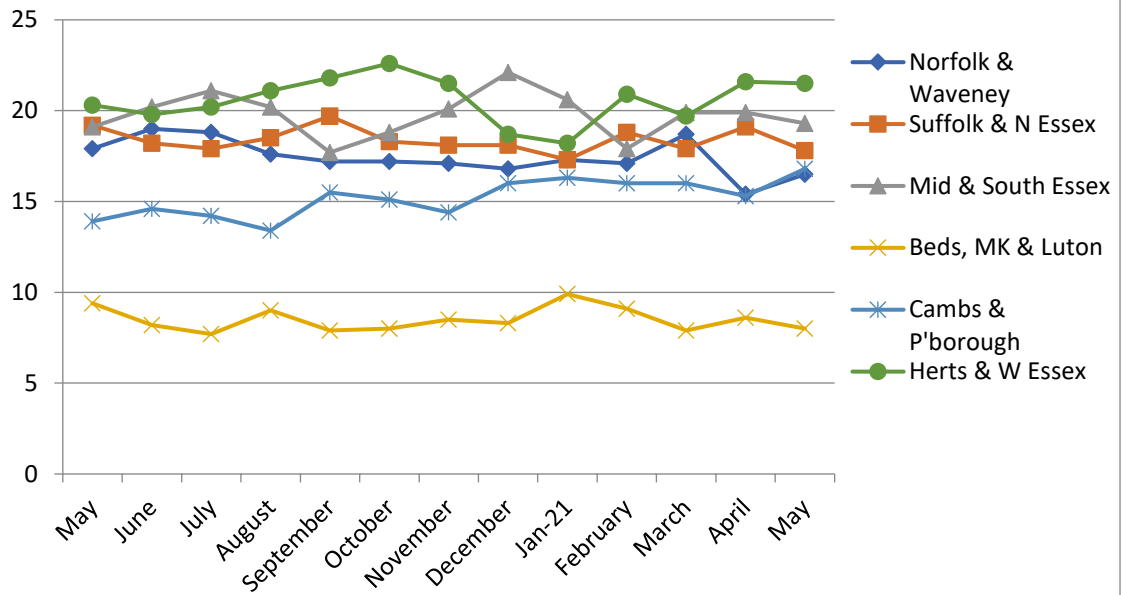
STP Locality



Total Trust referrals by STP Area

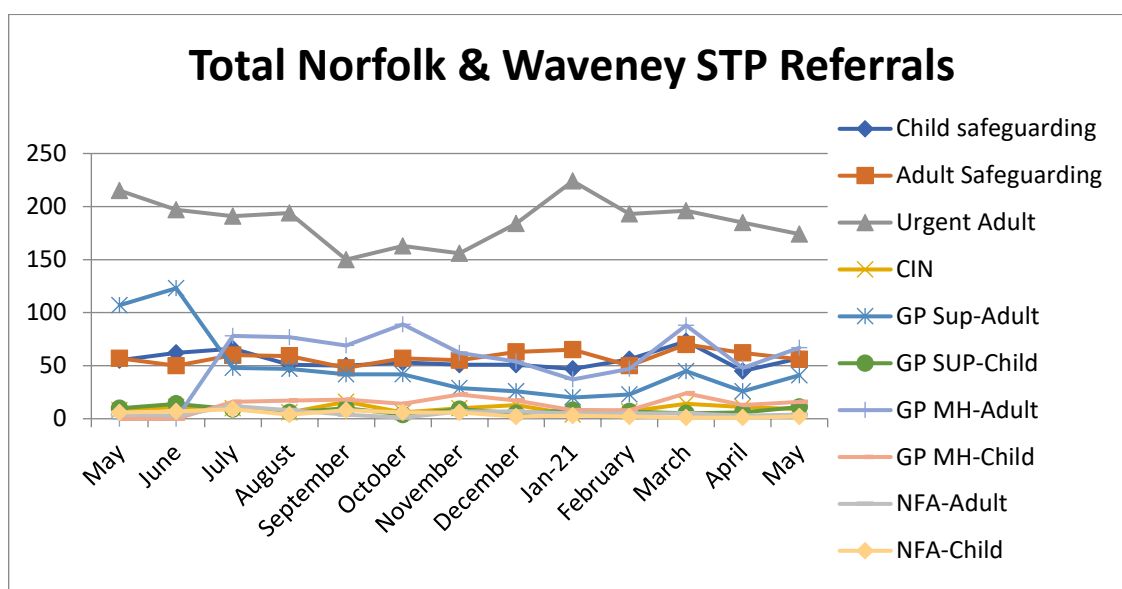


% of Trust referrals by STP Area

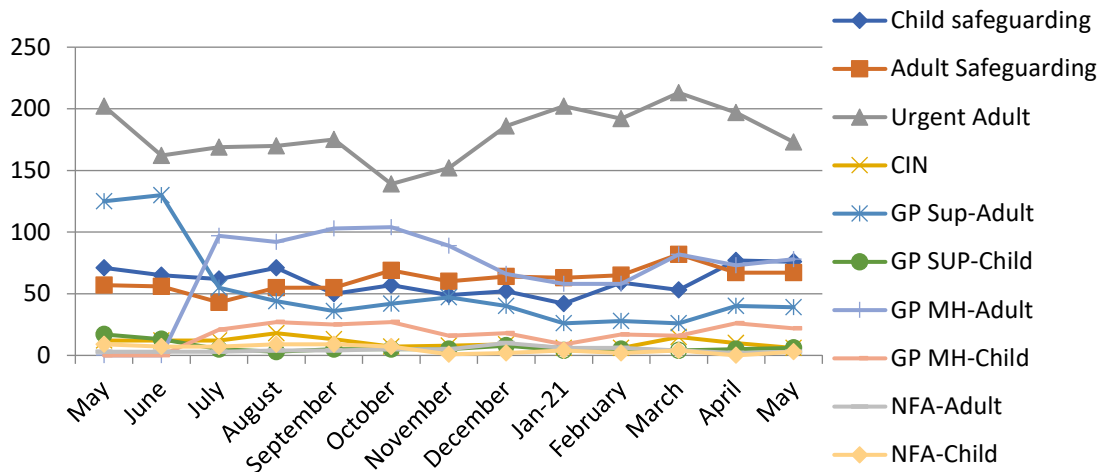


➤ The below table is a breakdown of referrals by STP area by Children & Adult.

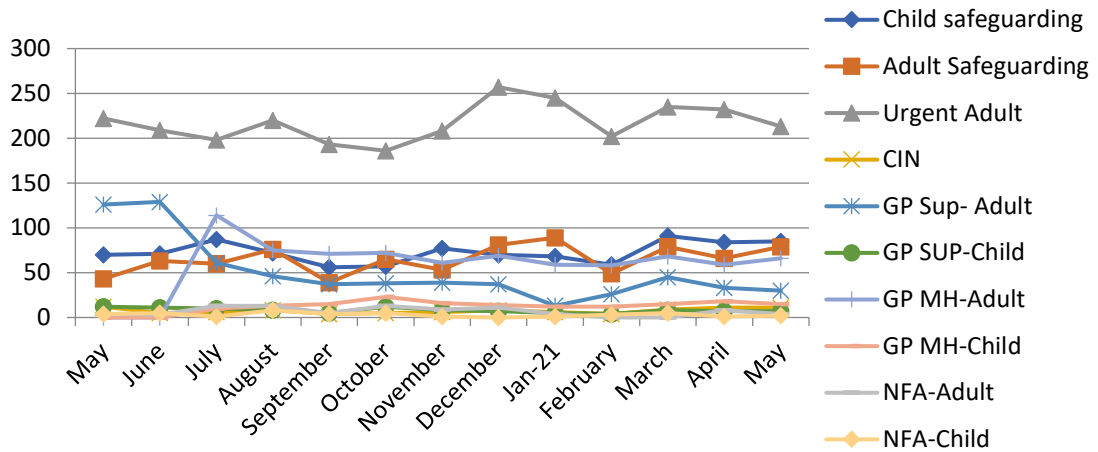
Month/Area Totals		May	Jun	Jul	Aug	Sep	Oct	Nov	Dec	Jan 21	Feb	Mar	Apr	May
EAST	Norfolk & Waveney	462	467	499	469	415	435	408	422	421	398	521	400	437
	Suffolk & North Essex	496	448	474	493	475	462	432	455	420	438	499	497	473
	Mid & South Essex	493	496	560	539	429	476	478	554	502	417	555	519	512
WEST	MK, Beds & Luton	242	201	203	239	191	202	202	208	242	213	220	225	213
	Cams & P 'Borough	358	359	376	358	375	381	343	402	396	373	447	399	445
	Herts & West Essex	522	486	536	561	528	573	511	469	443	487	549	563	571



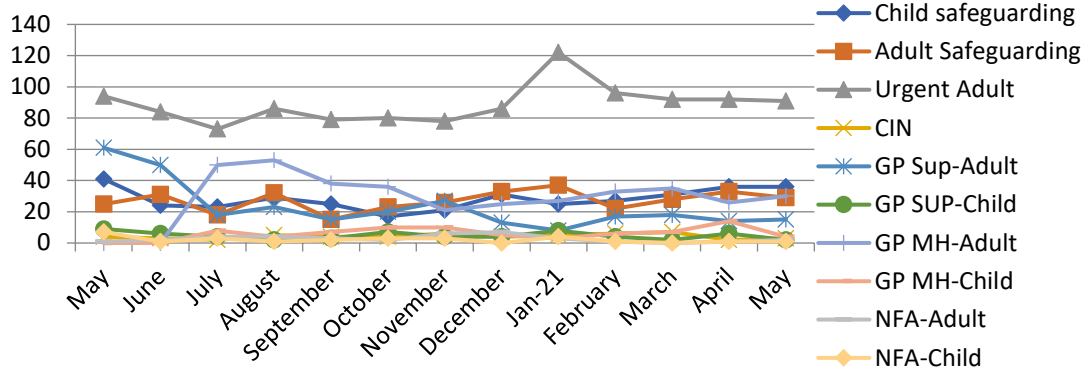
Total Suffolk & N Essex STP Referrals



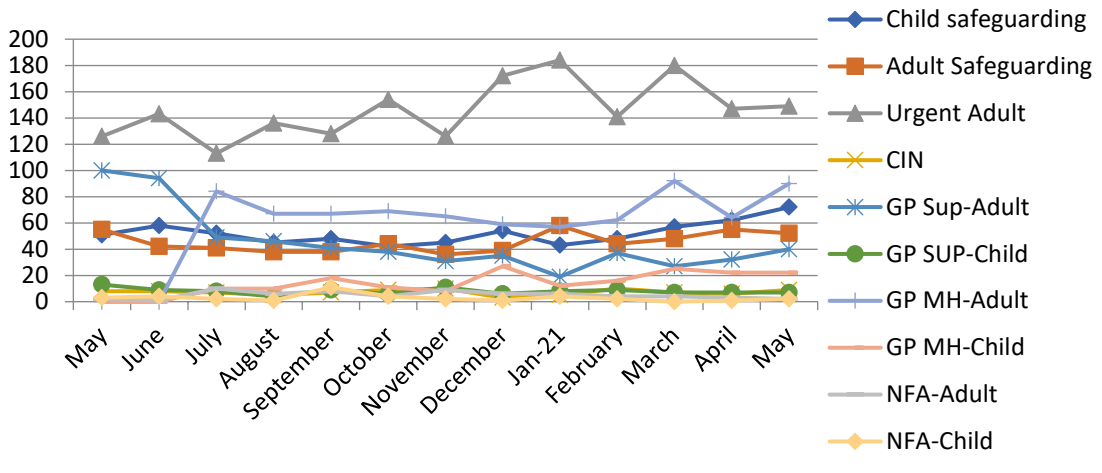
Total Mid & South Essex STP Referrals



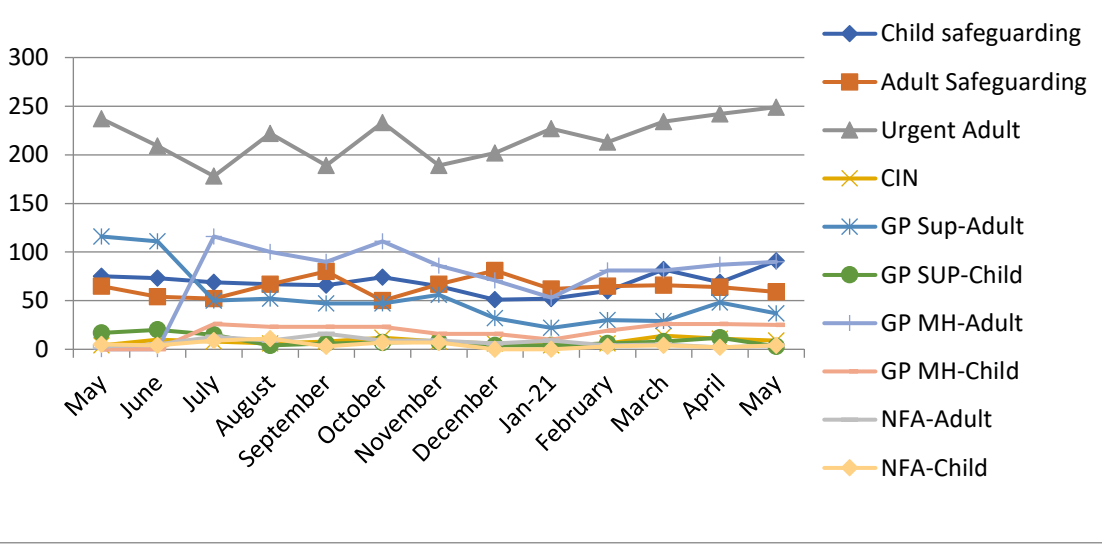
Total MK, Beds & Luton STP Referrals



Total Cambs & P'Borough STP Referrals

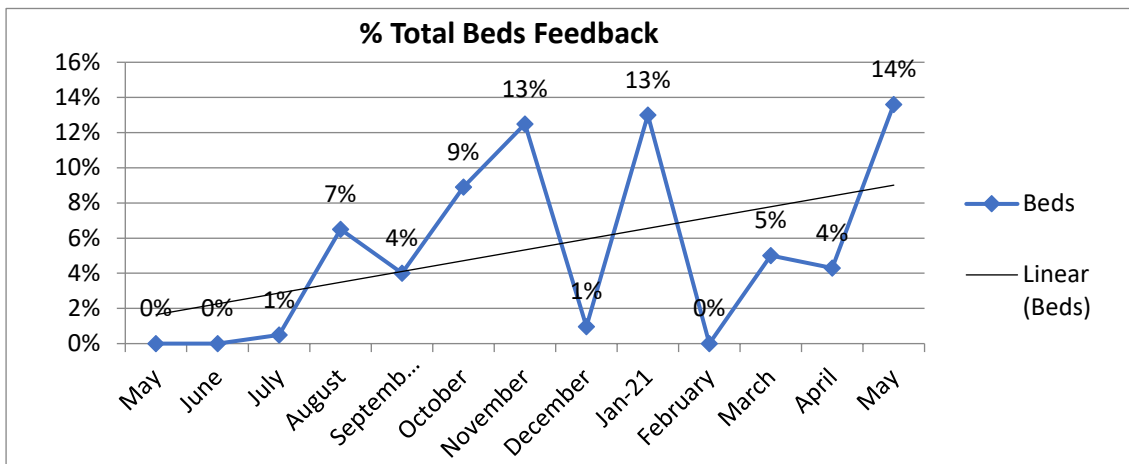


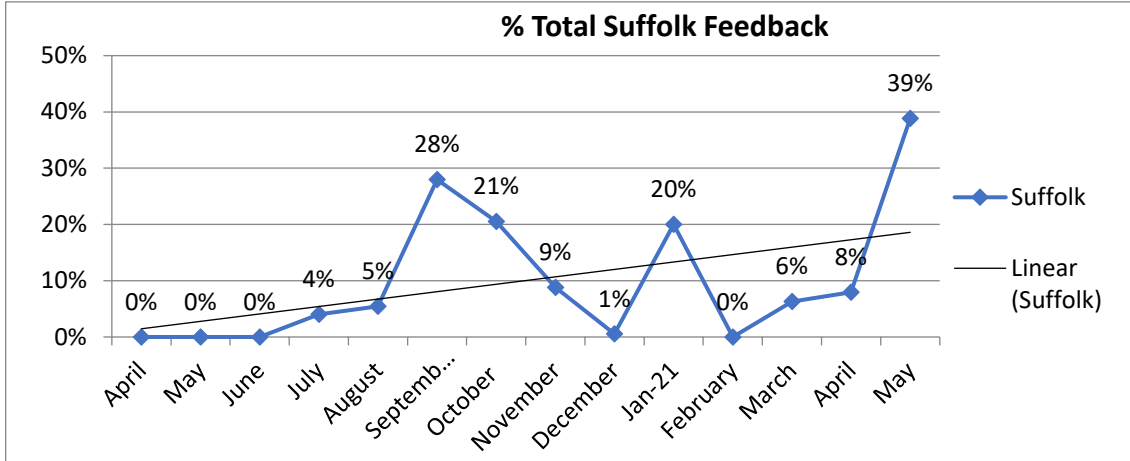
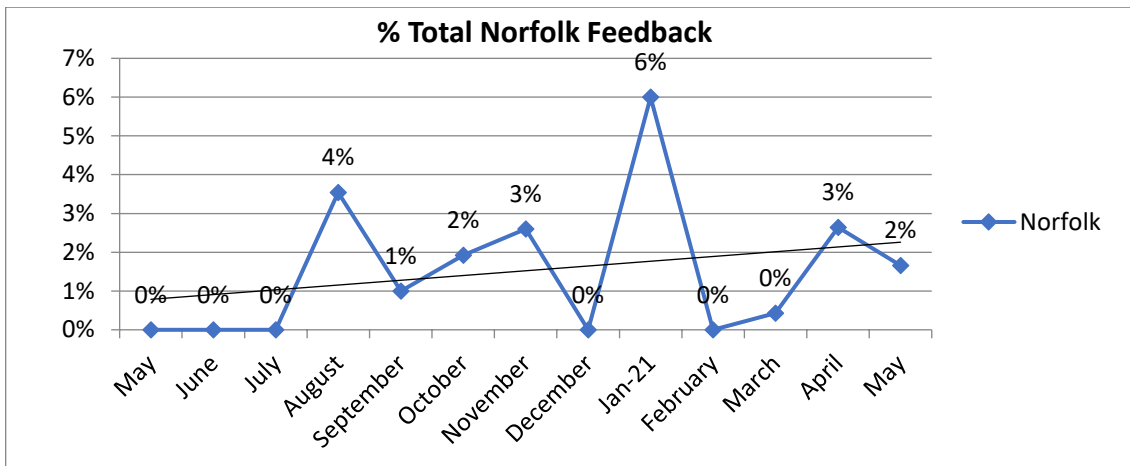
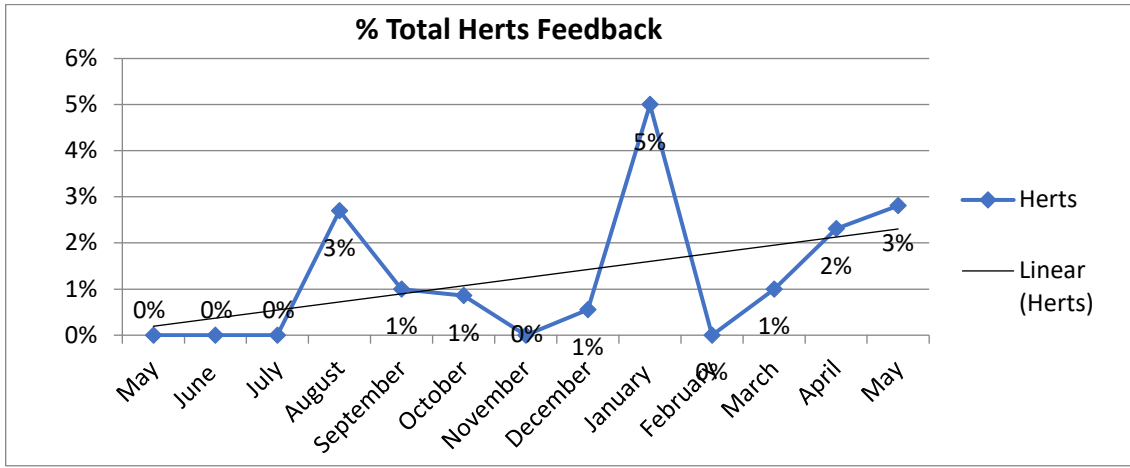
Total Herts & W Essex STP Referrals

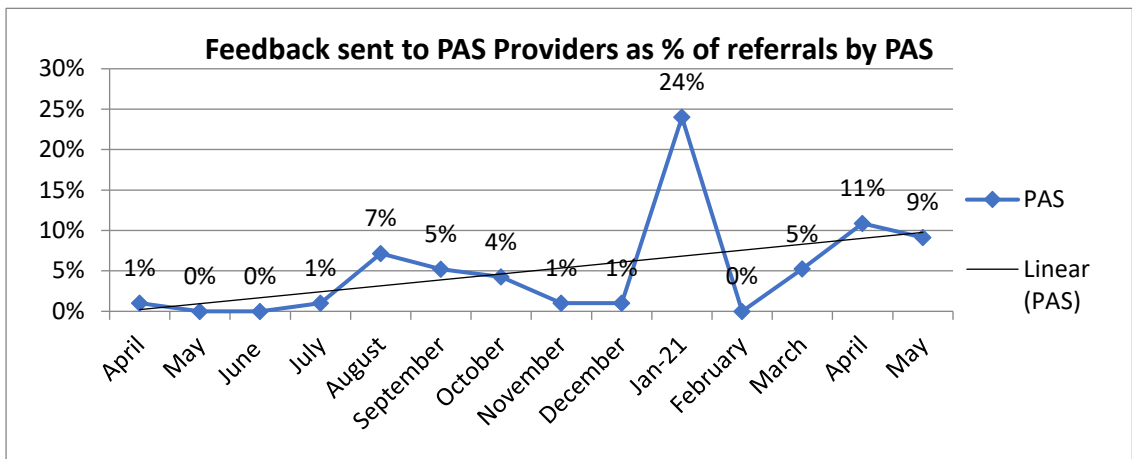
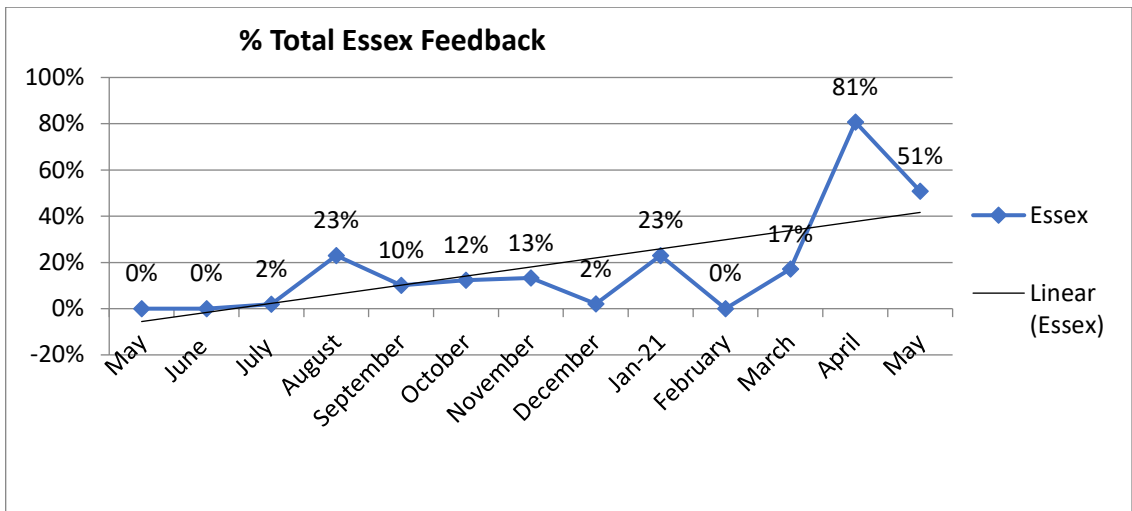
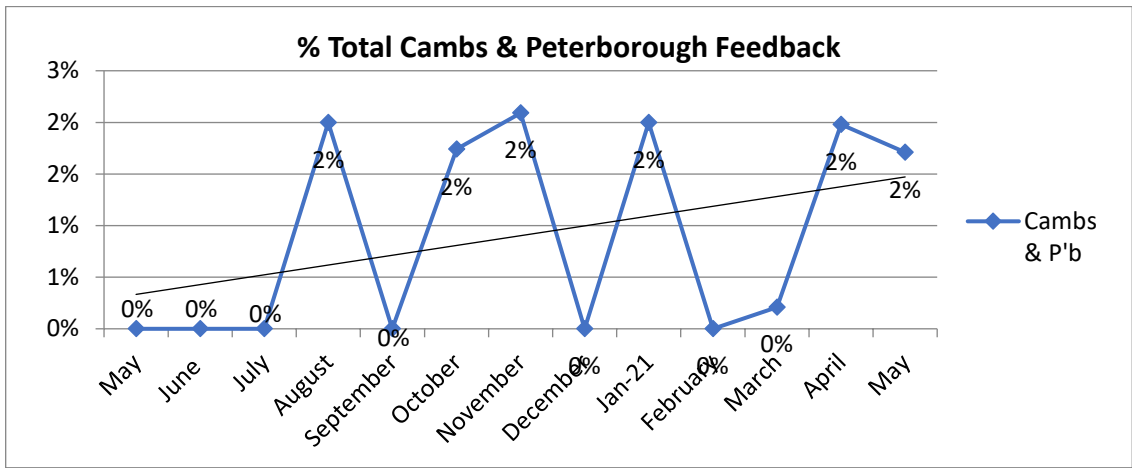


Feedback

- The below represents the amount of feedback sent out to staff/volunteers in Sector area from both GP and LA's.







Author: Emily Longden
 Date: June 2021